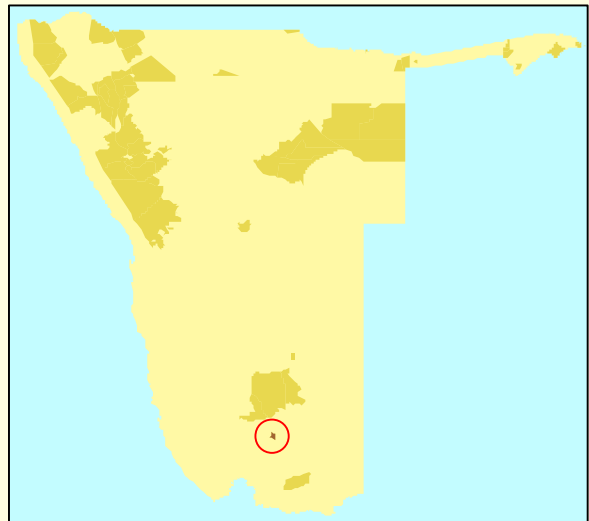
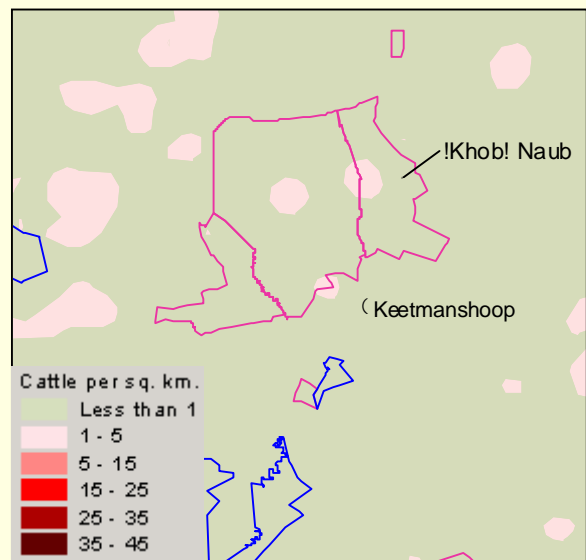
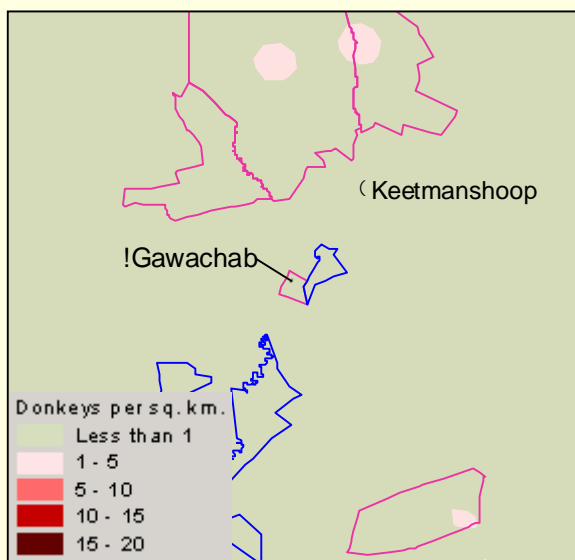
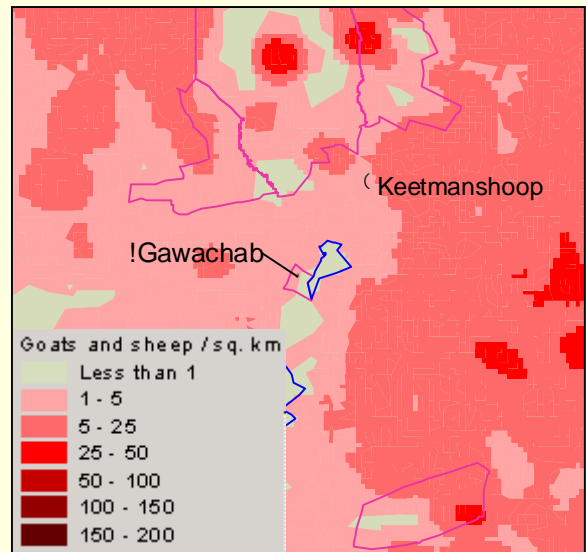
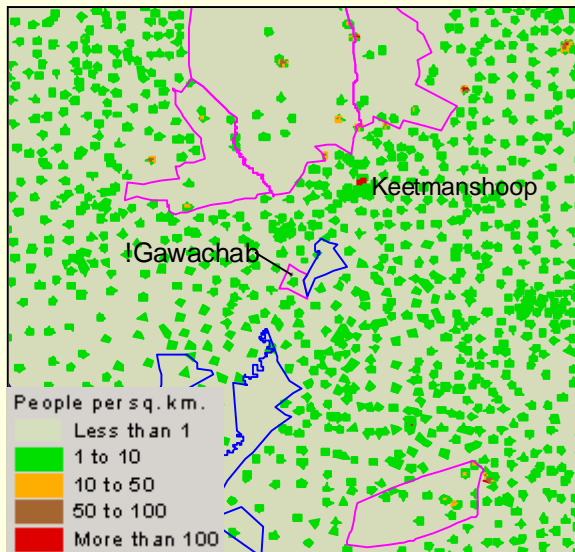


Name: **!Gawachab**
 Registered: September 2005
 Size: 132 km²
 Region: Karas
 Members¹: 158
 Annual rainfall: 100 to 150 mm
 Landscape: Nama-Karoo basin.
 Biome: Nama-Karoo.
 Vegetation type: Dwarf-shrub savanna.
 Key wildlife species: Kudu, springbok, steenbok.
 Terrestrial diversity: Low.
 Terrestrial endemism: Moderately low.



Non-wildlife population densities in and around !Gawachab conservancy.
 Conservancies are outlined in purple, State protected areas in blue.



¹ This figure refers to the number that was submitted with the original application for registration.