

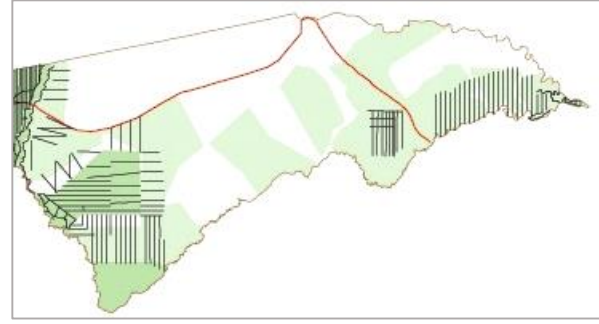
# GAME COUNTS IN EAST ZAMBEZI

## Dry season - Live sightings

Numbers seen:

Area	Balyerwa	Dzoti	Kwandu	Mashi	Mayuni	Salambala	Mudumu	Sikunga	Sobbe	Wuparo
Total km	78	88	78	79	70	215	294	61	103	28
No. of routes	12	12	10	8	6	16	22	6	10	3
Species										
Baboon							116			
Buffalo							1			
Bushbuck							3			
Bushpig										
Crocodile			2				2			
Duiker	1	4	5	5	5	9	28	2	4	3
Eland		12		80	15	8	43			
Elephant	24			23	19	2	951	372		
Giraffe				1	2	18	8	2		
Hippo			2				7			
Hyaena										
Impala	57	1		16	27	103	580	17		
Jackal BB						5				
Kudu	15	4	8	19		38	9	10	4	
Lechwe							11			
Leopard										
Lion										
Ostrich										
Reedbuck							13			
Roan	6	2		11			30	10	1	
Sable		2					114			
Steenbok		1		1			10		1	
Tsessebe							8			
V. Monkey							10			
Warthog	2	1				54	63	4		
Wild dog										
Wildebeest				2		2	29		2	
Zebra		69		23		916	104		11	

2015



### Habitat

### 2015 vs 2014

	Riverine zone with floodplain grassland	Woodland < 8km from the river	Woodland > 8km from the river	Eastern floodplain and grassland
Baboon	0	76	40	0
Buffalo	0	1	0	0
Bushbuck	0	0	3	0
Bushpig	0	0	0	0
Crocodile	3	1	0	0
Duiker	1	9	54	2
Eland	0	0	158	0
Elephant	19	253	842	277
Giraffe	0	0	18	13
Hippo	2	7	0	0
Hyaena	0	0	0	0
Impala	52	622	141	27
Jackal BB	1	0	0	4
Kudu	0	30	67	10
Lechwe	0	11	0	0
Leopard	0	0	0	0
Lion	0	0	0	0
Ostrich	0	0	0	0
Reedbuck	0	7	6	0
Roan	0	3	57	0
Sable	0	0	116	0
Steenbok	0	0	13	0
Tsessebe	0	0	8	0
V. Monkey	0	10	0	0
Warthog	4	19	87	14
Wild dog	0	0	0	0
Wildebeest	2	8	26	0
Zebra	420	23	184	496

Species	Animals		Groups	
	2014	2015	2014	2015
Baboon	198	116	10	5
Buffalo	93	1	2	1
Bushbuck	0	3	0	1
Bushpig	1	0	1	0
Crocodile	0	4	0	3
Duiker	74	66	66	61
Eland	33	158	2	9
Elephant	523	1391	43	55
Giraffe	22	31	9	12
Hippo	9	9	2	4
Hyaena	0	0	0	0
Impala	429	801	37	36
Jackal BB	3	5	3	3
Kudu	114	107	24	21
Lechwe	32	11	3	1
Leopard	0	0	0	0
Lion	1	0	1	0
Ostrich	0	0	0	0
Reedbuck	2	13	2	5
Roan	139	60	25	19
Sable	18	116	1	5
Steenbok	15	13	12	12
Tsessebe	0	8	0	1
V. Monkey	0	10	0	1
Warthog	129	124	51	40
Wild dog	0	0	0	0
Wildebeest	490	35	22	11
Zebra	2760	1123	30	36



### Estimates

Estimates were calculated using DISTANCE, for all species with sufficient sightings. These are **average** estimates as they are calculated using sightings from the 3 most recent count years. Some conservancies have been grouped due to the low numbers of animals recorded. The bottom row of the table (hyphenated) numbers = 95% Confidence Intervals.

Species	Kwandu Mayuni Mashi Sobbe	Mudumu	Balyerwa Dzoti Wuparo	Salambala	Sikunga
Buffalo	0	*	0	0	0
Duiker	860	900	172	324	*
Elephant	600-1030	630-1290	108-272	180-500	*
Giraffe	*	2830-7640	133-769	*	*
Impala	*	7300	*	1150	*
Kudu	92	340	*	133	*
Lechwe	0	*	0	0	0
Reedbuck	0	*	0	0	0
Roan	*	460	62	0	0
Sable	0	*	*	0	0
Steenbok	*	270	*	0	0
Tsessebe	0	*	0	0	0
Warthog	0	1500	99	742	*
Wildebeest	*	760	0	*	*
Zebra	*	2495	*	1875	0

\* = too few observations to provide useful local estimates of numbers  
0 = no animals seen in counts

### Trends: Bars = numbers per 100km; lines = patrol sighting index

