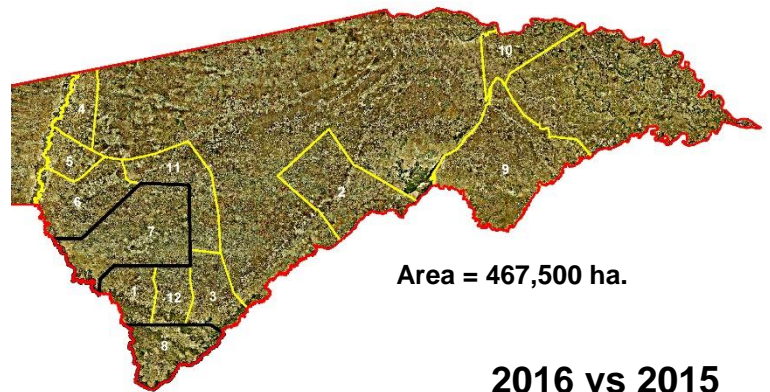


# GAME COUNTS IN EAST ZAMBEZI

## Dry season - Live sightings

### 2016



Area = 467,500 ha.

### Numbers seen:

Area	1 Balyerwa	2 Bamunu	3 Dzoti	4 Kwandu	5 Mashhi	6 Mayuni	7 Mudumu	8 Nkasa Rupara	9 Salambala	10 Sikunga	11 Sobbe	12 Wuparo
Total km	86	98	110	94	85	77	313	92	216	59	100	47
No. of routes	12	9	12	11	9	6	23	*3	16	6	10	5
Species												
Baboon			44				6	78				
Buffalo		58					351	3				
Bushbuck								2				
Bushpig		12										
Crocodile												
Duiker		5	12	7	13	1	33	2	2	1	10	2
Eland			121		7	35	3		20	2		
Elephant	122		10		28		257	136	57	50		
Giraffe							28	12	1			
Hippo						10	19	19				
Hyaena							1					
Impala			15		3	10	241	860	173			
Jackal BB					2		1	4				
Kudu	6		3	5	11	7	47	47	28	17	1	
Lechwe						7	1	47				
Leopard												
Lion												
Ostrich												
Reedbuck		6				1	10	16				
Roan	3		10		9		43				1	2
Sable							12					
Steenbok							3					
Tsessebe	1		1				1					
V. Monkey							1					
Warthog		18	3		7		19	225	37			
Wild dog												
Wildebeest	18						108	176	40			
Zebra		625	50		60		64	11	338			

In 2016 two additional areas were counted: Bamunu and Nkasa Rupara. It is important to bear this in mind when interpreting tables, charts and past posters.

### Habitat

	Riverine zone with floodplain grassland	Woodland < 8km from the river	Woodland > 8km from the river	Eastern floodplain and grassland
Baboon	128	0	0	0
Buffalo	314	90	8	0
Bushbuck	2	0	0	0
Bushpig	0	12	0	0
Crocodile	0	0	0	0
Duiker	6	8	72	2
Eland	0	8	180	0
Elephant	149	44	410	57
Giraffe	0	7	24	10
Hippo	33	15	0	0
Hyaena	0	0	1	0
Impala	859	247	139	57
Jackal BB	0	0	3	4
Kudu	54	46	55	17
Lechwe	54	1	0	0
Leopard	0	0	0	0
Lion	0	0	0	0
Ostrich	0	0	0	0
Reedbuck	18	6	9	0
Roan	0	3	65	0
Sable	7	1	4	0
Steenbok	0	0	3	0
Tsessebe	2	0	1	0
V. Monkey	0	0	1	0
Warthog	222	19	63	5
Wild dog	0	0	0	0
Wildebeest	18	35	187	102
Zebra	277	404	395	72

### 2016 vs 2015

Species	Animals		Groups	
	2015	2016	2015	2016
Baboon	116	128	5	5
Buffalo	1	412	1	6
Bushbuck	3	2	1	1
Bushpig	0	12	0	1
Crocodile	4	0	3	0
Duiker	66	88	61	71
Eland	158	188	9	11
Elephant	1391	660	55	53
Giraffe	31	41	12	14
Hippo	9	48	4	8
Hyaena	0	1	0	1
Impala	801	1302	36	74
Jackal BB	5	7	3	5
Kudu	107	172	21	32
Lechwe	11	55	1	6
Leopard	0	0	0	0
Lion	0	0	0	0
Ostrich	0	0	0	0
Reedbuck	13	33	5	15
Roan	60	68	19	16
Sable	116	12	5	6
Steenbok	13	3	12	3
Tsessebe	8	3	1	3
V. Monkey	10	1	1	1
Warthog	124	309	40	85
Wild dog	0	0	0	0
Wildebeest	35	342	11	14
Zebra	1123	1148	36	35

\*Due to excessive overlap with other routes, route 3 was discarded.



### Estimates

Estimates were calculated using DISTANCE. These are average estimates as they are calculated using sightings from the 3 most recent count years. In most cases conservancies have been grouped due to the low numbers of animals recorded. The bottom row of the table (hyphenated) numbers = 95% Confidence Intervals (rounded).

No estimates are given for Bamunu and Nkasa Rupara as these areas were counted for the first time in 2016 and more data are required to provide reliable species detection curves. In Sikunga, very few sightings have ever been recorded (38 for all species since 2011) and no sensible estimates can be derived for this area.

Species	Kwandu Mayuni Mashhi Sobbe	Mudumu	Balyerwa Dzoti Wuparo	Salambala
Buffalo	0	*	0	0
Duiker	818	1109	212	258
Elephant	195	4574	291	*
Giraffe	0	95	0	*
Impala	*	6015	*	212
Kudu	222	517	103	243
Lechwe	*	*	0	0
Reedbuck	*	*	0	0
Roan	*	653	50	0
Sable	0	58	0	0
Steenbok	0	300	0	0
Tsessebe	0	*	*	0
Warthog	*	1302	52	999
Wildebeest	0	679	*	*
Zebra	*	1279	319	350

\* = too few observations to provide useful local estimates of numbers  
0 = no animals seen in counts

### Trends: Bars = numbers per 100km; lines = patrol sighting index (conservancies only)

