

maximising wildlife returns by minimising threats...

Performance Indicators

Management performance in 2020		
Category	Performance	
1 Adequate staffing		
2 Adequate expenditure		
3 Audit attendance		
4 NR management plan		
5 Zonation		
6 Leadership		
7 Display of material		
8 Event Book modules		
9 Event Book quality		
10 Compliance		
11 Game census		
12 Reporting & adaptive management		
13 Law enforcement		
14 Human Wildlife Conflict		
15 Harvesting management		
16 Sources of NR income		
17 Benefits produced		
18 Resource trends		
19 Resource targets		

Key to performance indicators

weak/bad

reasonable

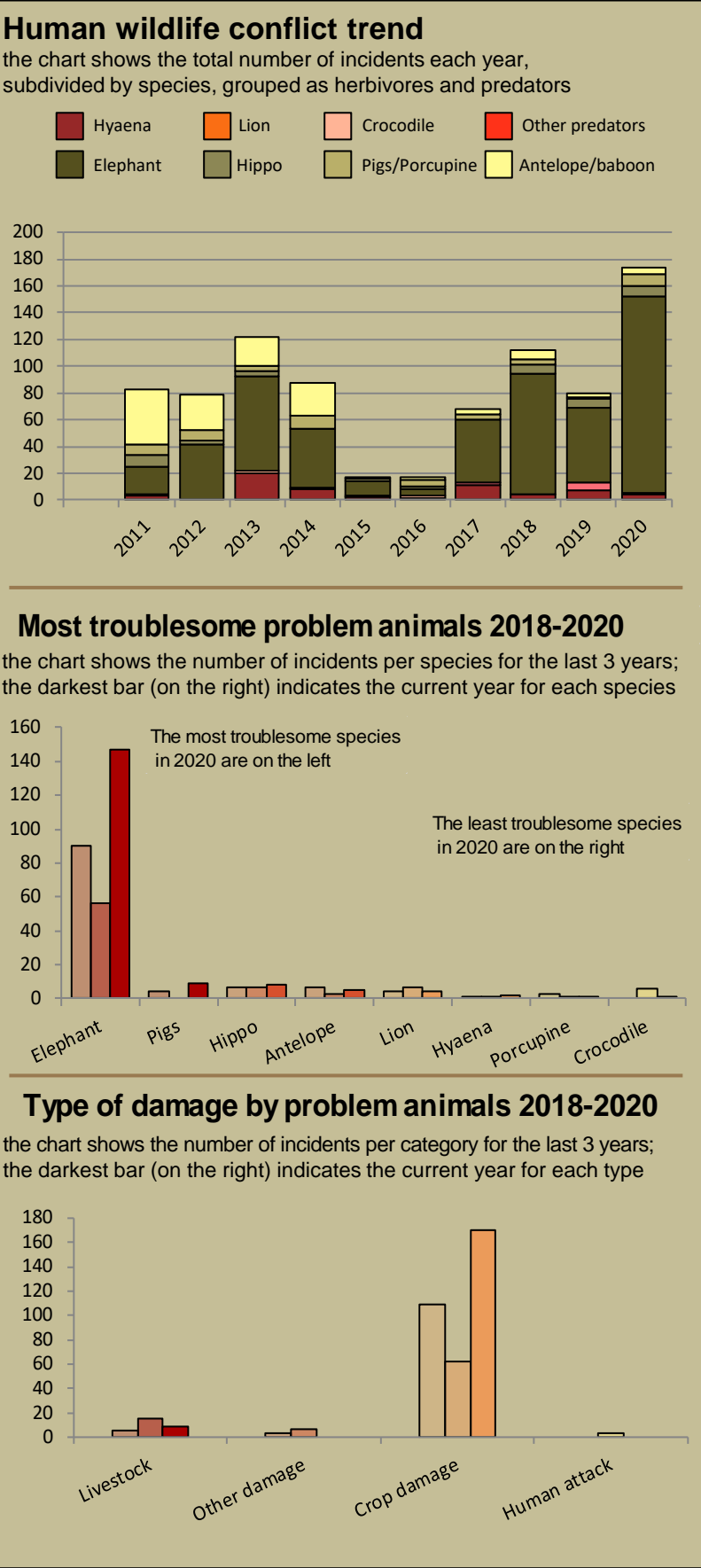
good

Performance is assessed on a scoring system from zero (none) to a maximum of between 3 and 6 (strong/excellent) depending on the indicator.

Indicators 1-17 reflect the performance of the management team in place in the conservancy and an efficient team can achieve a good rating in all 17 indicators.

Indicators 18 & 19 are influenced by external factors and are not considered a reflection of conservancy management. They indicate the current status of wildlife in the conservancy in relation to a theoretical optimal situation.

Human wildlife conflict



Poaching



Wildlife removals – quota use and value

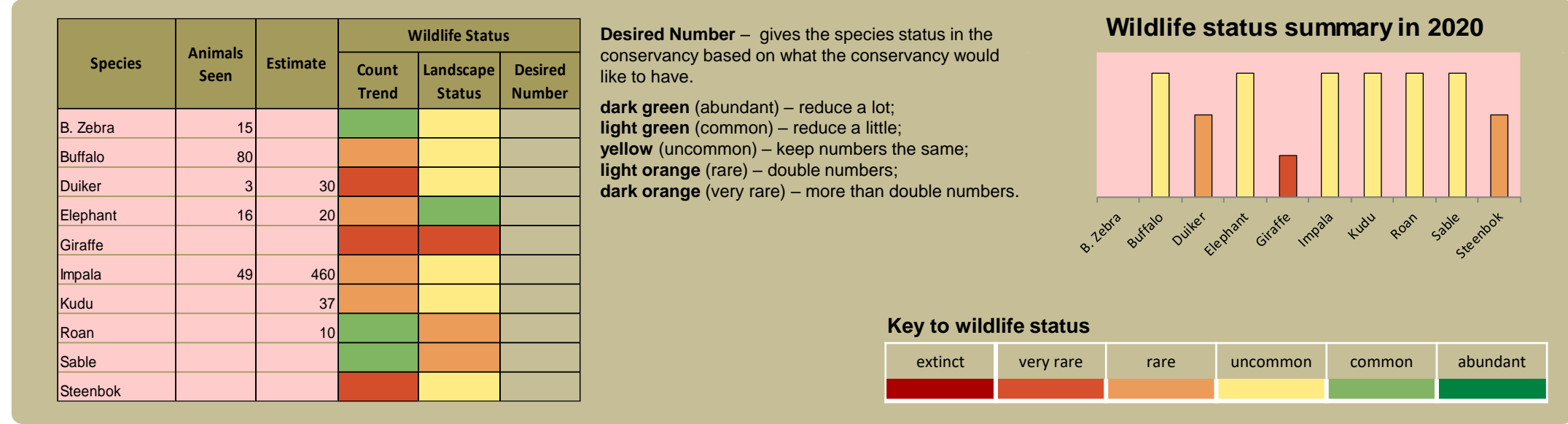
Potential value estimates (N\$) for a single animal:	Species	Quota 2020			Animals actually used in 2020						Potential	
		Total	Trophy	Other Use	Trophy	Own Use & Premium	Shoot & Sell	Capture & Sale	Problem Animal	Total Use	Trophy Value N\$	Other use Value N\$
<p>• Potential trophy value - the average trophy value for that species in the conservancy landscape</p> <p>trophy values vary depending on trophy quality, international recognition of the hunting operator and the hunting area</p> <p>• Potential other use value - the average meat value for common species</p> <p>or</p> <p>the average live sale value of each high value species (indicated with an *). High value species are never used for meat</p> <p>Fractions of animals indicate that a quota of 1 animal was awarded with conditions i.e.</p> <p>a) over a period of several years and/or</p> <p>b) is shared with other conservancies</p>	Baboon	5	5								400	
	Buffalo	14	10	4	5	1				7	79,200	7,425
	Crocodile	2	1	1							29,300	
	Duiker	6		6		1				1		189
	Elephant*	6	3	3							220,800	90,000
	Hippo	4	2	2	1					1	35,500	7,425
	Impala	10	4	6		4				4	2,700	918
	Kudu	3	2	1							5,900	3,483
	Lechwe	1	1								20,900	
	Reedbuck	1	1								7,700	
	Roan*	1	1								61,700	62,250
	Sable*	0.33	0								61,900	40,945
	Warthog	6	3	3		2				2	2,300	540
	Waterbuck *	2	2									7,400
	Blue wildebeest*	2	2								4,300	4,070
	B. Zebra	5	5								5,100	

Effective monitoring is key to understanding the status of wildlife in the conservancy and for the effective management of these resources.

Conservancies reduce environmental costs while increasing environmental returns. Returns from wildlife can far outweigh human wildlife conflict costs.

monitoring numbers and trends for a healthy conservancy...

Current wildlife numbers and status



Fixed route patrols

charts show the number of sightings of each species per fixed route foot patrol each year. Status flags reflect the general sightings trend over the last 5 years

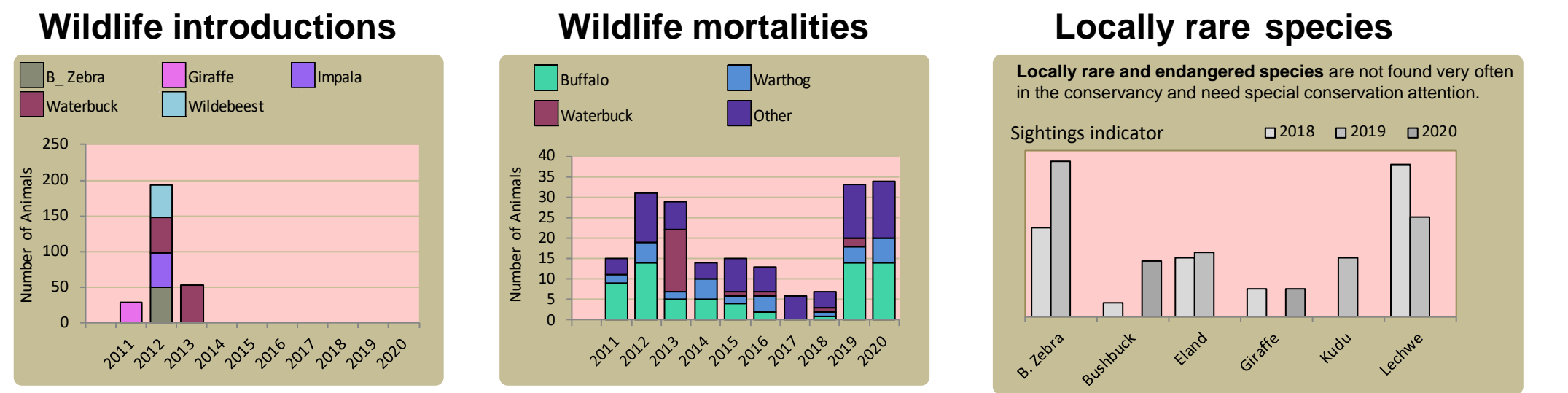
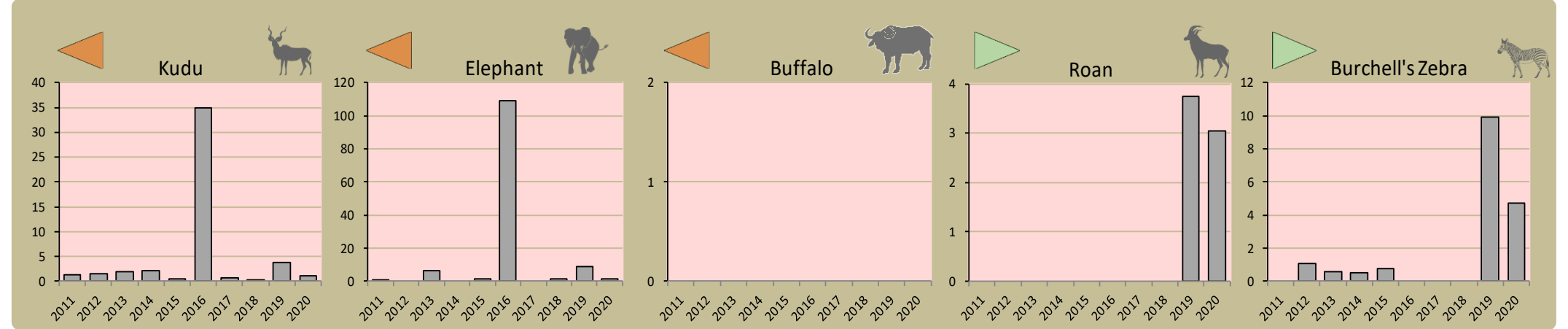
Flags

decreasing

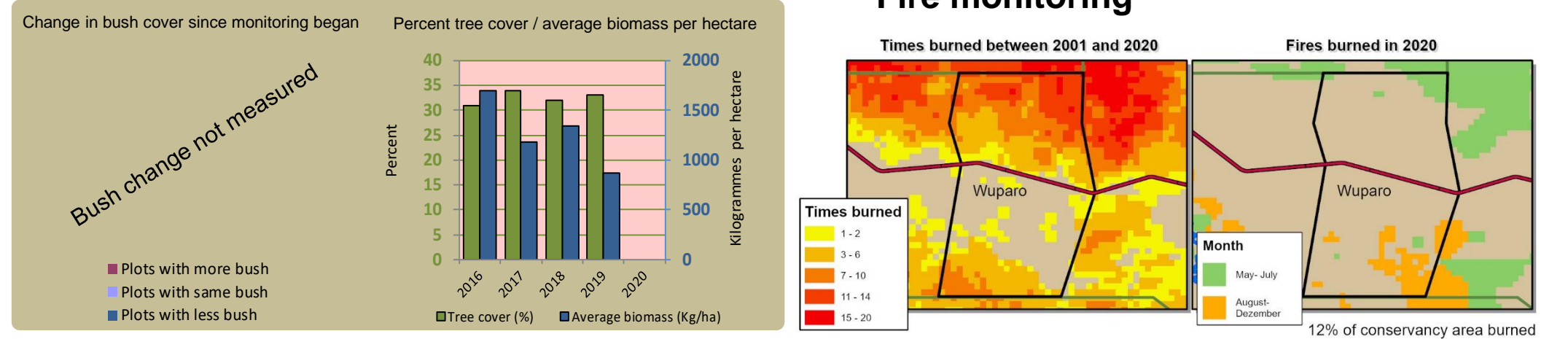
No change

No change, rarely recorded

Increasing

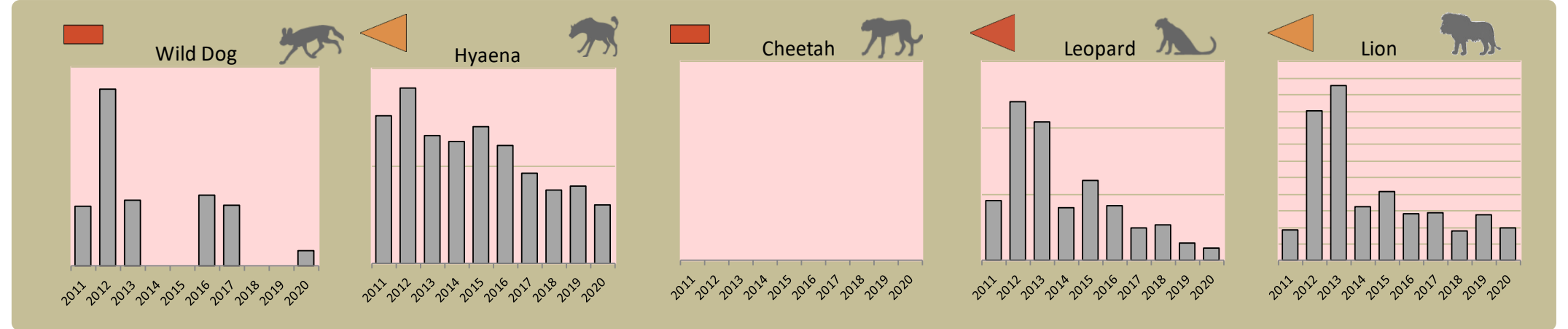


Vegetation monitoring



Predator monitoring

charts show the average number of animals seen per Event Book each year
Status flags reflect the general sightings trend over the last 5 years



Wildlife provides a wide range of benefits. Some wildlife can cause conflicts, but all wildlife is of value to tourism, trophy hunting and a healthy environment.

By using all the available information and adapting and improving activities, threats such as human wildlife conflict, poaching and other issues can be minimised.

Enabling wise conservancy governance...

Conservancy Statistics

Date Registered:	December 1999
Population (2011 census):	1140
Size (square kilometres):	148
Registered members:	1002

Key Compliance Requirements

Was an AGM held?	✓
Were elections held?	✓
Were benefits distributed according to the BDP?	✓
Is game managed according to the GMUP?	✓
Was the financial report presented and approved?	✓

Conservancy Governance

	Male	Female	Total
Number of management committee members	5	3	8
Attendance at AGM	86	39	125
Date of the last AGM:	10/12/2020		
Date of the next AGM:	Dec-21		
Other important issues			
Budget approved?	✓		
Work plan approved?	✓		
Annual conservancy report approved?	✓		

Benefit Distribution

Type	Description	Beneficiary	Number
Social Benefits	Funeral Assistance	Households	8
Meat Distribution	Meat To Members		
Other Benefits	Hwc Offsets	People	74
	Ta Benefits	People	11

Employment

	Male	Female	Total
Conservancy staff (Incl. CGG & CRM)	22	10	32
Number of Community Game Guards	9	4	13
Number of Community Resource Monitors			

Governance Performance Rating

How well did the conservancy perform in the past year?

Performance Category	This Year	Prev. Year	Explanation of performance category
1 Member engagement			The conservancy is adequately engaging its members
2a Benefit planning			The conservancy developed its BDP in a transparent and participatory manner
2b Benefit distribution			The conservancy distributes benefits to its members in a fair, transparent and equitable manner
3 Accountability			Conservancy members are holding the management committee accountable
4 Compliance			The conservancy is compliant with the standard operating proceedings (SOPs)
5 Stakeholder engagement			The conservancy maintains relationships with key external stakeholders
6 Financial management			The conservancy is effectively managing its finances
Colour codes: <div>none</div> <div>weak</div> <div>moderate</div> <div>strong</div> <div>exceptional</div> <div>N/A</div>			