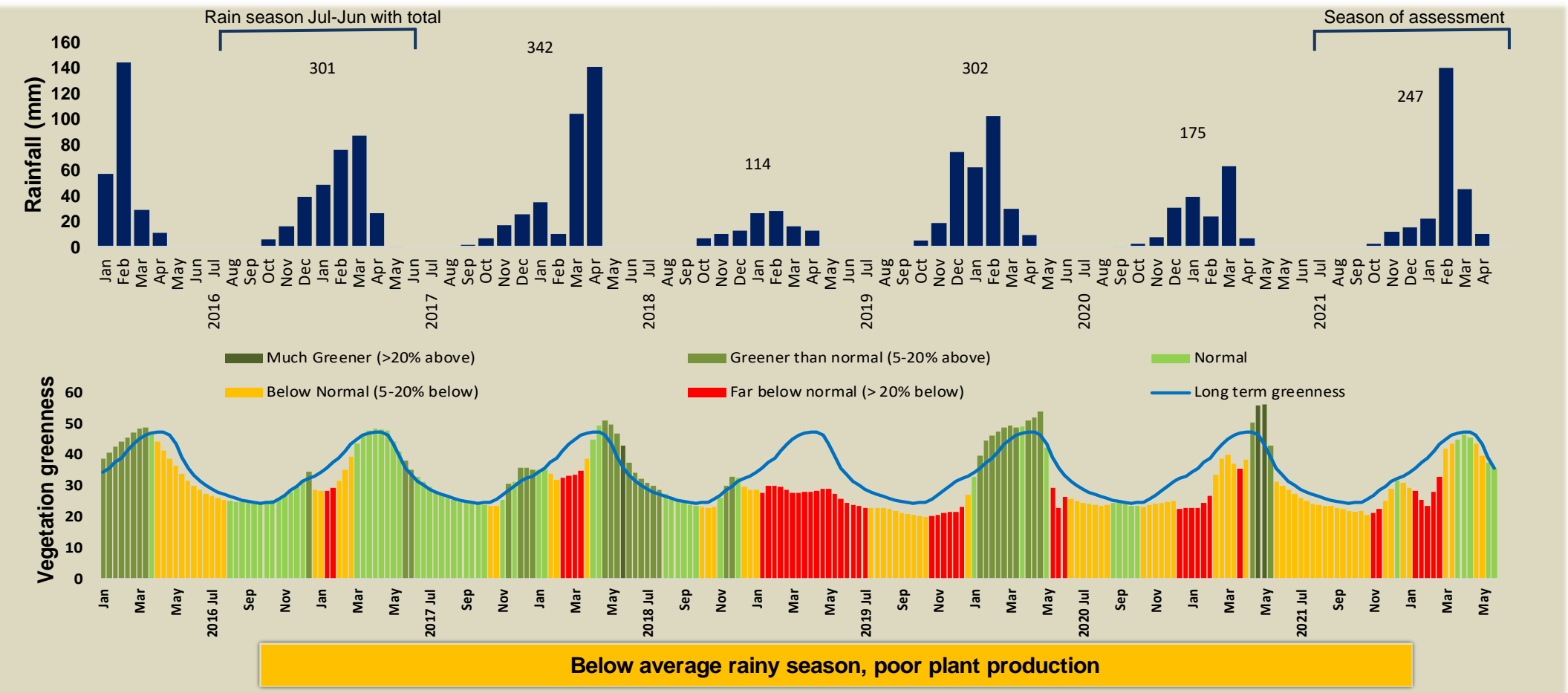


Uukolonkadhi Ruacana Climate and Vegetation Report



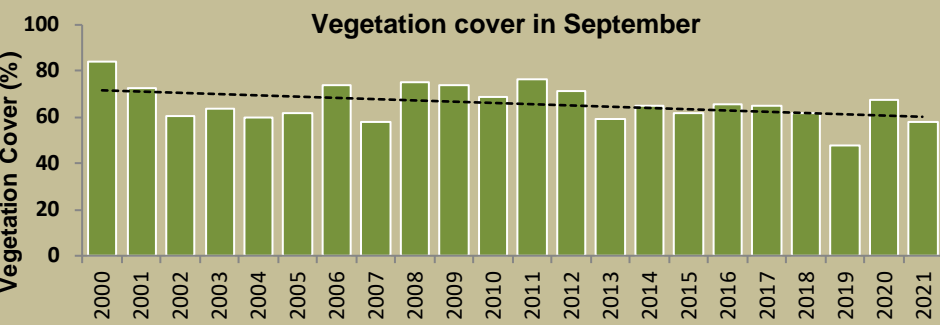
Adapting in response to the current environmental conditions ...

Seasonal trends in rainfall and vegetation (2021 / 2022 Season)



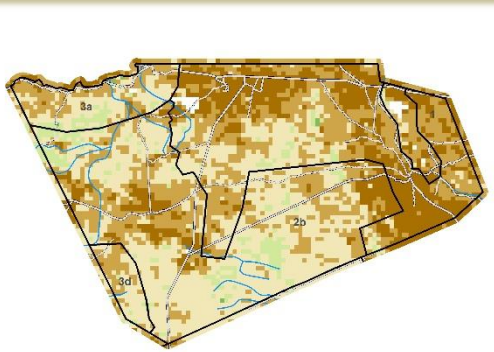
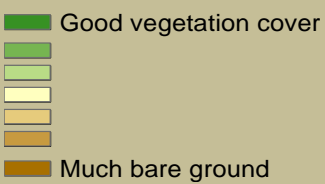
Vegetation cover trend (2000 - 2021)

High vegetation cover is good because more rainwater is prevented from running off, causing less erosion. Also the soil is shaded leading to a decrease in soil temperature and evaporation.



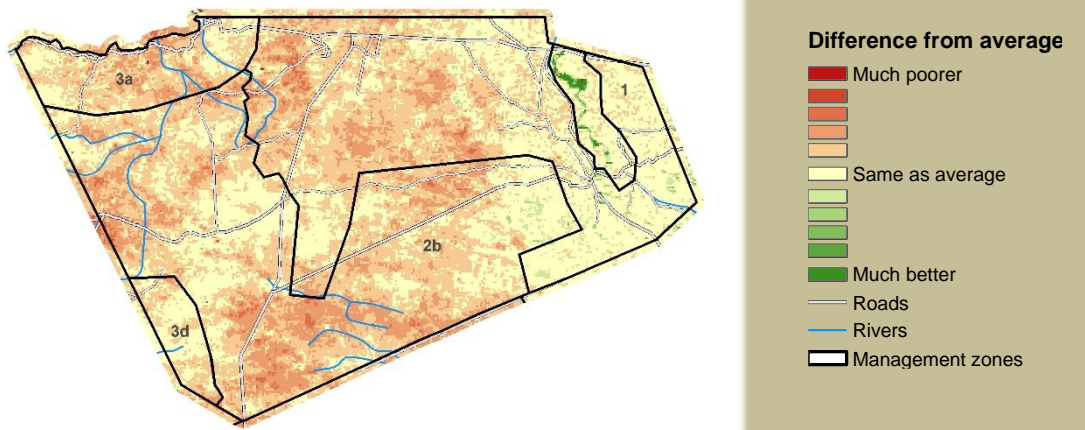
Plant cover is decreasing - Why?

Vegetation cover : 2021



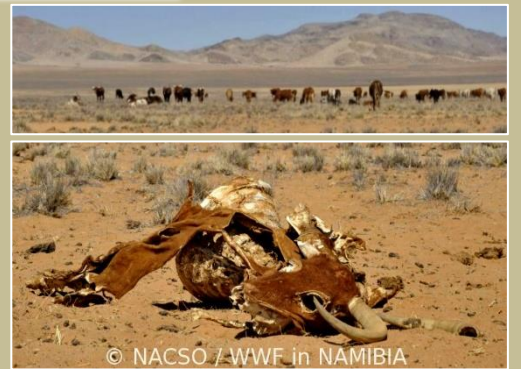
Vegetation productivity (February to April) 2022

Growing season



Zones

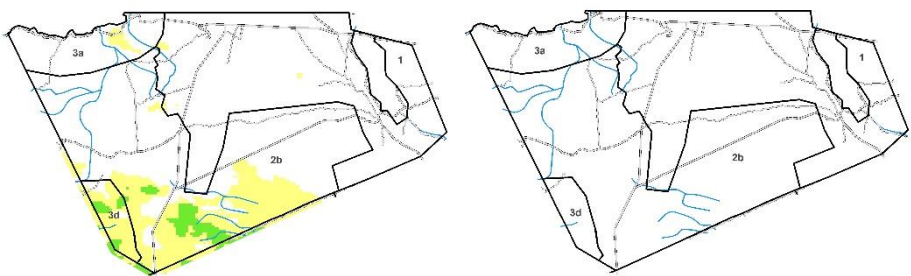
- 1) Settlement & Cropping Area
- 2a) Multiple Use: Livestock Priority
- 2b) Multiple Use: Hunting Priority
- 2c) Multiple Use: Tourism Priority
- 2d) Multiple Use: Mining Priority
- 3a) Exclusive Wildlife: All Utilisation
- 3b) Exclusive Wildlife: Trophy Hunting
- 3c) Exclusive Wildlife: Tourism
- 3d) Exclusive Wildlife: No Disturbance
- 4) Forest



Fire management

Burns between 2000 and 2021

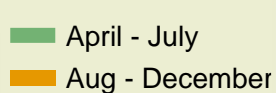
When and where it burnt in 2021



Times burned



Burned area



Apr-Jul: 0.4 sq.km, 0 %

Aug-Dec: sq.km, %

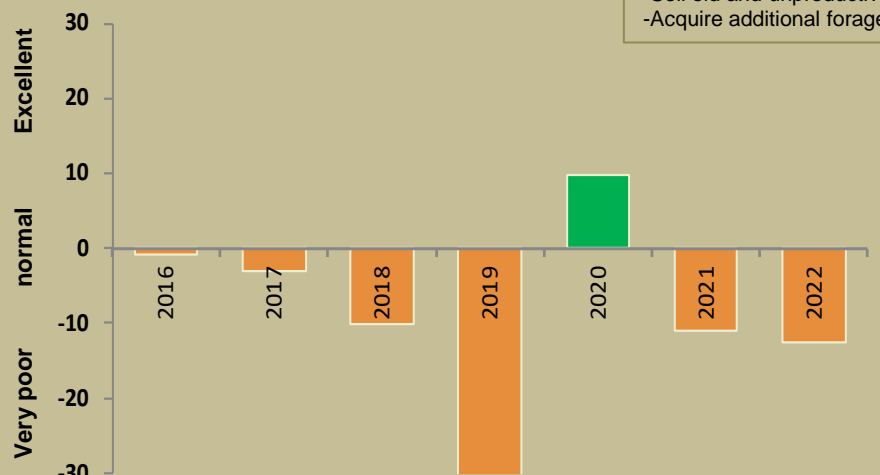
Prevent late burns next season

Forage availability

During the growing season enough forage must be produced to sustain livestock and game until the next rainy season

Management Options

- Do nothing
- Buy more animals
- Move animals to better grazing
- Sell old and unproductive animals
- Acquire additional forage



Below normal forage availability - Enough for livestock and game?



Climate and vegetation patterns assist in our understanding of the status of wildlife and livestock in the conservancy for the effective management of these resources.