

maximising wildlife returns by minimising threats...

Performance Indicators

Management performance in 2020			
Category	Performance		
1 Adequate staffing			
2 Adequate expenditure			
3 Audit attendance			
4 NR management plan			
5 Zonation			
6 Leadership			
7 Display of material			
8 Event Book modules			
9 Event Book quality			
10 Compliance			
11 Game census			
12 Reporting & adaptive management			
13 Law enforcement			
14 Human Wildlife Conflict			
15 Harvesting management			
16 Sources of NR income			
17 Benefits produced			
18 Resource trends			
19 Resource targets			

Key to performance indicators

weak/bad

reasonable

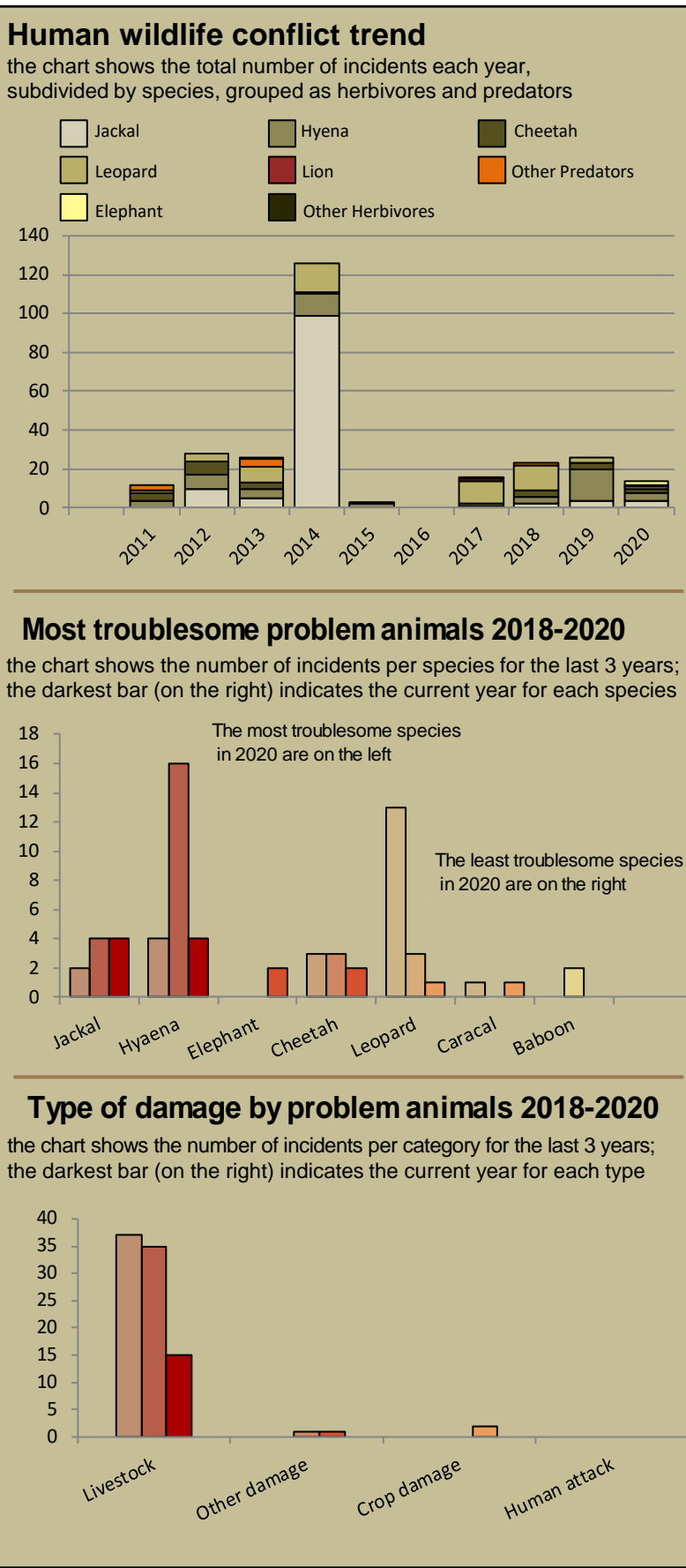
good

Performance is assessed on a scoring system from zero (none) to a maximum of between 3 and 6 (strong/excellent) depending on the indicator.

Indicators 1-17 reflect the performance of the management team in place in the conservancy and an efficient team can achieve a good rating in all 17 indicators.

Indicators 18 & 19 are influenced by external factors and are not considered a reflection of conservancy management. They indicate the current status of wildlife in the conservancy in relation to a theoretical optimal situation.

Human wildlife conflict



Poaching



Wildlife removals – quota use and value

Potential value estimates (N\$) for a single animal:	Species	Quota 2020			Animals actually used in 2020						Potential	
		Total	Trophy	Other Use	Trophy	Own Use & Premium	Shoot & Sell	Capture & Sale	Problem Animal	Total Use	Trophy Value N\$	Other use Value N\$
<div><div>Potential trophy value</div><div>the average trophy value for that species in the conservancy landscape</div><div>trophy values vary depending on trophy quality, international recognition of the hunting operator and the hunting area</div><div>Potential other use value</div><div>the average live sale value of each high value species (indicated with an *). High value species are never used for meat</div><div>Fractions of animals indicate that a quota of 1 animal was awarded with conditions i.e.</div><div>a) over a period of several years and/or</div><div>b) is shared with other conservancies</div></div> <div>No hunting undertaken</div>												

monitoring numbers and trends for a healthy conservancy...

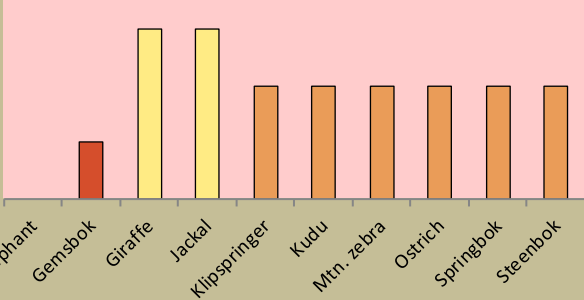
Current wildlife numbers and status

Species	Animals Seen 2020	Estimated population range	Wildlife Status		
			Count Trend	National Guideline	Desired Status
Elephant					
Gemsbok					
Giraffe					
Jackal					
Klipspringer					
Kudu					
Mtn. zebra					
Ostrich					
Springbok					
Steenbok					

Desired Number – gives the species status in the conservancy based on what the conservancy would like to have.

dark green (abundant) – reduce a lot;
light green (common) – reduce a little;
yellow (uncommon) – keep numbers the same;
light orange (rare) – double numbers;
dark orange (very rare) – more than double numbers.

Wildlife status summary in 2020

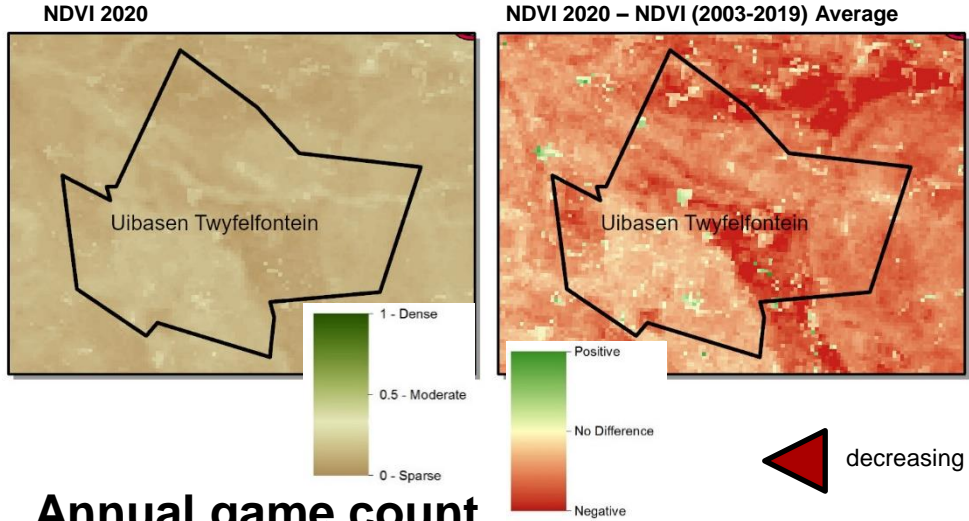


Key to wildlife status



Vegetation monitoring

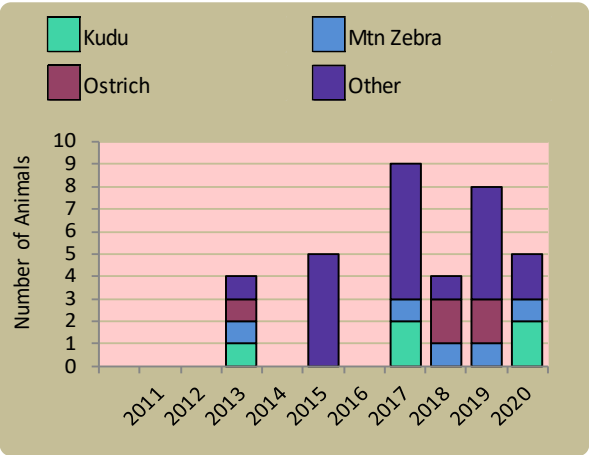
Green vegetation index (NDVI). Maps show vegetation cover during Feb-Apr of the current year and the difference between the current year and the long-term average (2003-2019)



Annual game count

Charts show the number of animals seen each year per 100 km driven during the game count. As a point of reference the dashed horizontal line represents the combined 10 year average in Palmwag and Etendeka concessions. Status flags reflect the general count trend over the last 5 years.

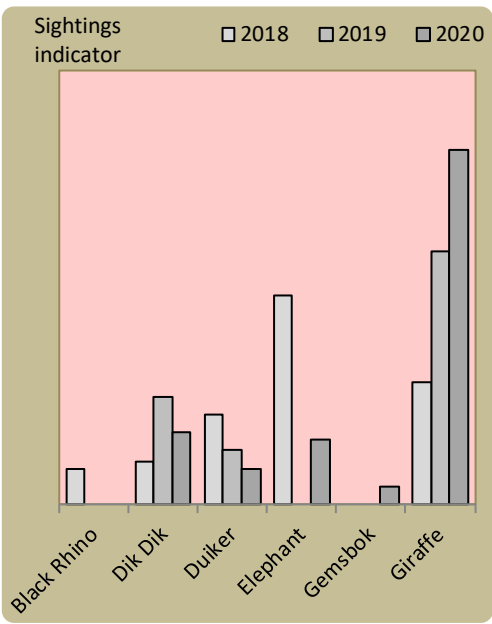
Wildlife mortalities



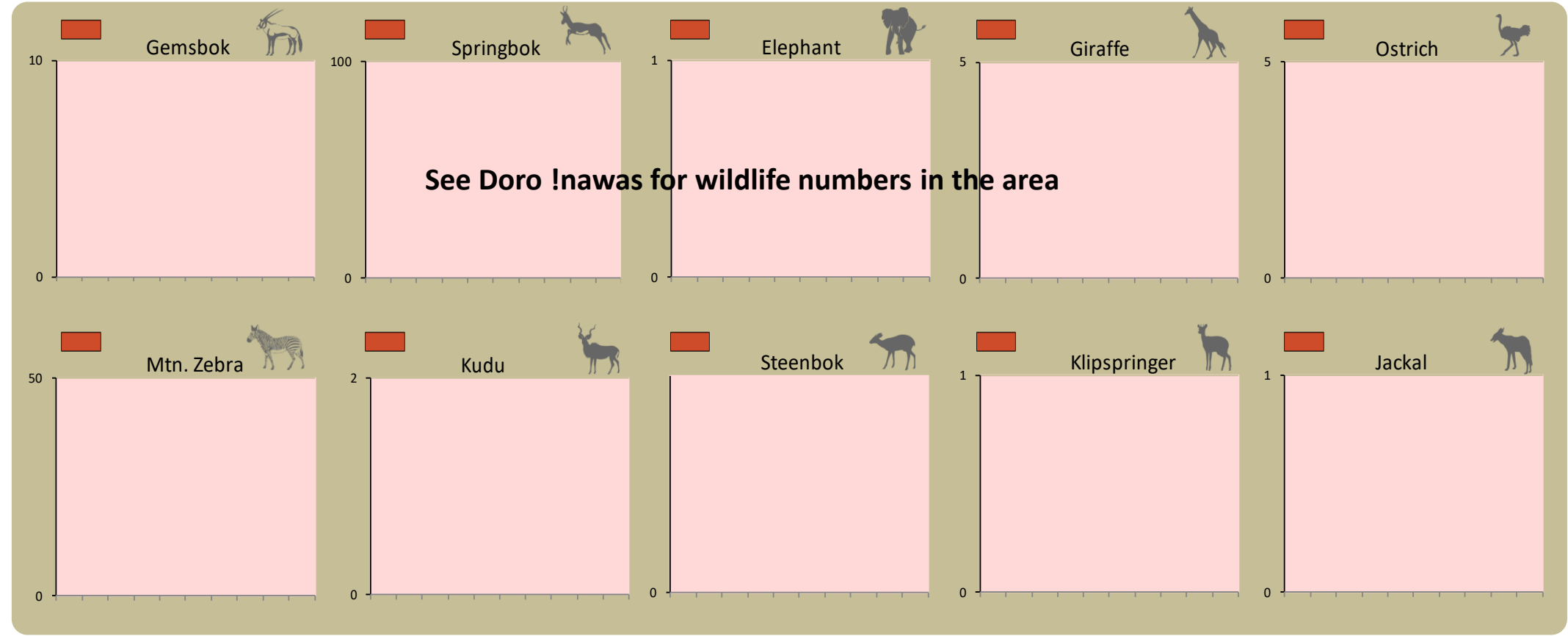
Flags



Locally rare species

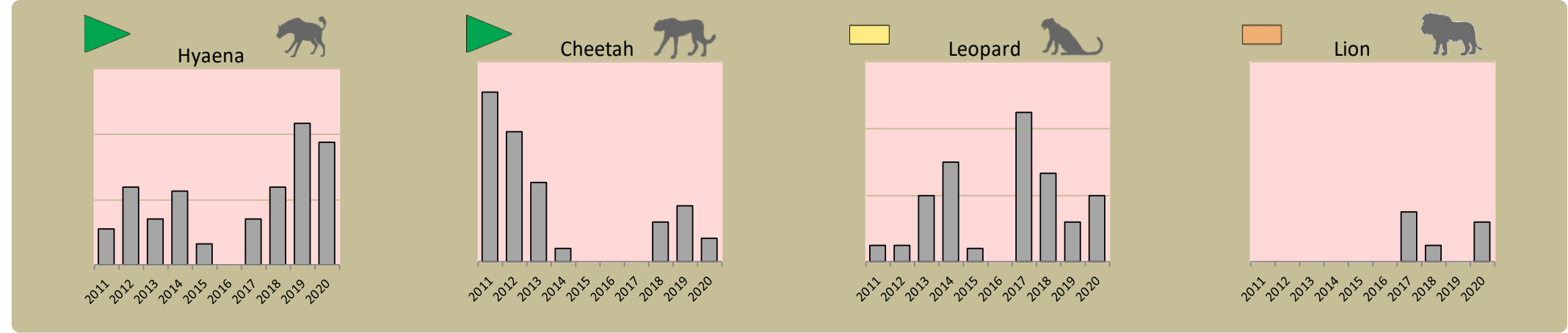


Locally rare species are not found very often in the conservancy and need special conservation attention.



Predator monitoring

charts show the average number of animals seen per Event Book each year
status barometers reflect the general sightings trend over the last 5 years



Wildlife provides a wide range of benefits. Some wildlife can cause conflicts, but all wildlife is of value to tourism, trophy hunting and a healthy environment.

By using all the available information and adapting and improving activities, threats such as human wildlife conflict, poaching and other issues can be minimised.

Enabling wise conservancy governance...

Conservancy Statistics

Date Registered:	December 1999
Population (2011 census):	230
Size (square kilometres):	286
Registered members:	230

Key Compliance Requirements

Was an AGM held?	✗
Were elections held?	N/A
Were benefits distributed according to the BDP?	✓
Is game managed according to the GMUP?	✓
Was the financial report presented and approved?	✗

Conservancy Governance

	Male	Female	Total
Number of management committee members	3	6	9
Attendance at AGM			
Date of the last AGM:			
Date of the next AGM:	Nov-21		
Other important issues			
	Budget approved?		
	Work plan approved?		
	Annual conservancy report approved?		

Benefit Distribution

Type	Description	Beneficiary	Number
Community Devp.	Blaauwpoort Borehole	Households	10
	Boreholes For Farmers	Households	5
	Dimab Garden	Households	12
Cash Benefits	Cash To Members	People	229
Social Benefits	Elders	People	30
	Food Parcels	Households	60
	Funerals	Households	6
	Orphans	Children	13
	Scholarships	Students	5
Other Benefits	Hwc Offset	People	32
	Skca		
	Ta Benefits	People	1

Employment

	Male	Female	Total
Conservancy staff (Incl. CGG & CRM)	5	4	9
Number of Community Game Guards	4	1	5
Number of Community Resource Monitors			

Governance Performance Rating

How well did the conservancy perform in the past year?

<i>Performance Category</i>	<i>This Year</i>	<i>Prev. Year</i>	<i>Explanation of performance category</i>
1 Member engagement			The conservancy is adequately engaging its members
2a Benefit planning			The conservancy developed its BDP in a transparent and participatory manner
2b Benefit distribution			The conservancy distributes benefits to its members in a fair, transparent and equitable manner
3 Accountability			Conservancy members are holding the management committee accountable
4 Compliance			The conservancy is compliant with the standard operating proceedings (SOPs)
5 Stakeholder engagement			The conservancy maintains relationships with key external stakeholders
6 Financial management			The conservancy is effectively managing its finances

Colour codes:

none

weak

moderate

strong

exceptional

N/A