

maximising wildlife returns by minimising threats...

Performance Indicators

Management performance in 2020

Category	Performance
1 Adequate staffing	
2 Adequate expenditure	
3 Audit attendance	
4 NR management plan	
5 Zonation	
6 Leadership	
7 Display of material	
8 Event Book modules	
9 Event Book quality	
10 Compliance	
11 Game census	
12 Reporting & adaptive management	
13 Law enforcement	
14 Human Wildlife Conflict	
15 Harvesting management	
16 Sources of NR income	
17 Benefits produced	
18 Resource trends	
19 Resource targets	

Key to performance indicators

weak/bad	reasonable	good

Performance is assessed on a scoring system from zero (none) to a maximum of between 3 and 6 (strong/excellent) depending on the indicator.

Indicators 1-17 reflect the performance of the management team in place in the conservancy and an efficient team can achieve a good rating in all 17 indicators.

Indicators 18 & 19 are influenced by external factors and are not considered a reflection of conservancy management. They indicate the current status of wildlife in the conservancy in relation to a theoretical optimal situation.

Human wildlife conflict

Human wildlife conflict trend

the chart shows the total number of incidents each year, subdivided by species, grouped as herbivores and predators

Most troublesome problem animals 2018-2020

the chart shows the number of incidents per species for the last 3 years; the darkest bar (on the right) indicates the current year for each species

Type of damage by problem animals 2018-2020

the chart shows the number of incidents per category for the last 3 years; the darkest bar (on the right) indicates the current year for each type

Poaching

Number of incidents per year

Commercial poaching is a serious threat to conservancy benefits. The chart shows the number of incidents per category

Traps and firearms recovered

number of incidents per category

Arrests and convictions

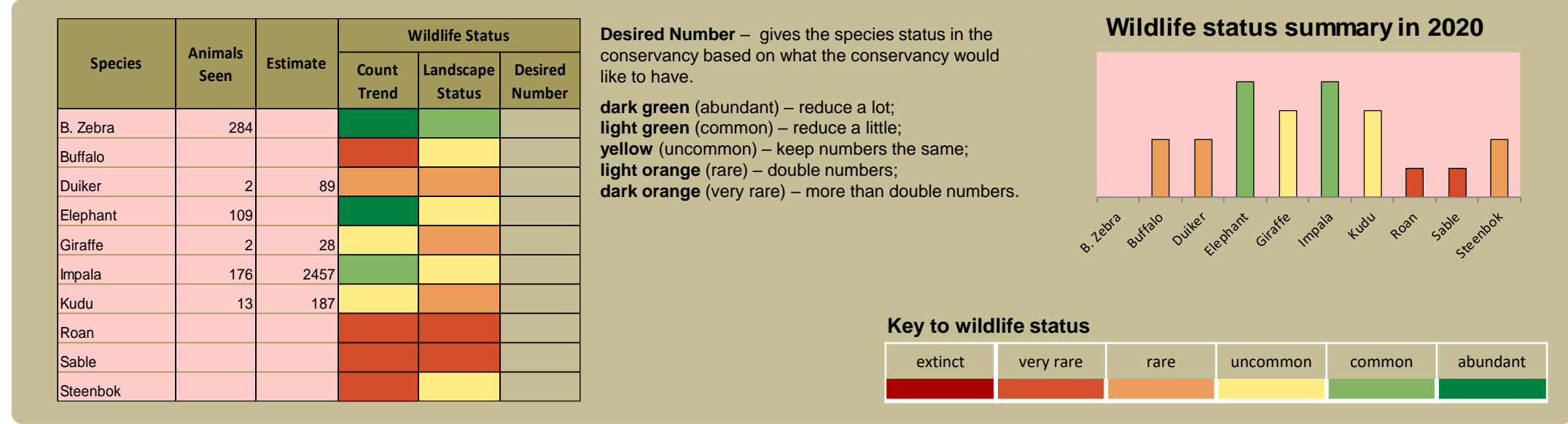
number of incidents per category

Wildlife removals – quota use and value

Potential value estimates (N\$) for a single animal:	Species	Quota 2020			Animals actually used in 2020						Potential	
		Total	Trophy	Other Use	Trophy	Own Use & Premium	Shoot & Sell	Capture & Sale	Problem Animal	Total Use	Trophy Value N\$	Other use Value N\$
<div><div>Potential trophy value</div><p>the average trophy value for that species in the conservancy landscape</p><p>trophy values vary depending on trophy quality, international recognition of the hunting operator and the hunting area</p><div>Potential other use value</div><p>the average live sale value of each high value species (indicated with an *). High value species are never used for meat</p></div> <div>or</div> <div><p>the average live sale value of each high value species (indicated with an *). High value species are never used for meat</p></div> <div>Fractions of animals indicate that a quota of 1 animal was awarded with conditions i.e.</div> <div>a) over a period of several years and/or</div> <div>b) is shared with other conservancies</div>	Baboon	2	2								400	
	Buffalo	7	6	1	6	1				7	79,200	7,425
	Crocodile	4	1	3							29,300	
	Duiker	2	2								1,900	
	Elephant*	10	6	4	6	3			1	11	220,800	90,000
	Giraffe	1	1								10,600	
	Hippo	4	2	2	2	1				3	35,500	7,425
	Impala	30	10	20	10	15				30	2,700	918
	Kudu	6	2	4	2	3				6	5,900	3,483
	Warthog	10	3	7							2,300	540
	Waterbuck*	1	1									7,400
	Blue Wildebeest*	12	4	8	4	6				12	4,300	4,070
	B. Zebra	35	10	25	10	20				30	5,100	4,725

monitoring numbers and trends for a healthy conservancy...

Current wildlife numbers and status



Fixed route patrols

charts show the number of sightings of each species per fixed route foot patrol each year. Status flags reflect the general sightings trend over the last 5 years

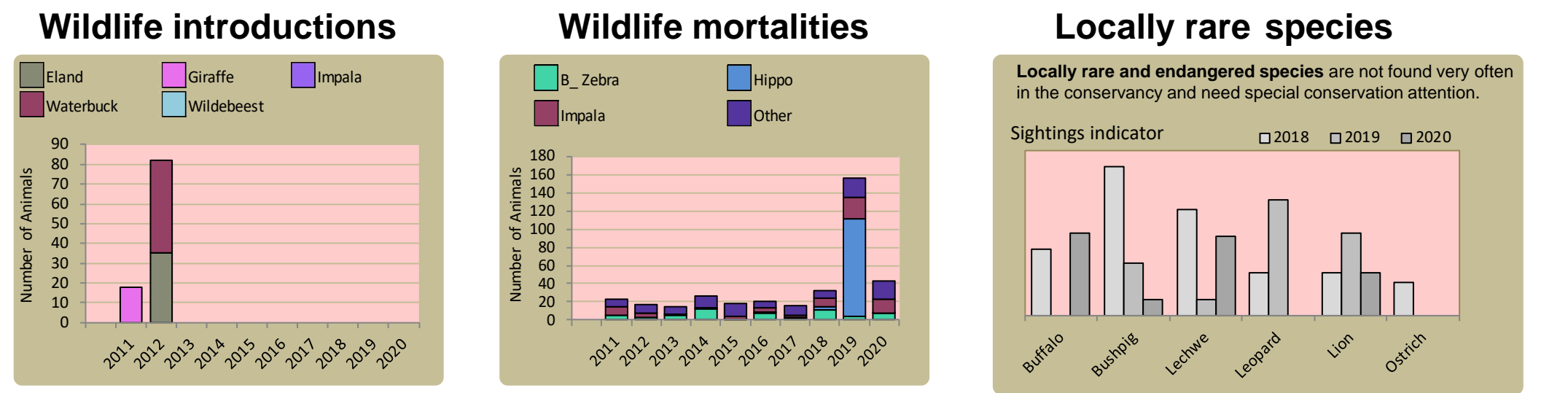
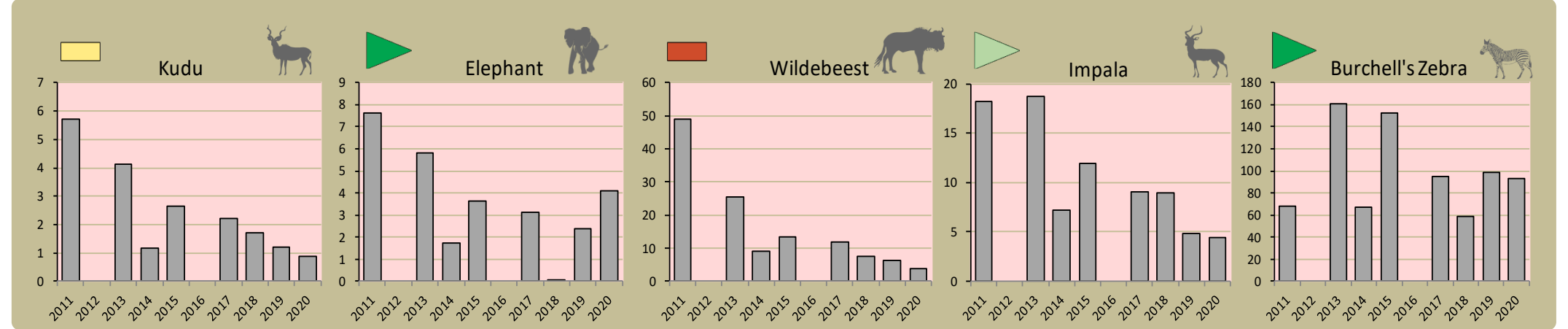
Flags

decreasing

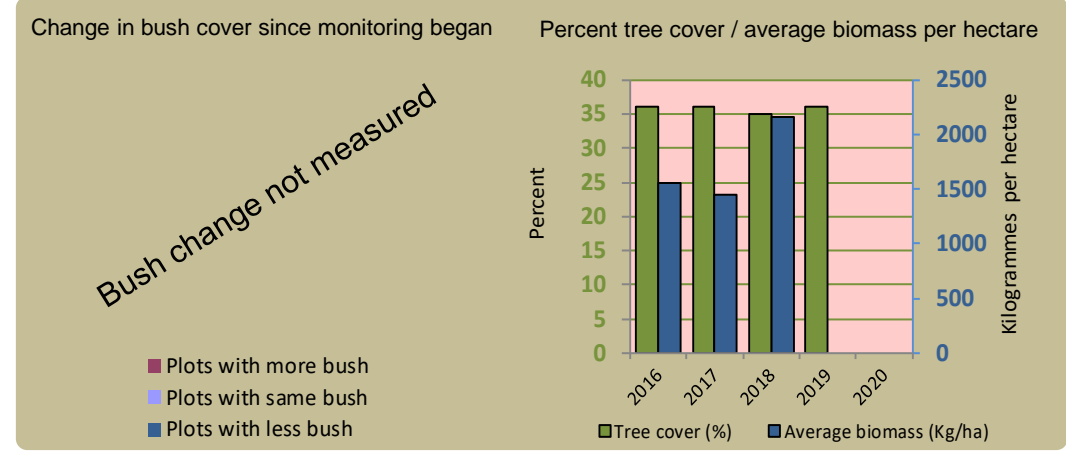
No change

No change, rarely recorded

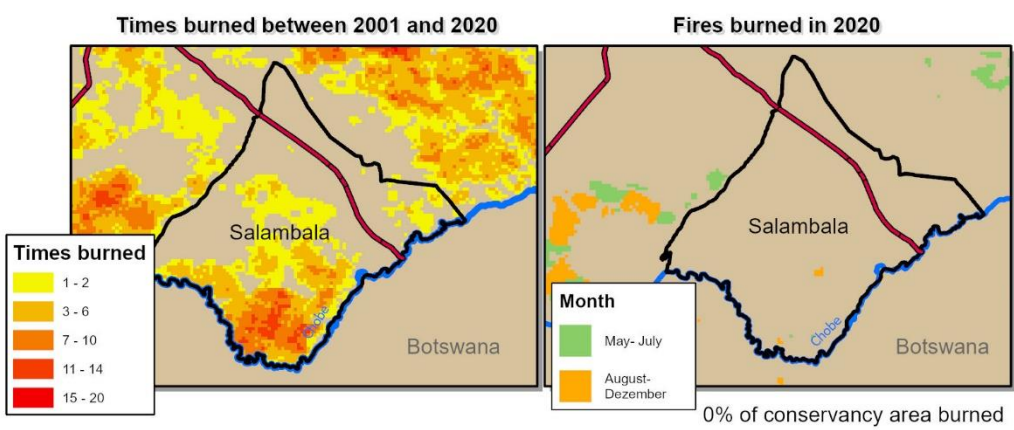
Increasing



Vegetation monitoring

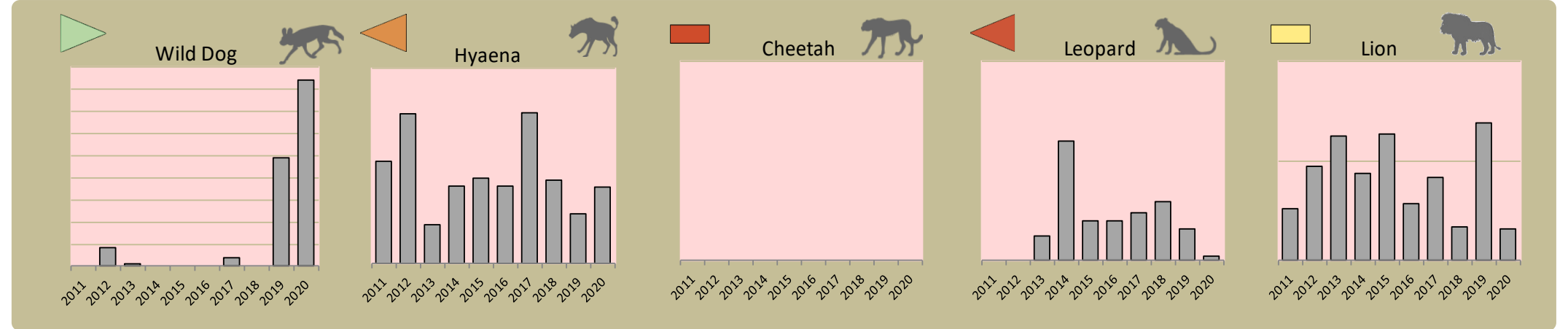


Fire monitoring



Predator monitoring

charts show the average number of animals seen per Event Book each year
Status flags reflect the general sightings trend over the last 5 years



Wildlife provides a wide range of benefits. Some wildlife can cause conflicts, but all wildlife is of value to tourism, trophy hunting and a healthy environment.

By using all the available information and adapting and improving activities, threats such as human wildlife conflict, poaching and other issues can be minimised.

Enabling wise conservancy governance...

Conservancy Statistics

Date Registered:	June 1998
Population (2011 census):	8240
Size (square kilometres):	930
Registered members:	11000

Key Compliance Requirements

Was an AGM held?	✓
Were elections held?	N/A
Were benefits distributed according to the BDP?	✓
Is game managed according to the GMUP?	✓
Was the financial report presented and approved?	✓

Conservancy Governance

	Male	Female	Total
Number of management committee members	26	12	38
Attendance at AGM	62	73	135
Date of the last AGM:	14/12/2020		
Date of the next AGM:	Dec-21		
Other important issues			
Budget approved?	✓		
Work plan approved?	✓		
Annual conservancy report approved?	✓		

Benefit Distribution

Type	Description	Beneficiary	Number
Social Benefits	Funeral Assistance (transport)		
	Soccer	People	22
Meat Distribution	Meat Distribution To Members	Areas	10
	Meat To Ta		
Other Benefits	Hwc Offset	People	25

Employment

	Male	Female	Total
Conservancy staff (Incl. CGG & CRM)	28	7	35
Number of Community Game Guards	20	2	22
Number of Community Resource Monitors			

Governance Performance Rating

How well did the conservancy perform in the past year?

Performance Category	This Year	Prev. Year	Explanation of performance category
1 Member engagement			The conservancy is adequately engaging its members
2a Benefit planning			The conservancy developed its BDP in a transparent and participatory manner
2b Benefit distribution			The conservancy distributes benefits to its members in a fair, transparent and equitable manner
3 Accountability			Conservancy members are holding the management committee accountable
4 Compliance			The conservancy is compliant with the standard operating procedures (SOPs)
5 Stakeholder engagement			The conservancy maintains relationships with key external stakeholders
6 Financial management			The conservancy is effectively managing its finances
Colour codes: <div>none</div> <div>weak</div> <div>moderate</div> <div>strong</div> <div>exceptional</div> <div>N/A</div>			