

maximising wildlife returns by minimising threats...

Performance Indicators

Management performance in 2022

Category	Performance		
1 Adequate staffing			
2 Adequate expenditure			
3 Audit attendance			
4 NR management plan			
5 Zonation			
6 Leadership			
7 Display of material			
8 Event Book modules			
9 Event Book quality			
10 Compliance			
11 Game census			
12 Reporting & adaptive management			
13 Law enforcement			
14 Human Wildlife Conflict			
15 Harvesting management			
16 Sources of NR income			
17 Benefits produced			
18 Resource trends			
19 Resource targets			

Key to performance indicators

weak/bad	reasonable	good

Performance is assessed on a scoring system from zero (none) to a maximum of between 3 and 6 (strong/excellent) depending on the indicator.

Indicators 1-17 reflect the performance of the management team in place in the conservancy and an efficient team can achieve a good rating in all 17 indicators.

Indicators 18 & 19 are influenced by external factors and are not considered a reflection of conservancy management. They indicate the current status of wildlife in the conservancy in relation to a theoretical optimal situation.

Human wildlife conflict

Human wildlife conflict trend

the chart shows the total number of incidents each year, subdivided by species, grouped as herbivores and predators

Most troublesome problem animals 2020-2022

the chart shows the number of incidents per species for the last 3 years; the darkest bar (on the right) indicates the current year for each species

Type of damage by problem animals 2020-2022

the chart shows the number of incidents per category for the last 3 years; the darkest bar (on the right) indicates the current year for each type

Poaching

Number of incidents per year

Commercial poaching is a serious threat to conservancy benefits. The chart shows the number of incidents per category

Traps and firearms recovered

number of incidents per category

Arrests and convictions

number of incidents per category

Wildlife removals – quota use and value

Potential value estimates (N\$) for a single animal:	Species	Quota 2022			Animals actually used in 2022						Potential	
		Total	Trophy	Other Use	Trophy	Own Use & Premium	Shoot & Sell	Capture & Sale	Problem Animal	Total Use	Trophy Value N\$	Other use Value N\$
<div><div>Potential trophy value</div><p>the average trophy value for that species in the conservancy landscape</p><p>trophy values vary depending on trophy quality, international recognition of the hunting operator and the hunting area</p><div>Potential other use value</div><p>the average live sale value of each high value species (indicated with an *). High value species are never used for meat</p><div>Fractions of animals indicate that a quota of 1 animal was awarded with conditions i.e.</div><div>a) over a period of several years and/or</div><div>b) is shared with other conservancies</div></div>	Duiker	2		2								189
	Elephant*	0.33	0.33								491,200	
	Kudu	1		1								3,483
	Leopard	0.33	0.33								130,000	

# monitoring numbers and trends for a healthy conservancy...

## Current wildlife numbers and status

Species	Animals Seen 2022	Estimated population range	Wildlife Status	
			Count Trend	Landscape Status
Duiker				uncommon
Elephant				very rare
Gemsbok				rare
Giraffe				very rare
Jackal				common
Klipspringer				
Kudu				rare
Mtn. zebra				
Ostrich				very rare
Springbok				rare

### Key to wildlife status

extinct	very rare	rare	uncommon	common	abundant
---------	-----------	------	----------	--------	----------

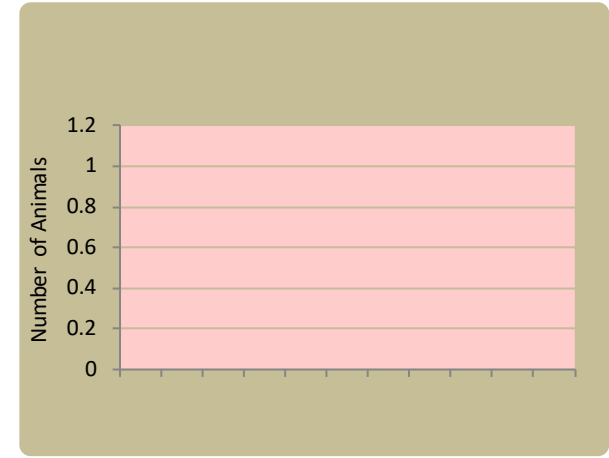
### Key to count trend

dark green – strong increase  
light green – slight increase  
yellow – more or less stable  
light orange – slight decline  
dark orange – strong decline

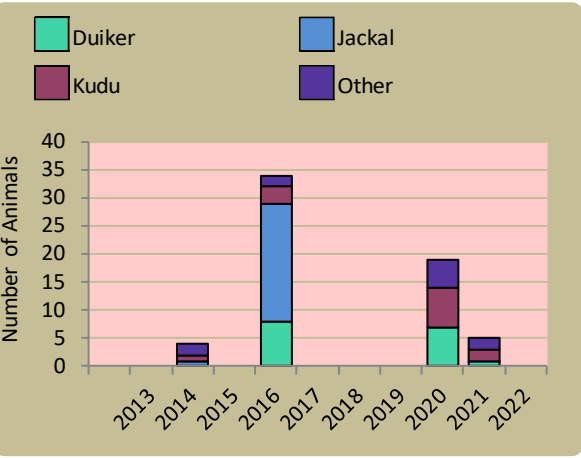
### Wildlife status summary in 2022

### Wildlife status summary is based on both the species trend and its status in the landscape

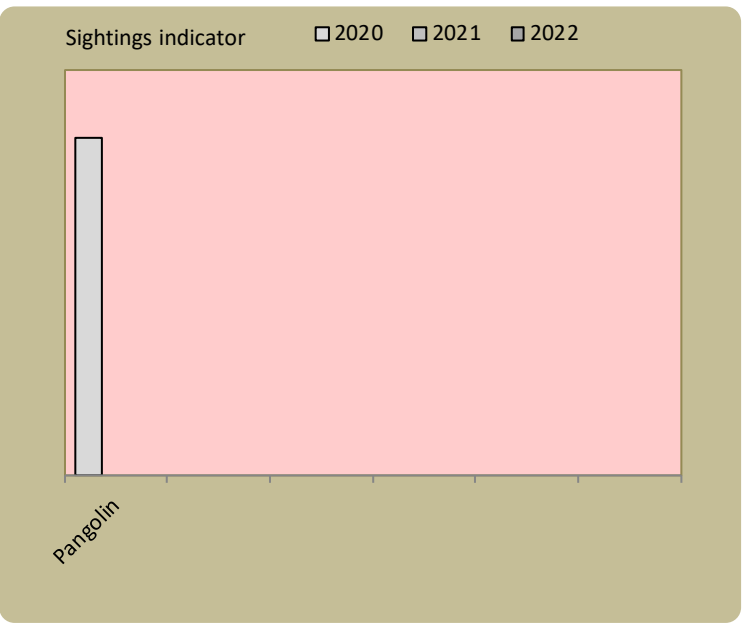
## Wildlife introductions



## Wildlife mortalities



## Locally rare species



## Annual game count – not undertaken in the east

## Predator monitoring

charts show the average number of animals seen per Event Book each year  
status barometers reflect the general sightings trend over the last 5 years

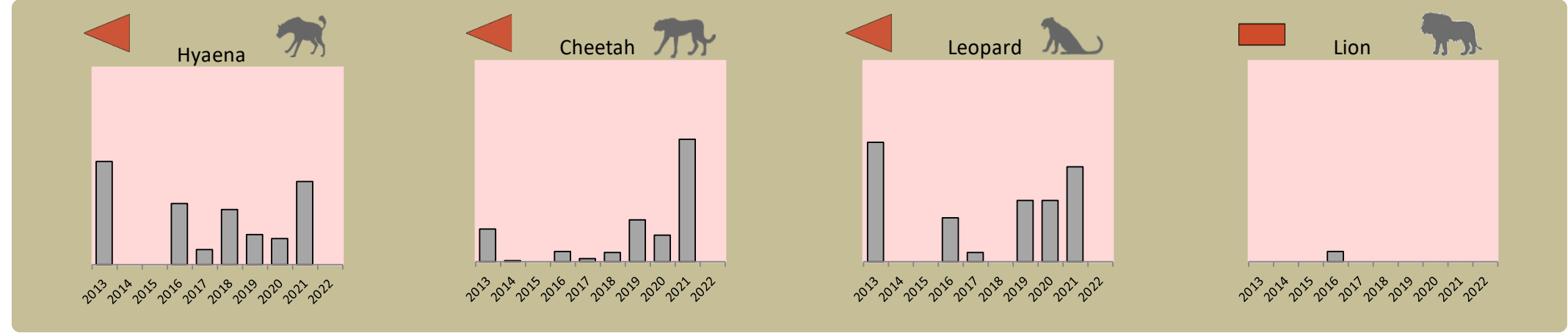
### Flags

decreasing

no change

increasing

no change, rarely recorded



Wildlife provides a wide range of benefits. Some wildlife can cause conflicts, but all wildlife is of value to tourism, trophy hunting and a healthy environment.

By using all the available information and adapting and improving activities, threats such as human wildlife conflict, poaching and other issues can be minimised.

Colour codes:

N/A