

maximising wildlife returns by minimising threats...

Performance Indicators

Management performance in 2020			
Category	Performance		
1 Adequate staffing			
2 Adequate expenditure			
3 Audit attendance			
4 NR management plan			
5 Zonation			
6 Leadership			
7 Display of material			
8 Event Book modules			
9 Event Book quality			
10 Compliance			
11 Game census			
12 Reporting & adaptive management			
13 Law enforcement			
14 Human Wildlife Conflict			
15 Harvesting management			
16 Sources of NR income			
17 Benefits produced			
18 Resource trends			
19 Resource targets			

Key to performance indicators

weak/bad

reasonable

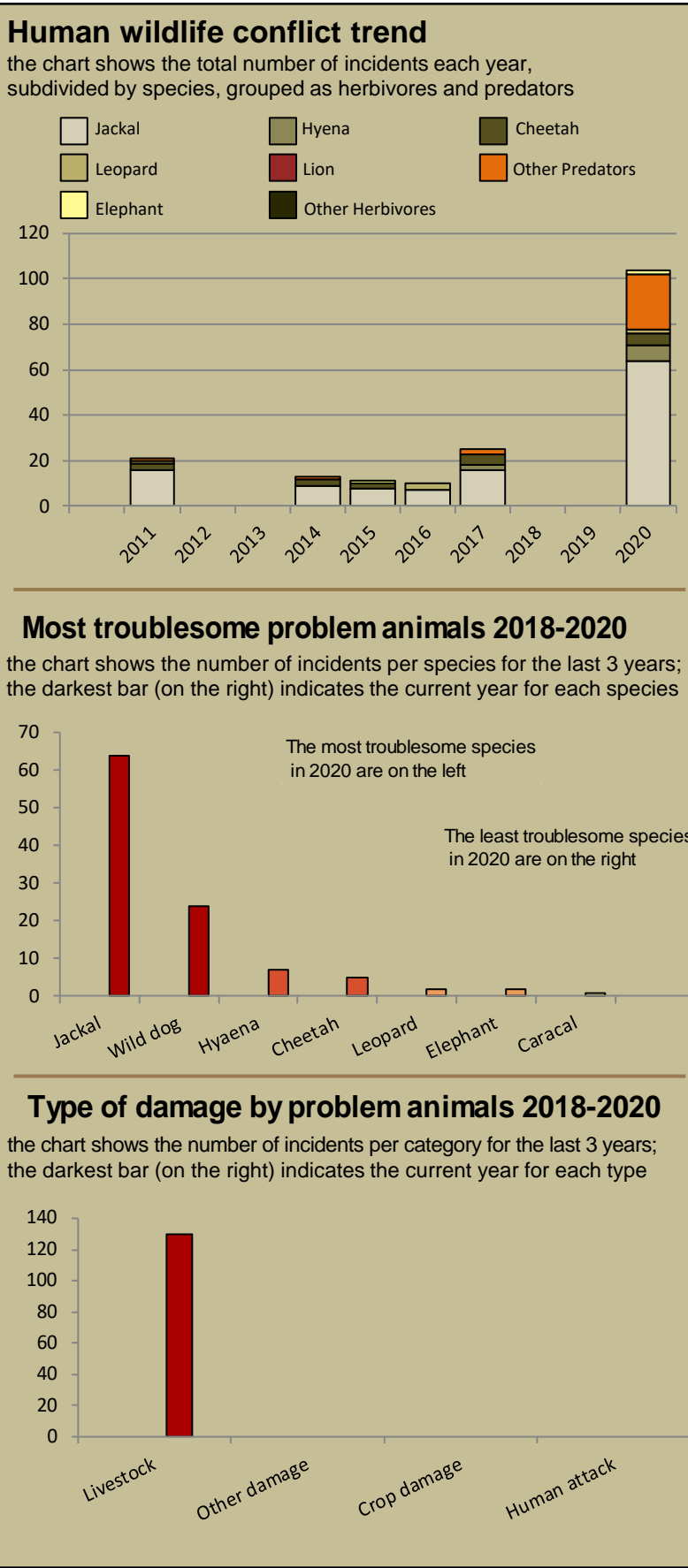
good

Performance is assessed on a scoring system from zero (none) to a maximum of between 3 and 6 (strong/excellent) depending on the indicator.

Indicators 1-17 reflect the performance of the management team in place in the conservancy and an efficient team can achieve a good rating in all 17 indicators.

Indicators 18 & 19 are influenced by external factors and are not considered a reflection of conservancy management. They indicate the current status of wildlife in the conservancy in relation to a theoretical optimal situation.

Human wildlife conflict



Poaching



Wildlife removals – quota use and value

<div><div>Potential trophy value</div><div>the average trophy value for that species in the conservancy landscape</div><div>trophy values vary depending on trophy quality, international recognition of the hunting operator and the hunting area</div><div>Potential other use value</div><div>the average live sale value of each high value species (indicated with an *). High value species are never used for meat</div><div>Fractions of animals indicate that a quota of 1 animal was awarded with conditions i.e.</div><div>a) over a period of several years and/or</div><div>b) is shared with other conservancies</div></div>	Species	Quota 2020			Animals actually used in 2020					Potential		
		Total	Trophy	Other Use	Trophy	Own Use & Premium	Shoot & Sell	Capture & Sale	Problem Animal	Total Use	Trophy Value N\$	Other use Value N\$

monitoring numbers and trends for a healthy conservancy...

Current wildlife numbers and status

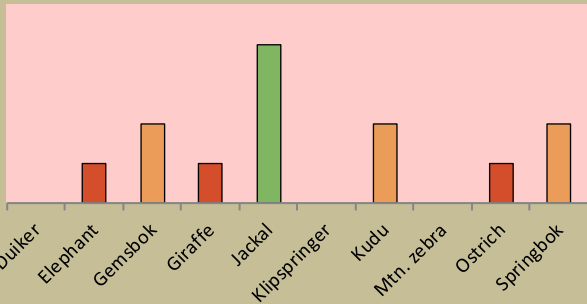
Species	Animals Seen 2020	Estimated population range	Wildlife Status		
			Count Trend	National Guideline	Desired Status
Duiker					
Elephant					
Gemsbok					
Giraffe					
Jackal					
Klipspringer					
Kudu					
Mtn. zebra					
Ostrich					
Springbok					

No counts undertaken

Desired Number – gives the species status in the conservancy based on what the conservancy would like to have.

dark green (abundant) – reduce a lot;
light green (common) – reduce a little;
yellow (uncommon) – keep numbers the same;
light orange (rare) – double numbers;
dark orange (very rare) – more than double numbers.

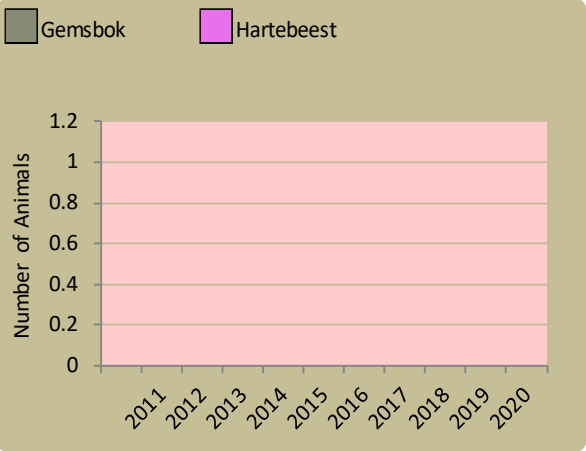
Wildlife status summary in 2020



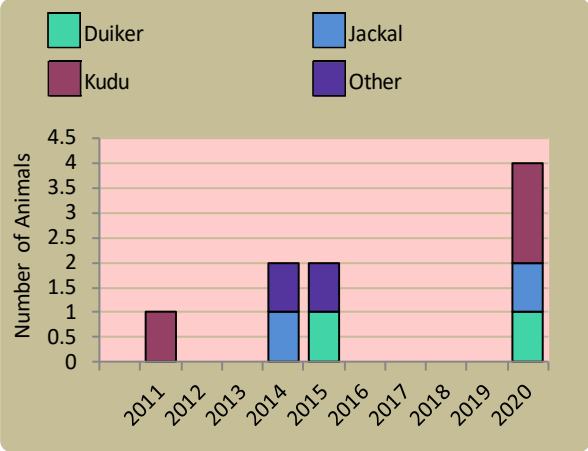
Key to wildlife status



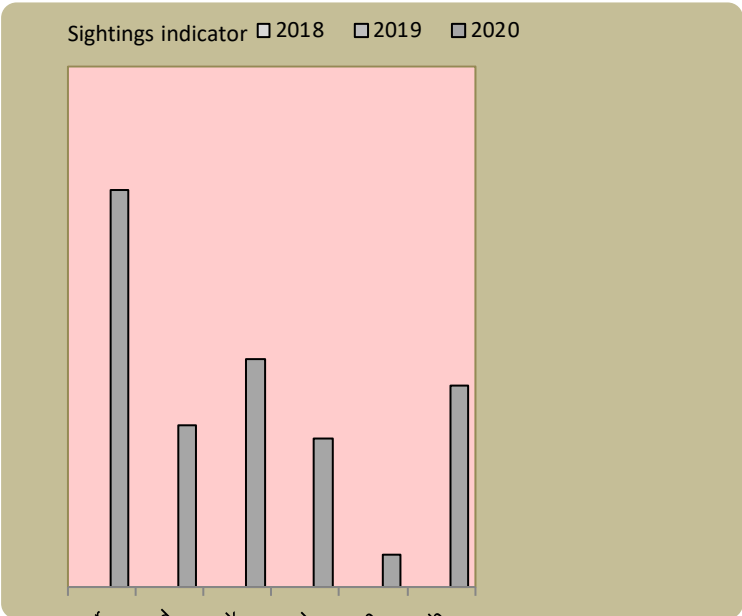
Wildlife introductions



Wildlife mortalities



Locally rare species

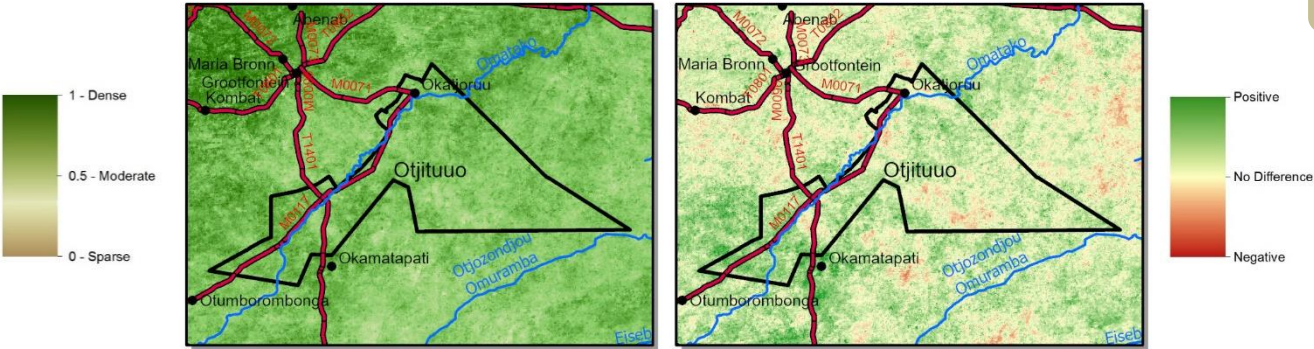


Vegetation

Green vegetation index (NDVI). Maps show vegetation cover during Feb-Apr of the current year and the difference between the current year and the long-term average (2003-2019)

NDVI 2020

NDVI 2020 – NDVI (2003-2019) Average



Predator monitoring

charts show the average number of animals seen per Event Book each year status barometers reflect the general sightings trend over the last 5 years

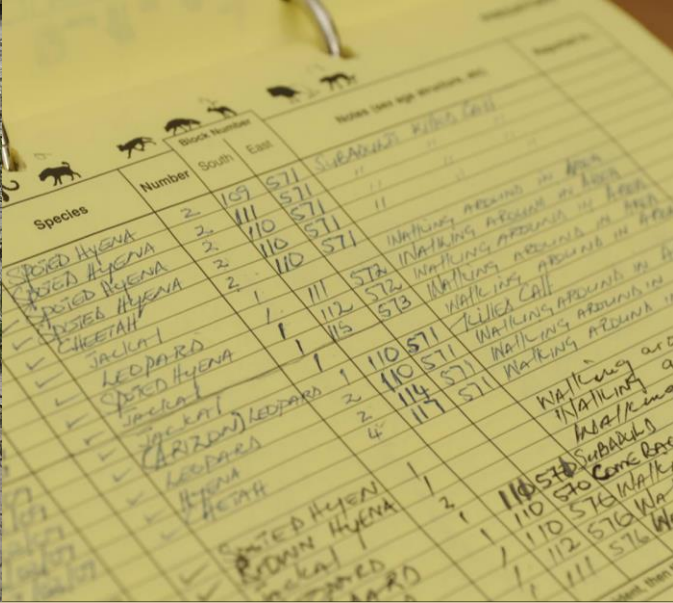
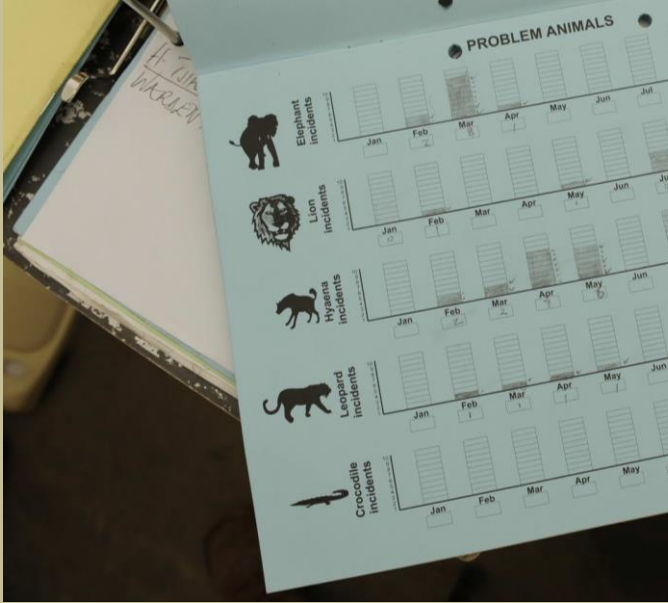
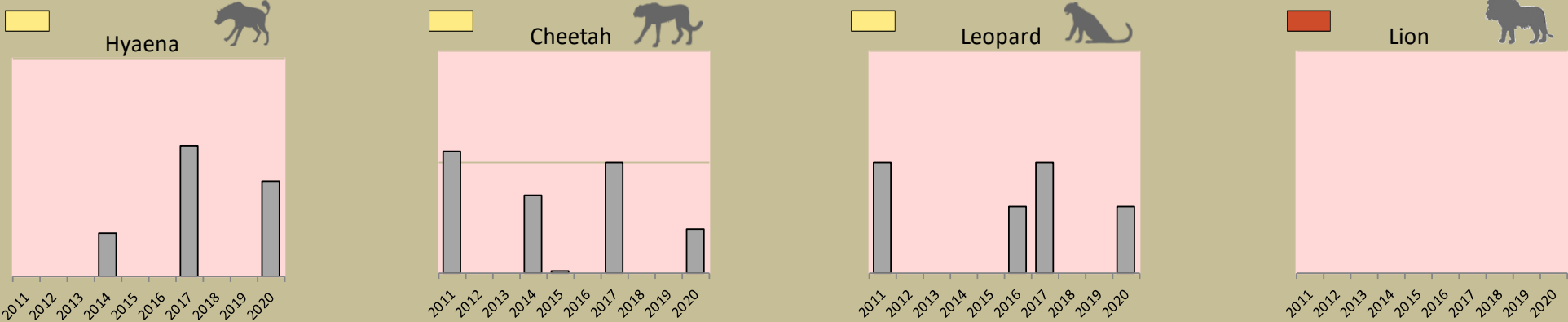


Hyaena

Cheetah

Leopard

Lion



Wildlife provides a wide range of benefits. Some wildlife can cause conflicts, but all wildlife is of value to tourism, trophy hunting and a healthy environment.

By using all the available information and adapting and improving activities, threats such as human wildlife conflict, poaching and other issues can be minimised.

Enabling wise conservancy governance...

Conservancy Statistics

Date Registered:	September 2005
Population (2011 census):	5790
Size (square kilometres):	6134
Registered members:	120

Key Compliance Requirements

Was an AGM held?	✗
Were elections held?	N/A
Were benefits distributed according to the BDP?	✓
Is game managed according to the GMUP?	✓
Was the financial report presented and approved?	✗

Conservancy Governance

	Male	Female	Total
Number of management committee members	11	4	15
Attendance at AGM			
Date of the last AGM:			
Date of the next AGM:	Feb-21		
Other important issues			
	Budget approved?		
	Work plan approved?		
	Annual conservancy report approved?		

Benefit Distribution

Type	Description	Beneficiary	Number
Social Benefits	Funeral Assistance	Households	1
	Stationary To Schools	Schools	2
Meat Distribution	Meat To Schools	Schools	2
Other Benefits	Hwc Offsets	People	35

Employment

	Male	Female	Total
Conservancy staff (Incl. CGG & CRM)	7		7
Number of Community Game Guards	6		6
Number of Community Resource Monitors			

Governance Performance Rating

How well did the conservancy perform in the past year?

Performance Category	This Year	Prev. Year	Explanation of performance category
1 Member engagement			The conservancy is adequately engaging its members
2a Benefit planning			The conservancy developed its BDP in a transparent and participatory manner
2b Benefit distribution			The conservancy distributes benefits to its members in a fair, transparent and equitable manner
3 Accountability			Conservancy members are holding the management committee accountable
4 Compliance			The conservancy is compliant with the standard operating proceedures (SOPs)
5 Stakeholder engagement			The conservancy maintains relationships with key external stakeholders
6 Financial management			The conservancy is effectively managing its finances
Colour codes: <div>none</div> <div>weak</div> <div>moderate</div> <div>strong</div> <div>exceptional</div> <div>N/A</div>			