

A collaboration between NACSO, MEFT and environmental NGOs

The fundamental purpose of game counts in communal areas is to inform conservancies and MEFT of wildlife trends for the purposes of adaptive management of resources...

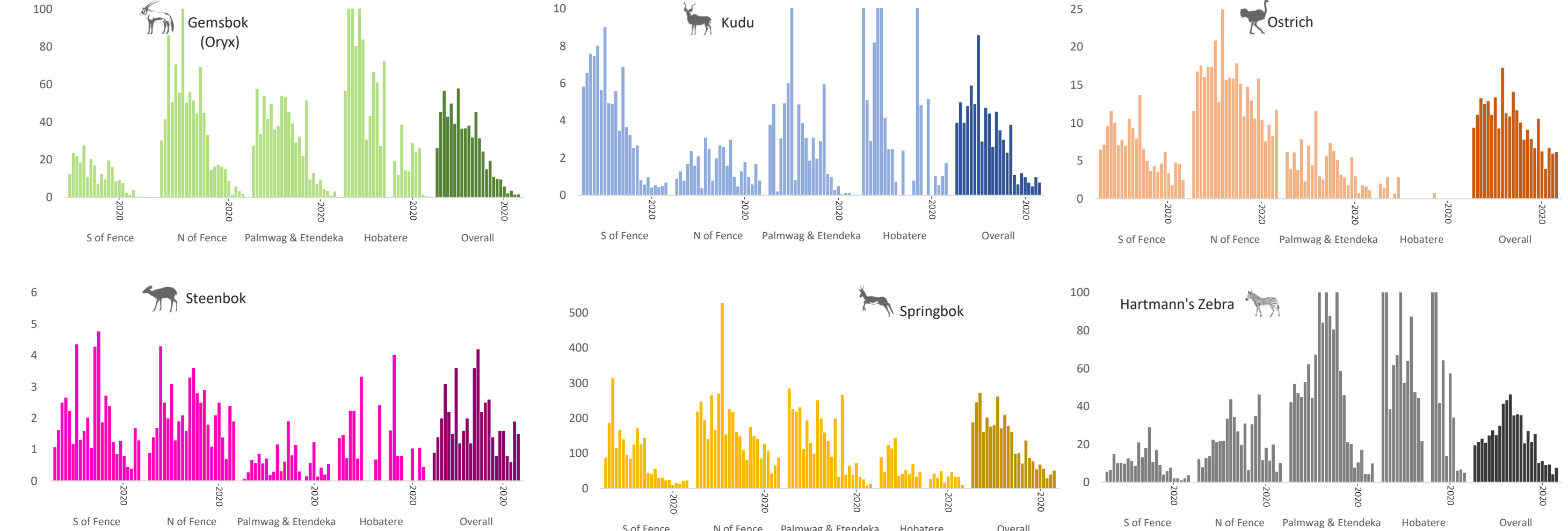
Total animals seen, and trends overall, include counts in the Skeleton Coast Park. Any other values are for conservancies and concessions only.

Total Population Estimates

Table with 7 columns: Species, Population Estimate, Lower 95% CL, Upper 95% CL, ESW (m), Estimate 2023, Median Estimate (2001-2023). Rows include Gemsbok, Kudu, Ostrich, Springbok, Steenbok, Hartmann's Zebra.

Estimates are derived using DISTANCE analysis which takes account of drop-off in detectability with distance from the transect line. They are conservative estimates as, on average, 27% of the count area is not sampled...

Trends Number of animals per 100km (conservancies and overall) (2001-2024) Number of animals per 50km (concessions)



Total number of animals seen each year

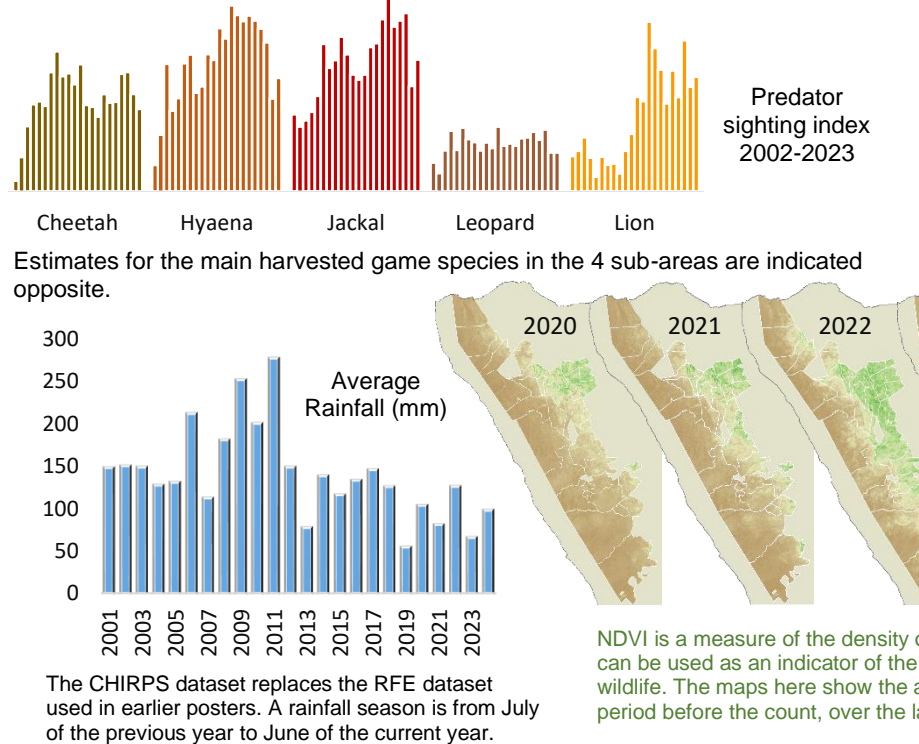
Large table showing annual counts from 2001 to 2024 for 26 species. Red highlights indicate critical status, orange highlights indicate need for careful monitoring.

The current status of species highlighted in red is critical, while those species highlighted in orange require careful monitoring.

Synopsis

Wildlife populations in north-west Namibia were severely impacted in the 1980s by a combination of severe drought and poaching. Community conservation, formalised in 1996 through conservancies facilitated an increase in wildlife numbers...

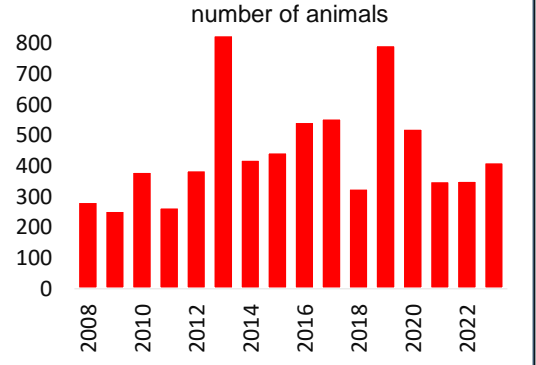
Etendeka (which represent only slightly more than 9% of the region) have been important natural refuges for many wildlife species. Trends in these areas often show radical spikes between years reflecting animal movements...



Harvesting offtake in conservancies

Table showing harvesting offtake in animals for 12 species from 2014 to 2023.

Mortalities in conservancies: number of animals



Summary 2024

Overall, the 2024 count showed stabilisation in five of the six main game species. However, numbers of Oryx and Kudu remain alarmingly low. In the sub-areas there is a growing distinction between conservancies north and south of the veterinary fence...

Animals seen(*) during this count and estimates (**)

Large table showing animals seen and estimates for 26 species across 30 sub-areas. Includes summary rows for NDVI Difference and Average Rainfall.

(*) Values in bold are numbers of animals seen along transects.

(**) Values in shaded rows are estimates derived using the Effective Strip Width (ESW) for each species from Distance analysis.

(***) NDVI is a measure of 'greenness' or biomass cover. The value presented is the % difference between the current year and the long-term average (2013-23).