

# GAME COUNTS IN NORTH-WEST NAMIBIA

## Hobatere concession

May 2021

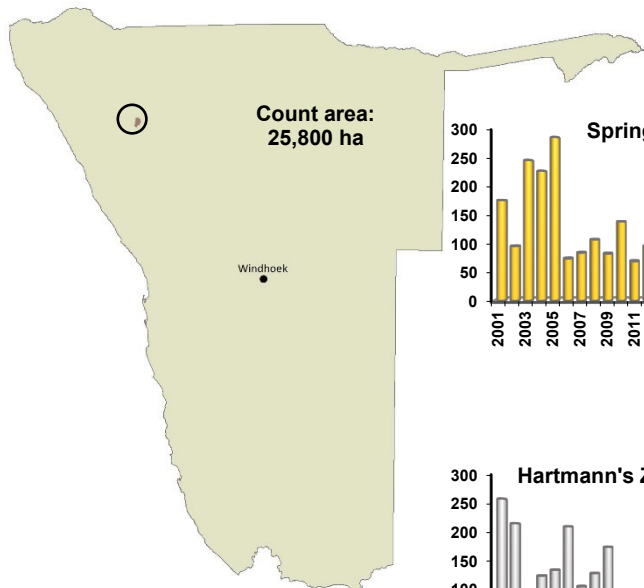
### Total number of animals seen each year

Species	2001	2002	2003	2004	2005	2006	2007	2008	2009	2010	2011	2012	2015	2016	2017	2018	2019	2020	2021
Baboon				4											1	20	20		
Eland	52	19		12	10	12	9						45	5			13		
Elephant	6	2	1				2	3			20	1	1	3	10		2		
Gemsbok	83	217	251	108	158	117	37	52	80	82	40	90	24	15	48	18	27	56	47
Giraffe	54	47	15	63	31	24	18	35	11	1	12	9	29	33	26	13	23	32	13
Jackal		9	3		5	4	5	3	3	8		3	8	7	4	2	6	2	2
Kudu	17	7	4	11	15	15	5	3	3	1		3	1	14	6		10		2
Ostrich	3	2	4		1	4								1					
Springbok	130	66	170	154	194	52	51	65	50	94	51	60	34	53	38	62	33	67	93
Steenbok	2	2	1	3	3	1	4			1	3	2	5	1	1				2
Warthog	3	9	8	1	10	5	1		2			1	4	1	3				1
H. Zebra	190	148	53	83	90	147	63	77	105	64	65	27	129	130	52	80	27	111	66

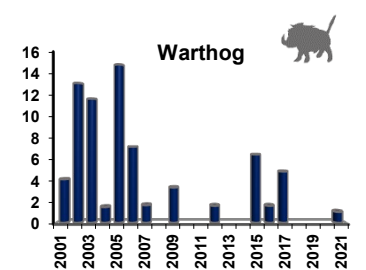
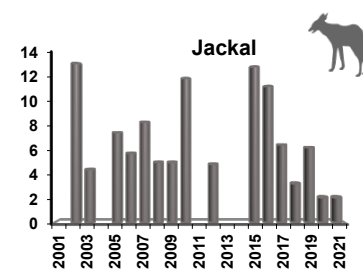
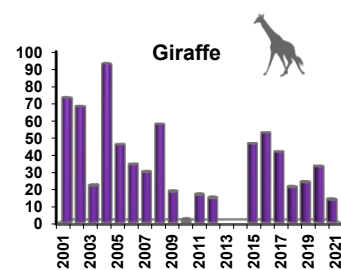
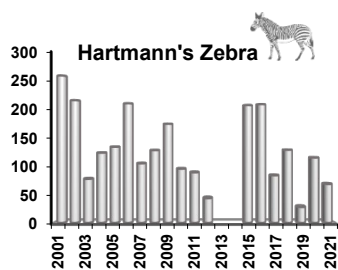
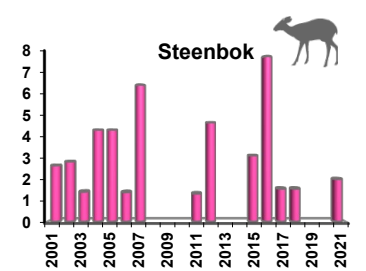
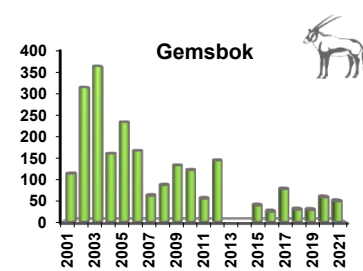
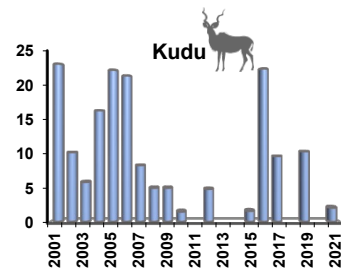
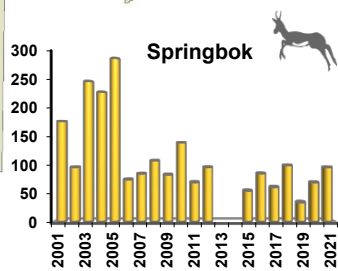
### Total Population Estimates

Species	Population estimate	Lower 95% CL	Upper 95% CL
Gemsbok (U)	174	47	1149
Kudu (U)	24	2	291
Springbok (U)	553	93	5570
Hartmann's Zebra (U)	183	66	1857

All above estimates are derived using DISTANCE analysis. This takes account of drop off in detection with distance from the transect line. Model selection: U = uniform key; HN = half normal



### Trends - Number of animals per 100km



### Animals seen during this count and minimum estimates

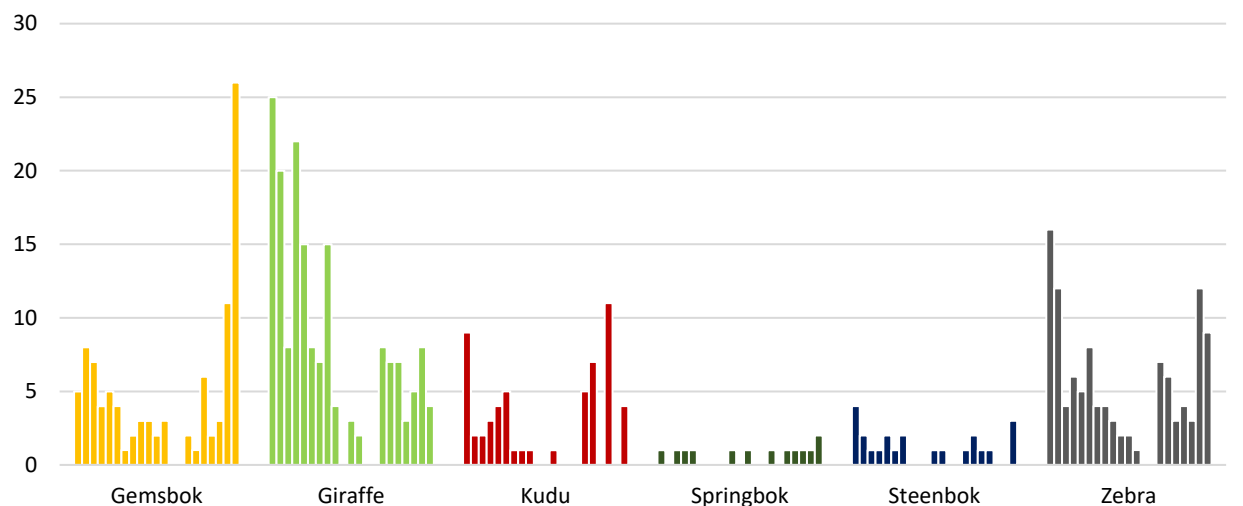
Values without brackets are numbers of animals seen along transects. Values inside brackets are minimum estimates assuming all animals within 500m on each side of the transect line are detected i.e. there is no adjustment for drop off in detection with distance from the transect line.

Total Route km	96
Total area (km <sup>2</sup> )	258
Number of routes	3
% area excluded	5

Species	Count	Minimum Estimate
Gemsbok	47	(87)
Giraffe	13	(50)
Kudu	2	
Ostrich		
Springbok	93	(201)
Steenbok	2	(9)
H. Zebra	66	(127)

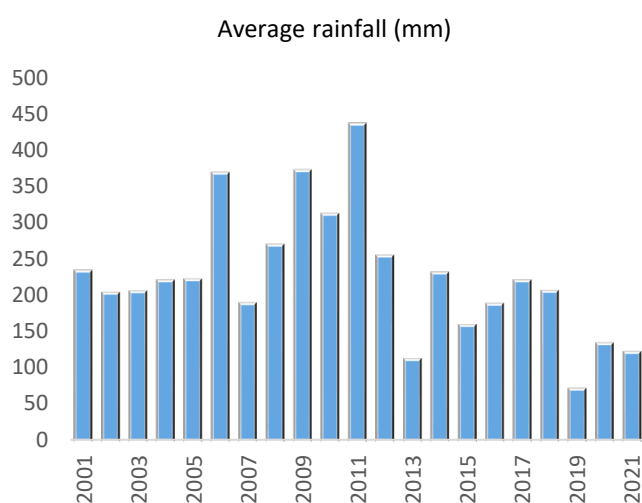
These values are significantly lower than the totals indicated in the top left table as the total estimates take account of species detection curves.

### Percentage of all animals counted in the NW: 2001-2021



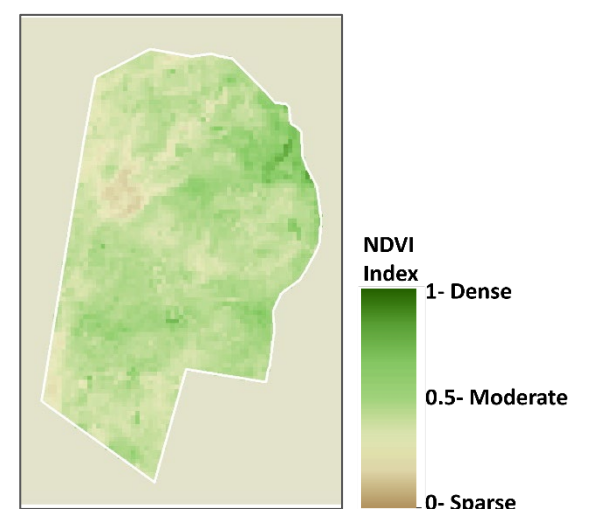
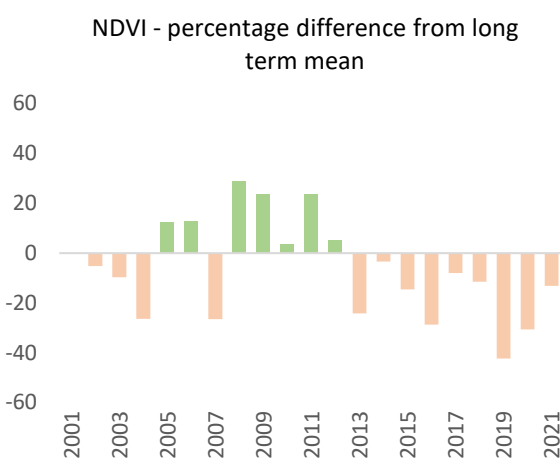
The dramatic spike in the proportion of gemsbok seen in Hobatere reflects the decline in numbers in communal conservancies. Palmwag, Etendeka and Hobatere concessions (only 9% of the total area) currently account for 60% of all gemsbok seen in the north west.

### Rainfall



The rainfall season is from July to June and values are an average for the whole area.

### Vegetation



NDVI is a measure of the density of chlorophyll in vegetation cover. It can be used as an indicator of the amount of biomass available to wildlife. The map shows the NDVI status in the current year (Feb-Apr) and the trend indicates the average deviation of the concession from the long-term mean, in each year.