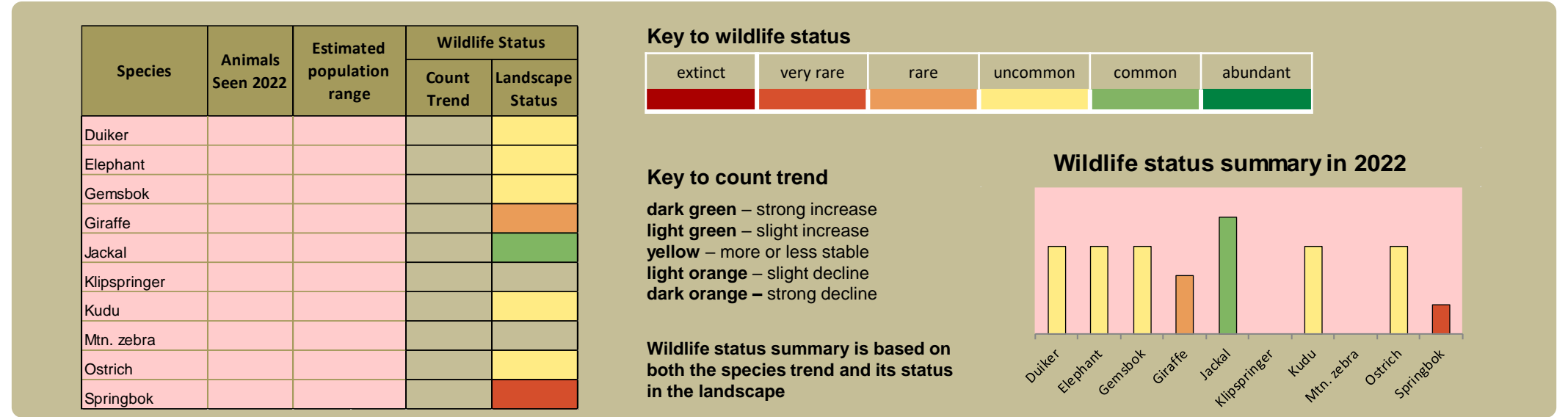


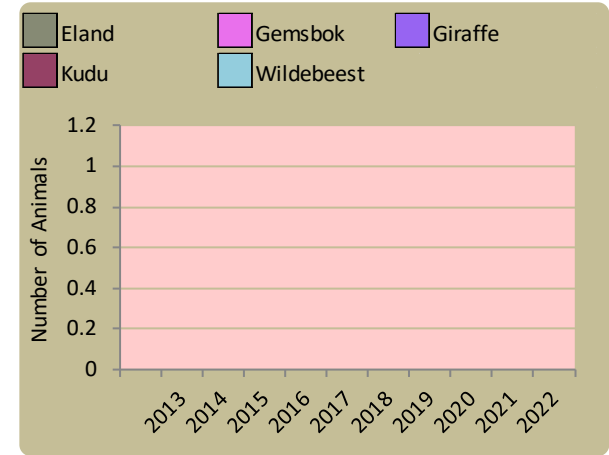


# monitoring numbers and trends for a healthy conservancy...

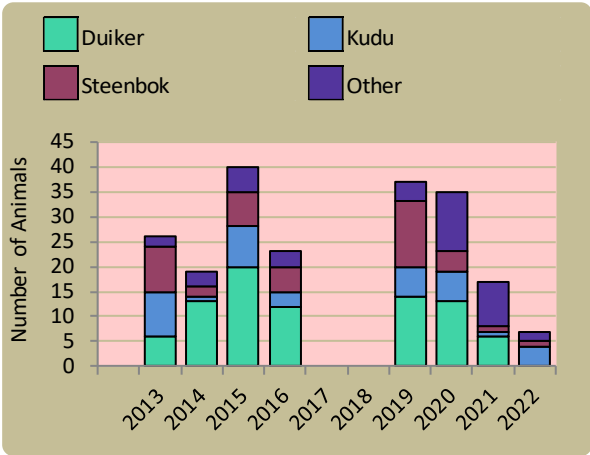
## Current wildlife numbers and status



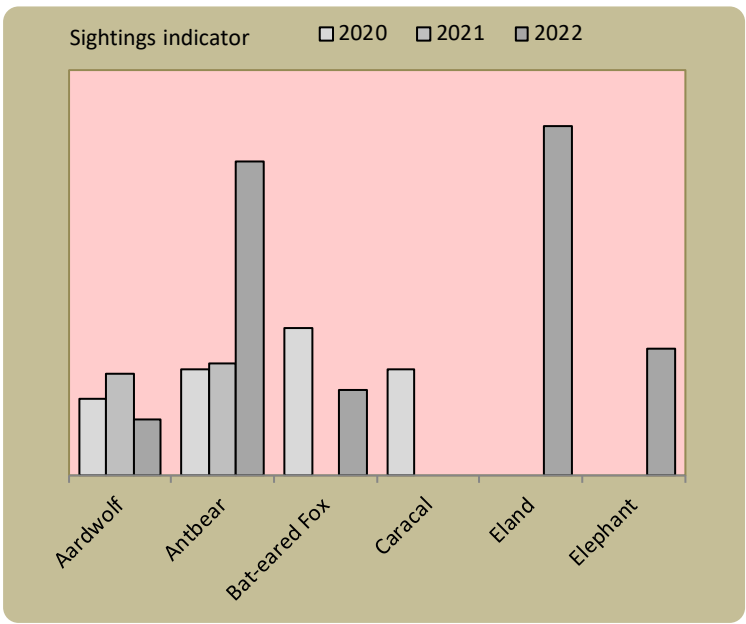
## Wildlife introductions



## Wildlife mortalities



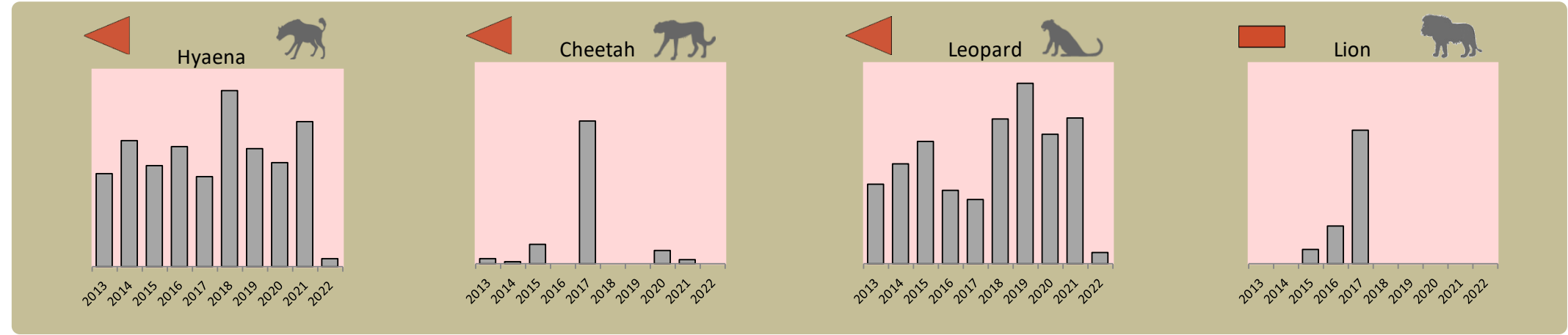
## Locally rare species



## Annual game count – not undertaken in the east

## Predator monitoring

charts show the average number of animals seen per Event Book each year  
status barometers reflect the general sightings trend over the last 5 years



Wildlife provides a wide range of benefits. Some wildlife can cause conflicts, but all wildlife is of value to tourism, trophy hunting and a healthy environment.

By using all the available information and adapting and improving activities, threats such as human wildlife conflict, poaching and other issues can be minimised.

## Enabling wise conservancy governance...

Conservancy Statistics	
Date Registered:	July 2003
Population (2011 census):	3540
Size (square kilometres):	9120
Registered members:	2500

Key Compliance Requirements	
Was an AGM held?	✓
Were elections held?	N/A
Were benefits distributed according to the BDP?	✓
Is game managed according to the GMUP?	✓
Was the financial report presented and approved?	✓

Conservancy Governance			
	Male	Female	Total
Number of management committee members	6	3	9
Attendance at AGM	30	25	55
Date of the last AGM:	25/07/2022		
Date of the next AGM:	Jul-23		
Other important issues			
Budget approved?	✔		
Work plan approved?	✔		
Annual conservancy report approved?	✔		

Benefit Distribution			
Type	Description	Beneficiary	Number
Community Devp.	Maintainance Of Water Infrastructure	Villages	7
Social Benefits	Diesel Supply	Villages	19
	Funeral Assistance	Members	35
Meat Distribution	Game Meat	Households	
Other Benefits	Hwc Offset	Members	7

Employment			
	Male	Female	Total
Conservancy staff (Incl. CGG & CRM)	13	2	15
Number of Community Game Guards	12	0	12
Number of Community Resource Monitors			

Governance Performance Rating

How well did the conservancy perform in the past year?

Performance Category	This Year	Prev. Year	Explanation of performance category
Member engagement			The conservancy is adequately engaging its members
Benefit planning			The conservancy developed its BDP in a transparent and participatory manner
Benefit distribution			The conservancy distributes benefits to its members in a fair, transparent and equitable manner
Accountability			Conservancy members are holding the management committee accountable
Stakeholder engagement			The conservancy maintains relationships with key external stakeholders
Financial management			The conservancy is effectively managing its finances