

maximising wildlife returns by minimising threats...

Kyaramacan Association (Omega 1, Omega 3, Chetto, Mutjiku Combined)

Performance Indicators

Management performance in 2022

Category	Performance		
1 Adequate staffing			
2 Adequate expenditure			
3 Audit attendance			
4 NR management plan			
5 Zonation			
6 Leadership			
7 Display of material			
8 Event Book modules			
9 Event Book quality			
10 Compliance			
11 Game census			
12 Reporting & adaptive management			
13 Law enforcement			
14 Human Wildlife Conflict			
15 Harvesting management			
16 Sources of NR income			
17 Benefits produced			
18 Resource trends			
19 Resource targets			

Key to performance indicators

weak/bad

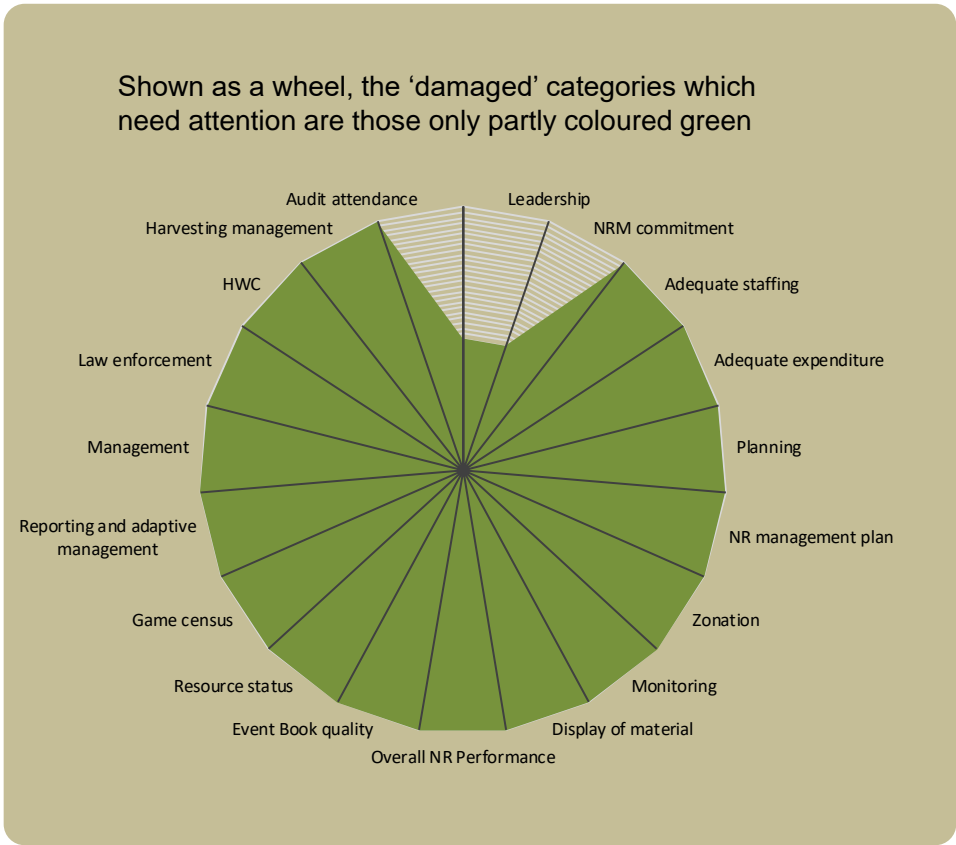
reasonable

good

Performance is assessed on a scoring system from zero (none) to a maximum of between 3 and 6 (strong/excellent) depending on the indicator.

Indicators 1-17 reflect the performance of the management team in place in the conservancy and an efficient team can achieve a good rating in all 17 indicators.

Indicators 18 & 19 are influenced by external factors and are not considered a reflection of conservancy management. They indicate the current status of wildlife in the conservancy in relation to a theoretical optimal situation.



© NACSO/WWF in Namibia  
<http://conservationphotographynamibia.com>

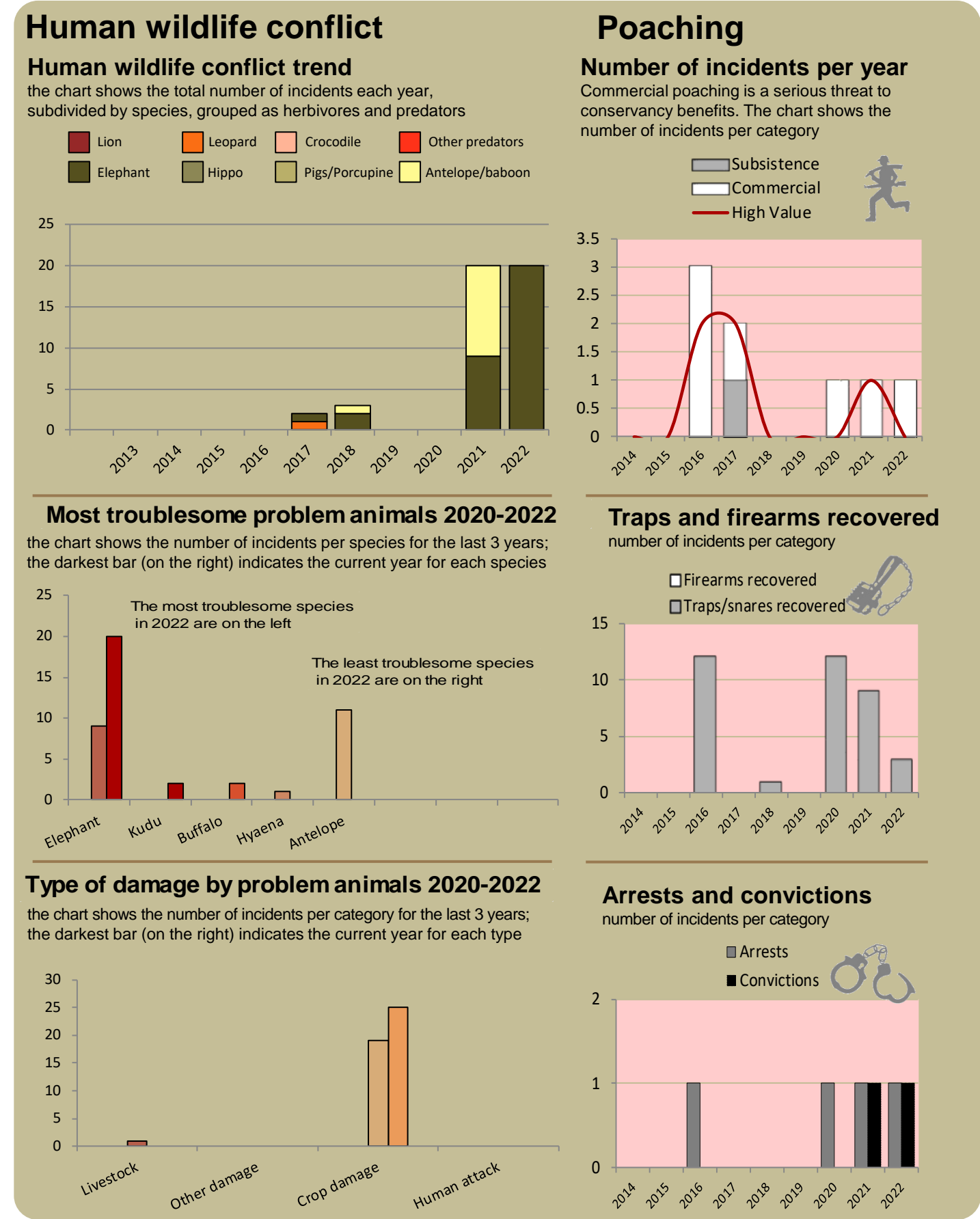
Wildlife removals – quota use and value

Potential value estimates (N\$) for a single animal: <div>----- • <b>Potential trophy value</b> - the average trophy value for that species in the conservancy landscape  trophy values vary depending on trophy quality, international recognition of the hunting operator and the hunting area ----- • <b>Potential other use value</b> - the average meat value for common species  or  the average live sale value of each high value species (indicated with an *). High value species are never used for meat -----  Fractions of animals indicate that a quota of 1 animal was awarded with conditions i.e. a) over a period of several years and/or b) is shared with other conservancies</div>	Species	Quota 2022			Animals actually used in 2022						Potential	
		Total	Trophy	Other Use	Trophy	Own Use & Premium	Shoot & Sell	Capture & Sale	Problem Animal	Total Use	Trophy Value N\$	Other use Value N\$
No Utilisation data												

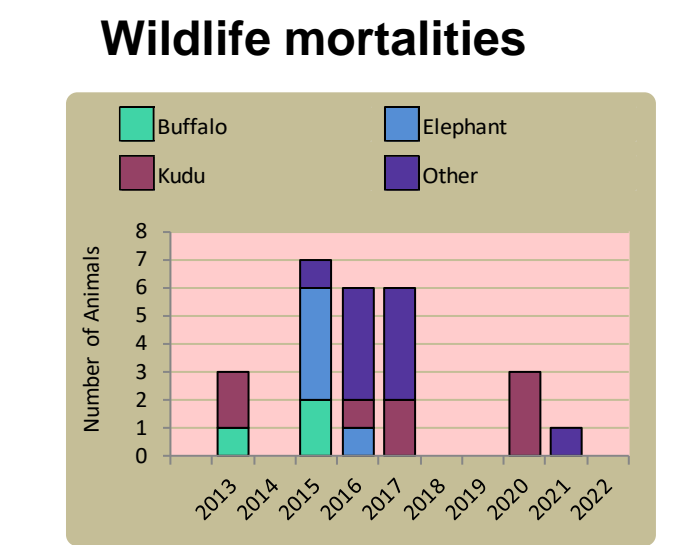
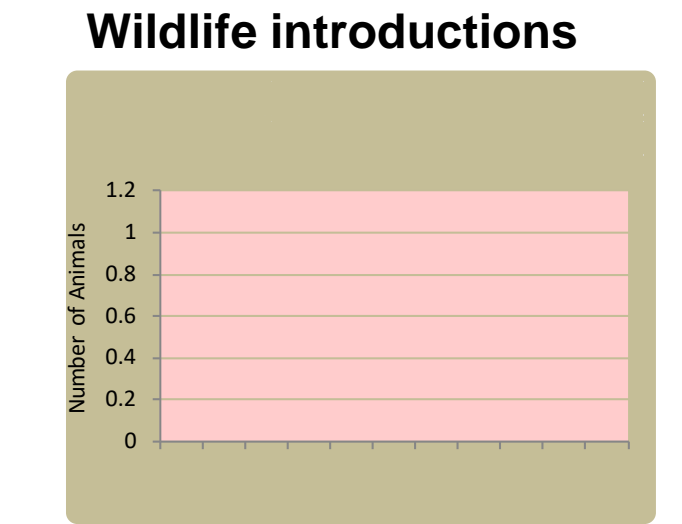
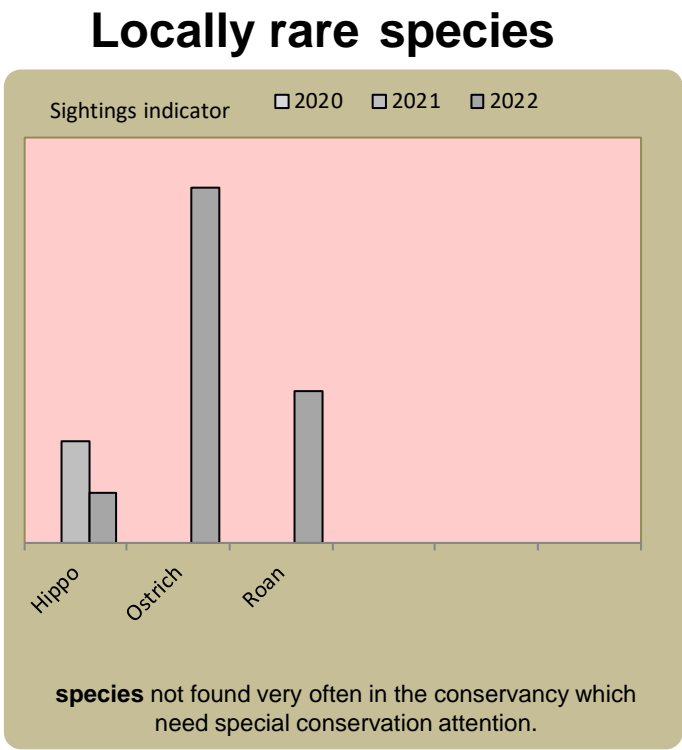
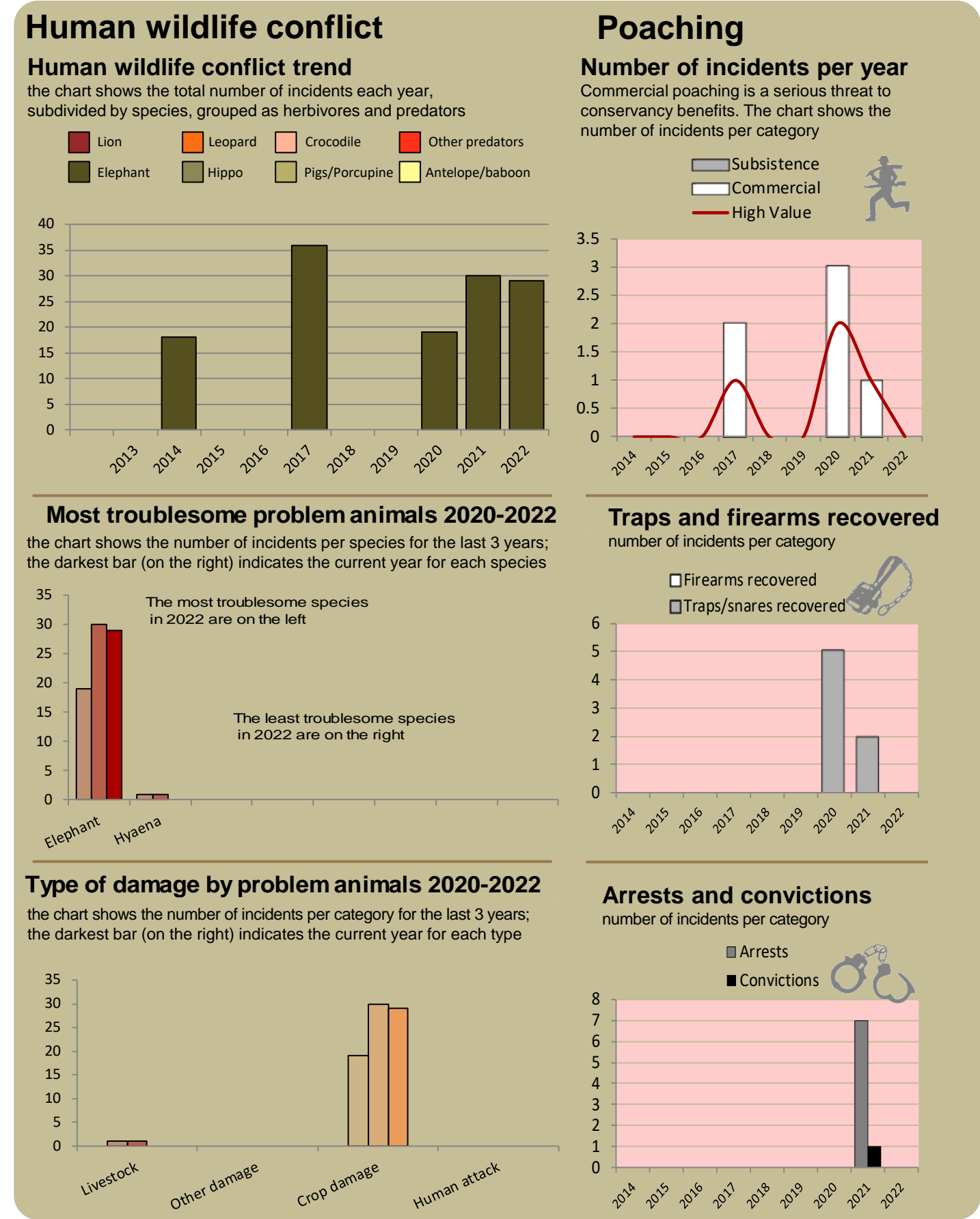
Effective monitoring is key to understanding the status of wildlife in the conservancy and for the effective management of these resources.

Conservancies reduce environmental costs while increasing environmental returns.  
Returns from wildlife can far outweigh human wildlife conflict costs.

Kyaramacan Association:Chetto

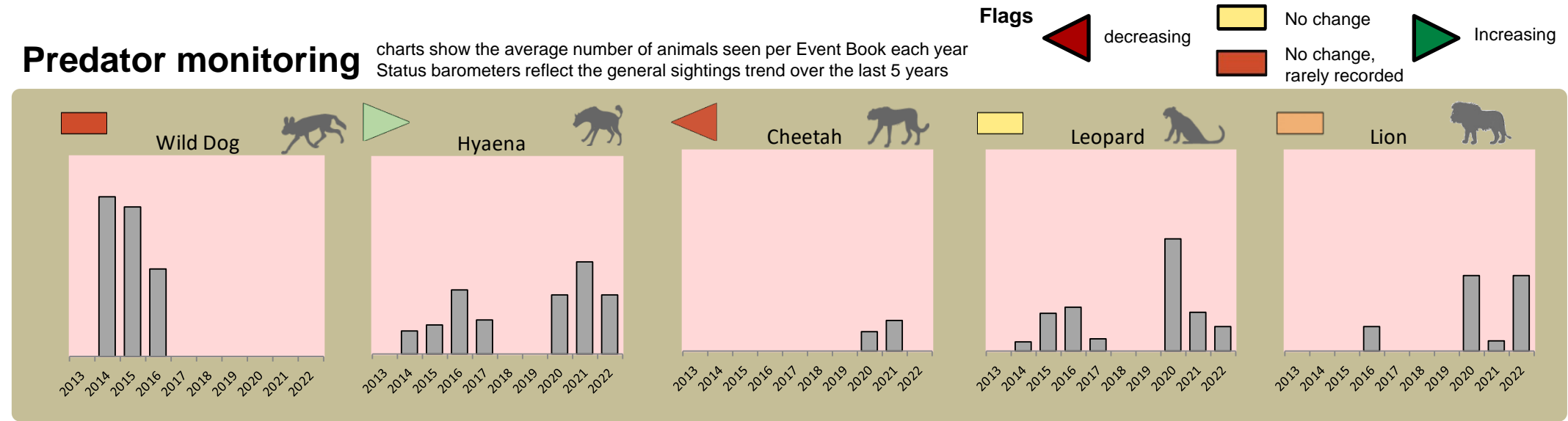
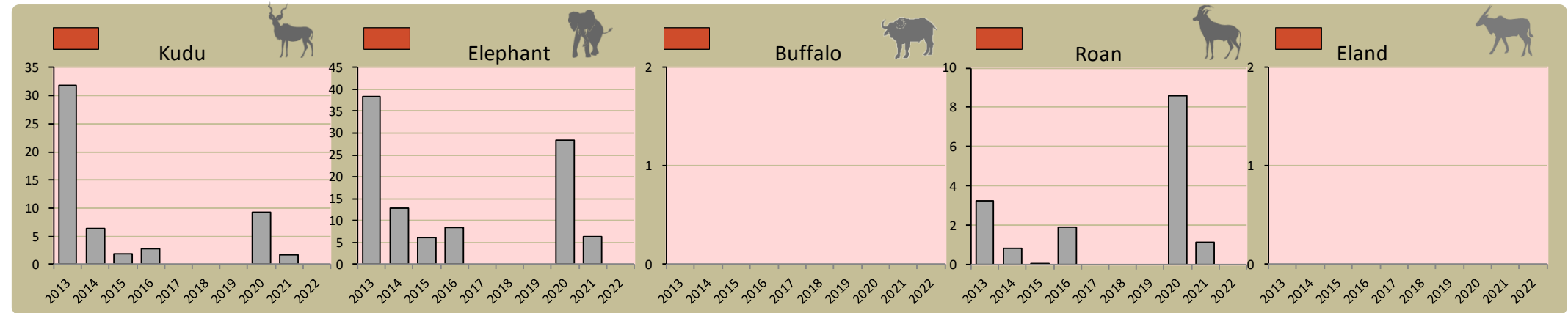


Kyaramacan Association:Omega



Fixed route patrols

charts show the number of sightings of each species per fixed route foot patrol each year  
Status barometers reflect the general sightings trend over the last 5 years

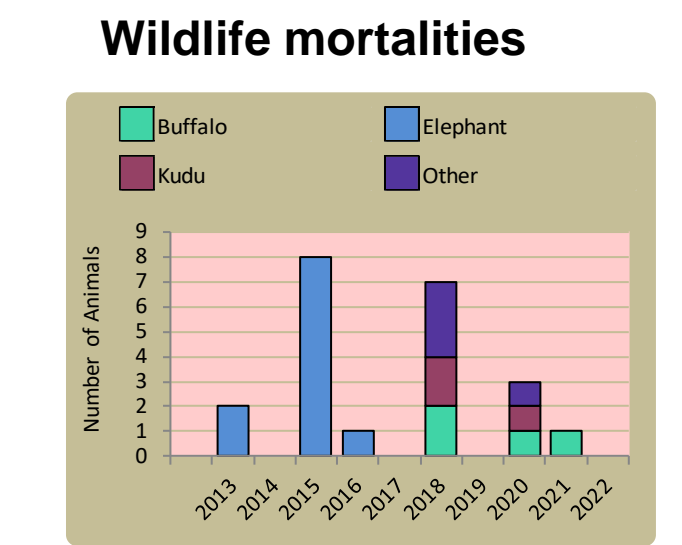
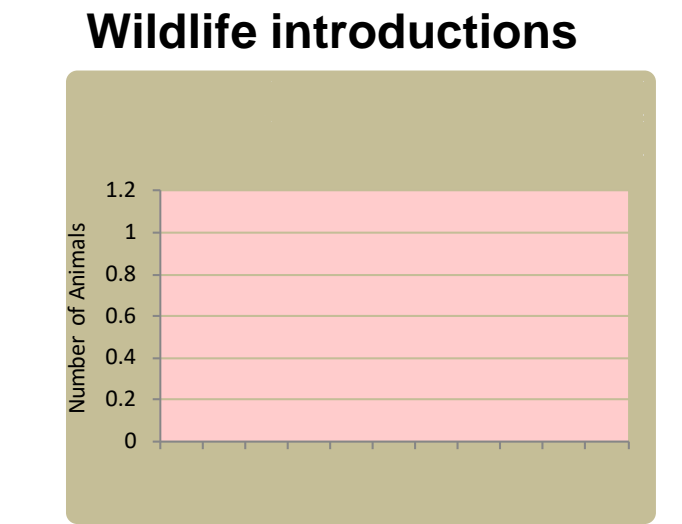
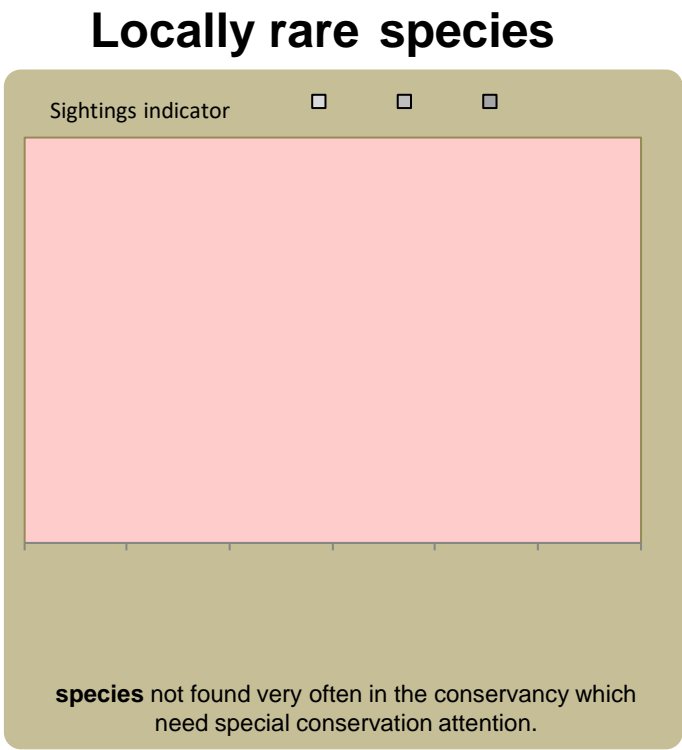
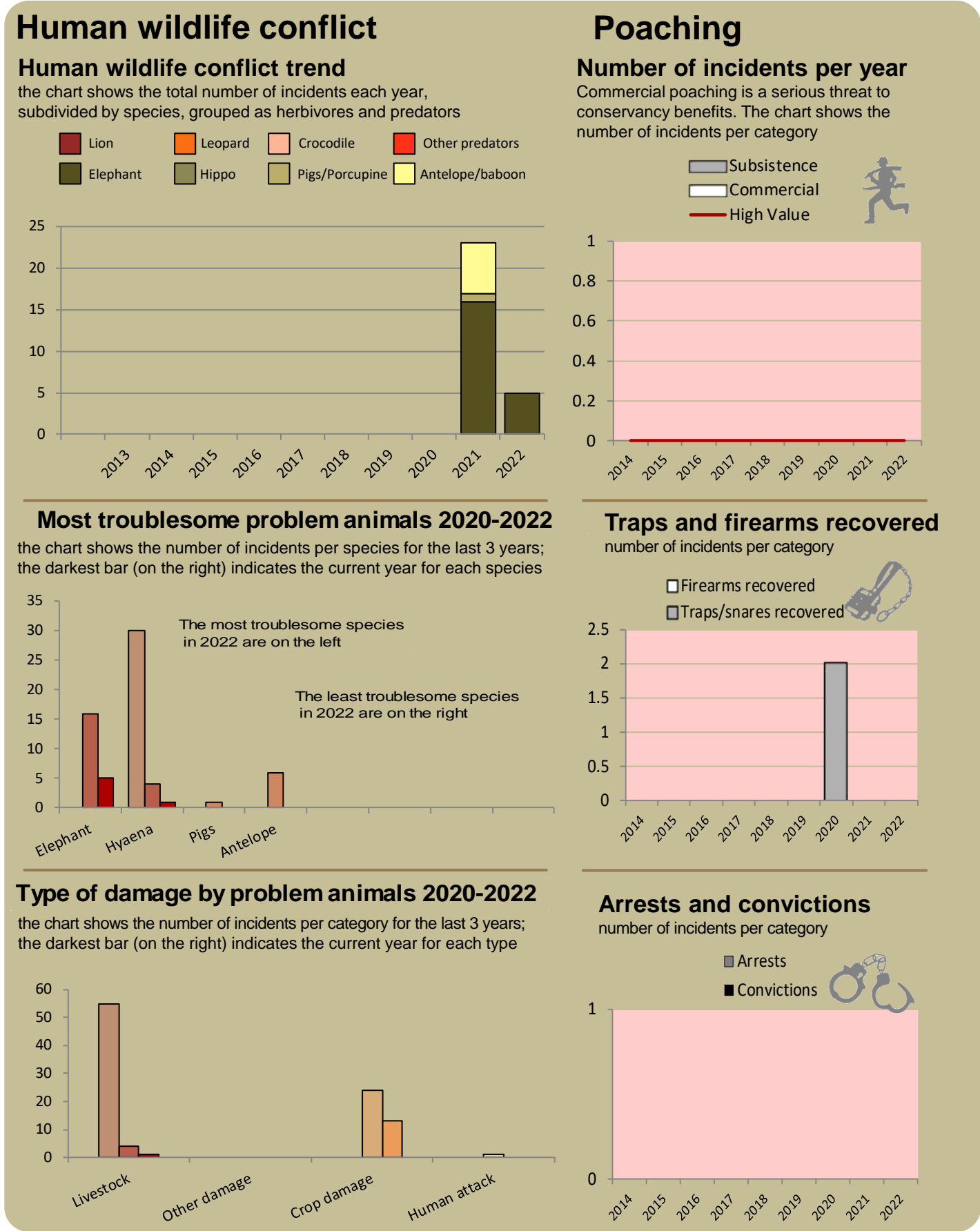


Wildlife provides a wide range of benefits. Some wildlife can cause conflicts, but all wildlife is of value to tourism, trophy hunting and a healthy environment.

By using all the available information and adapting and improving activities, threats such as human wildlife conflict, poaching and other issues can be minimised.

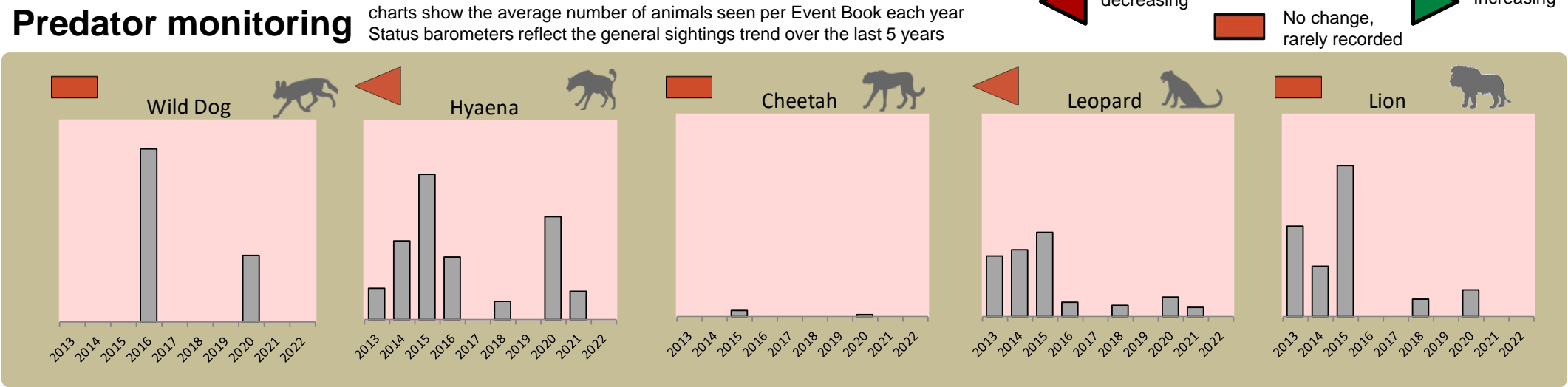
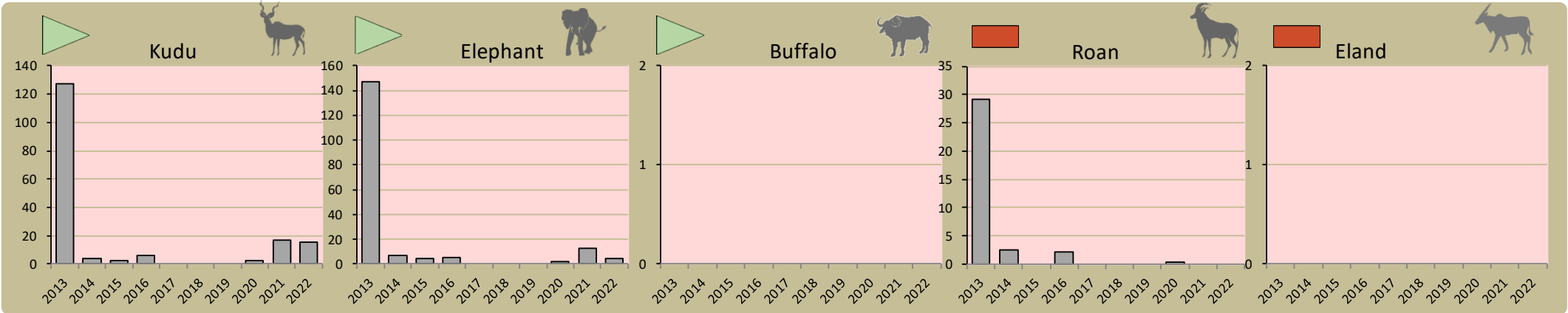


Kyaramacan Association:Omega 3



Fixed route patrols

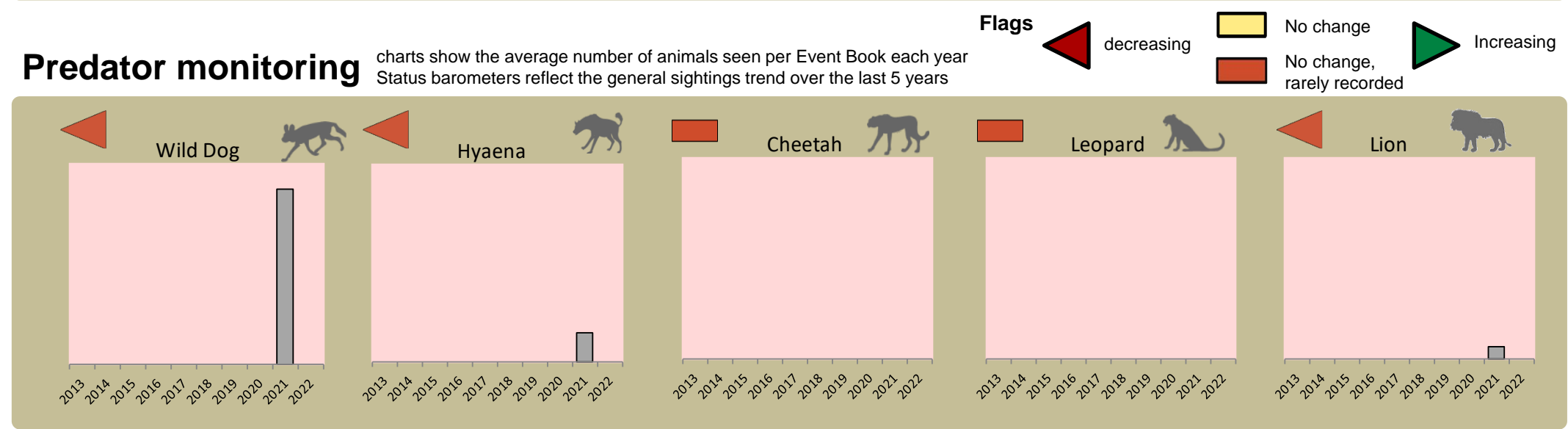
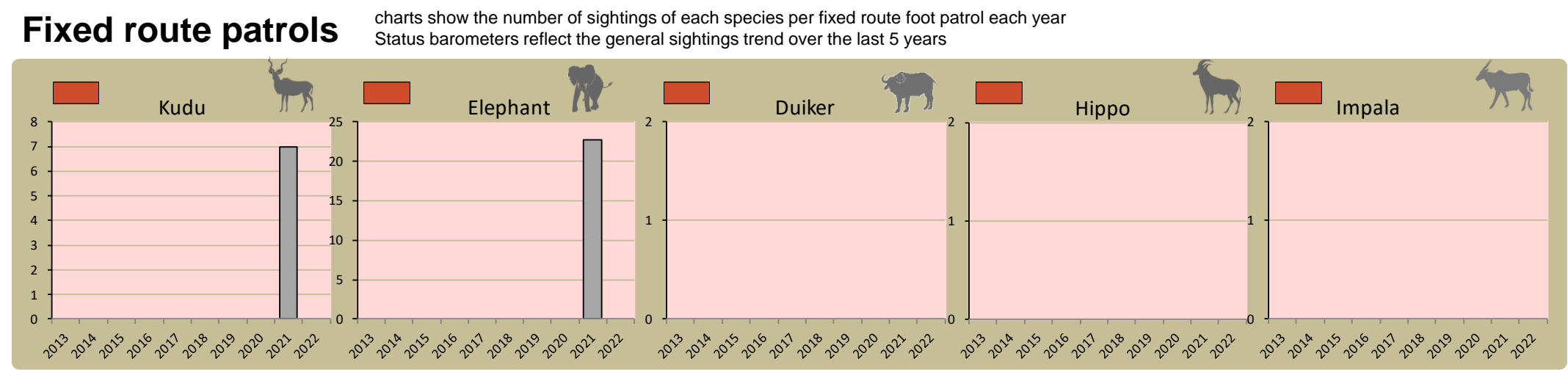
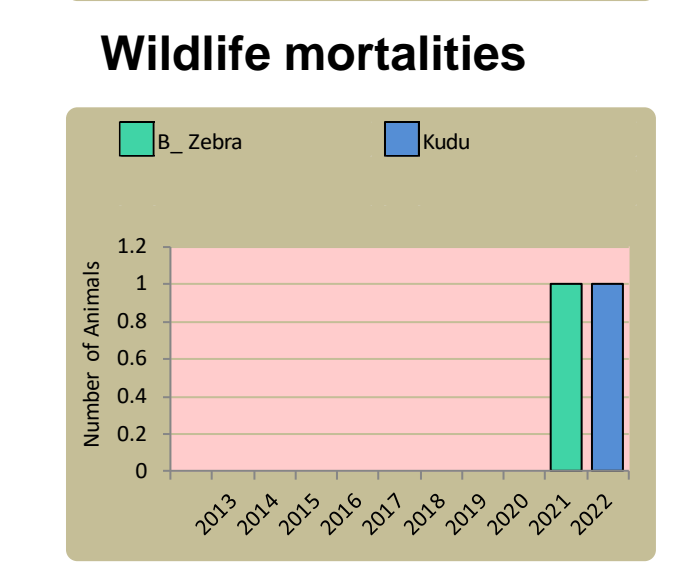
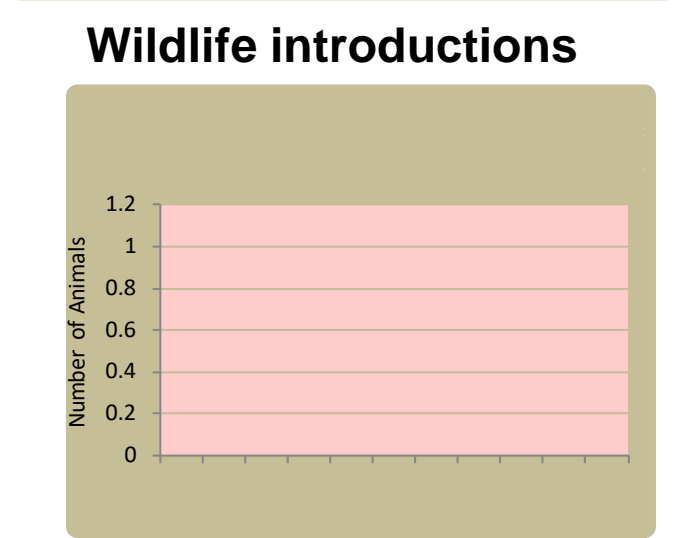
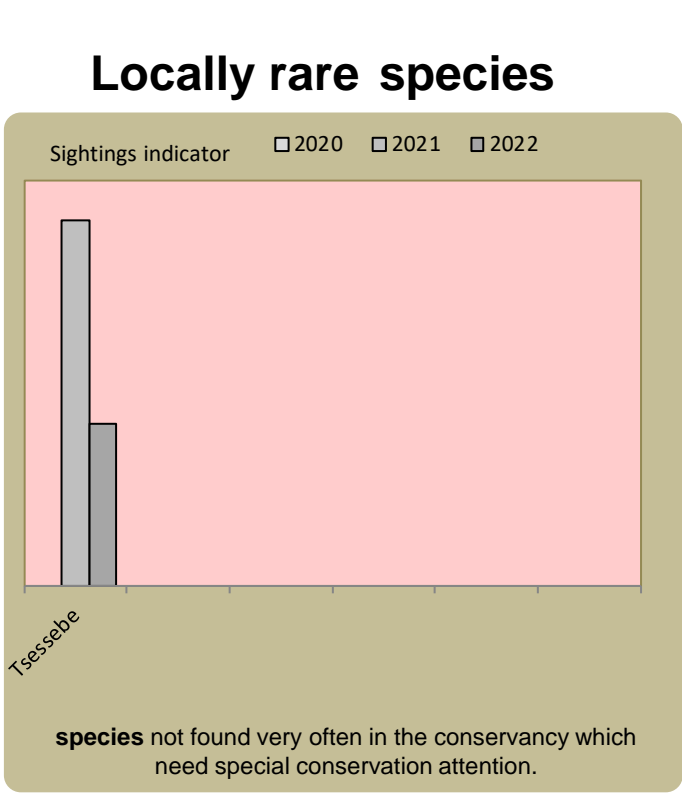
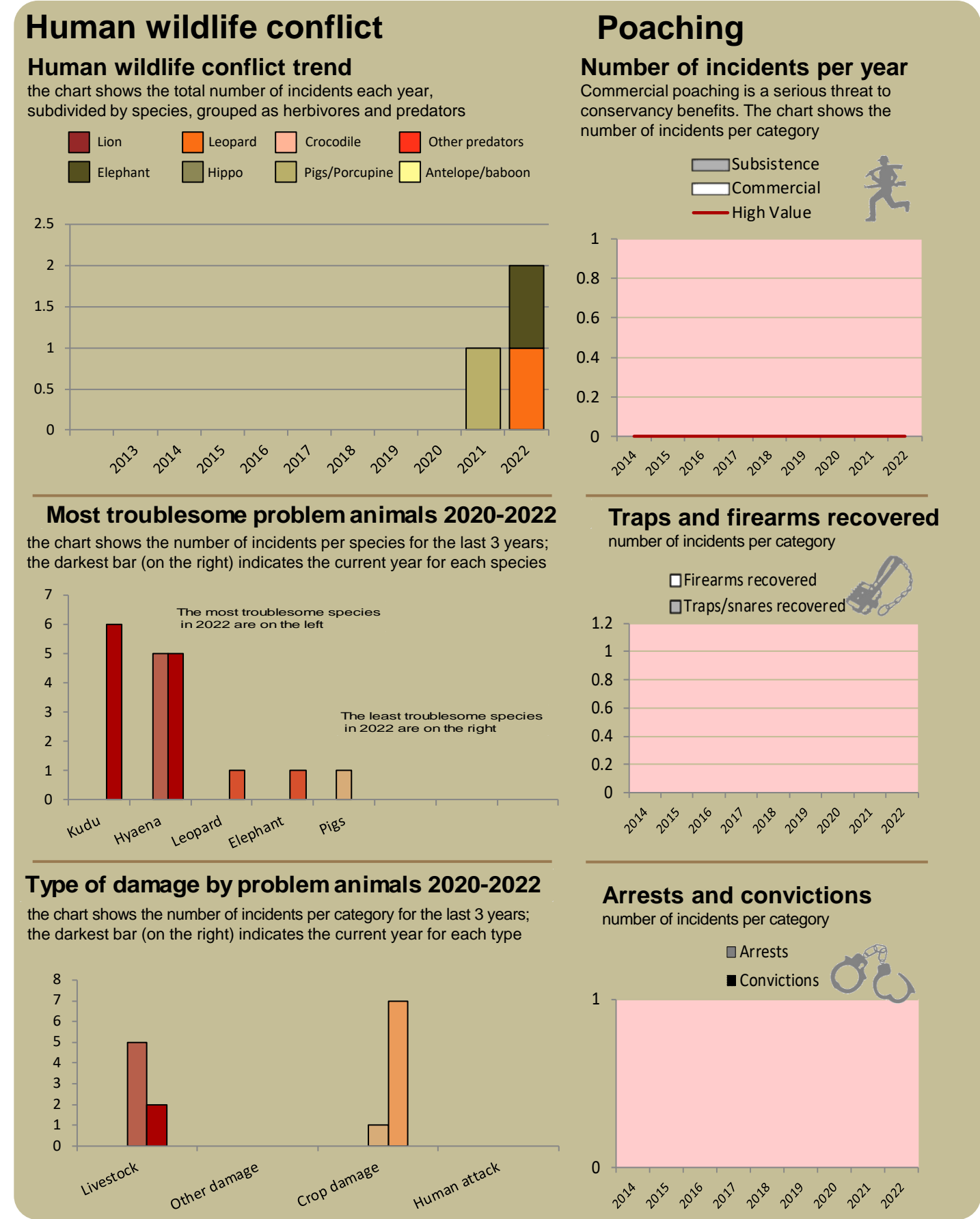
charts show the number of sightings of each species per fixed route foot patrol each year  
Status barometers reflect the general sightings trend over the last 5 years



Wildlife provides a wide range of benefits. Some wildlife can cause conflicts, but all wildlife is of value to tourism, trophy hunting and a healthy environment.

By using all the available information and adapting and improving activities, threats such as human wildlife conflict, poaching and other issues can be minimised.

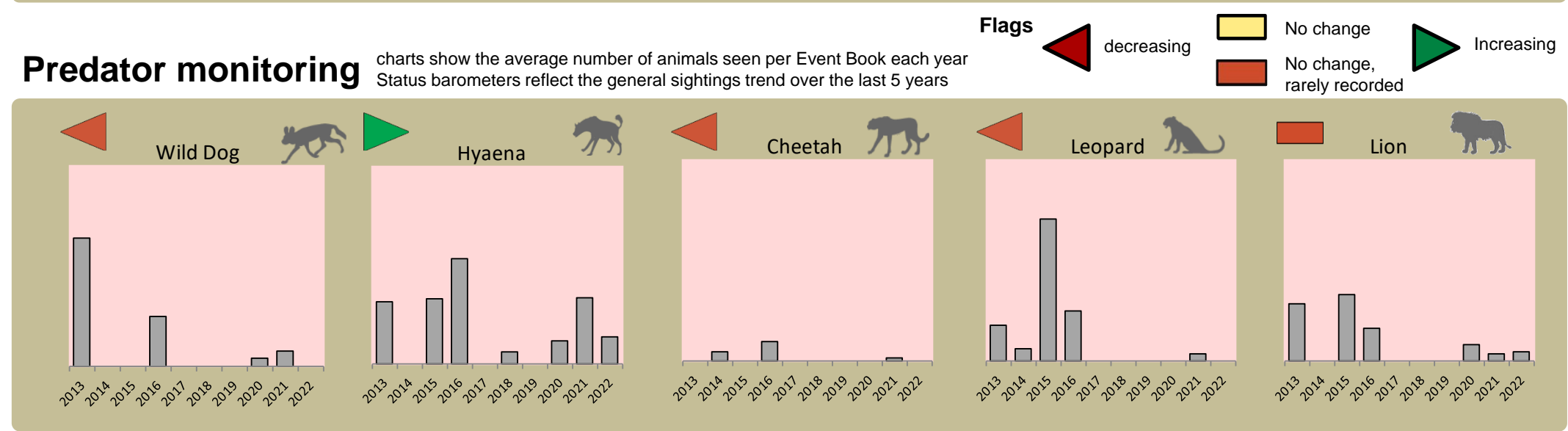
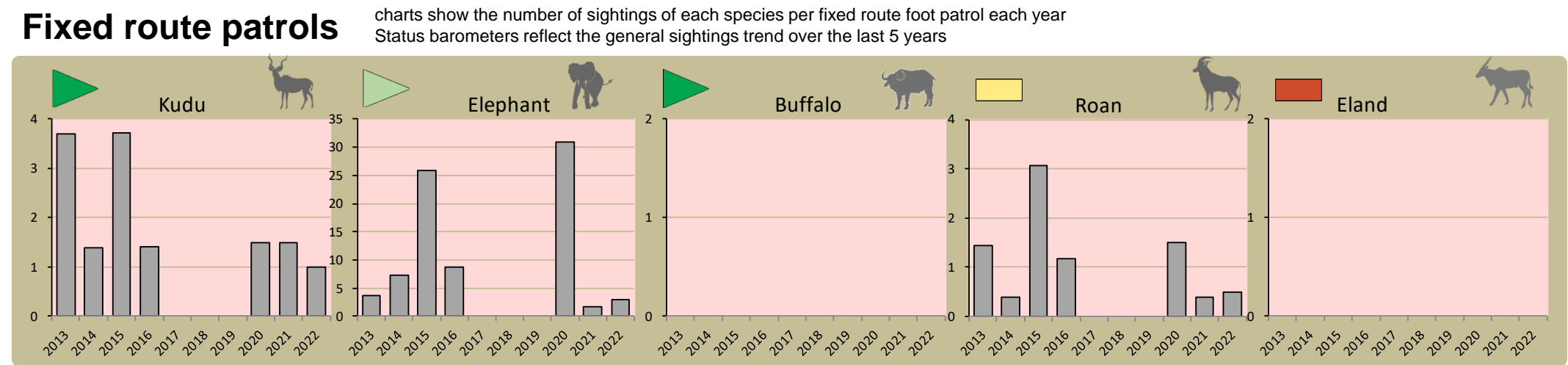
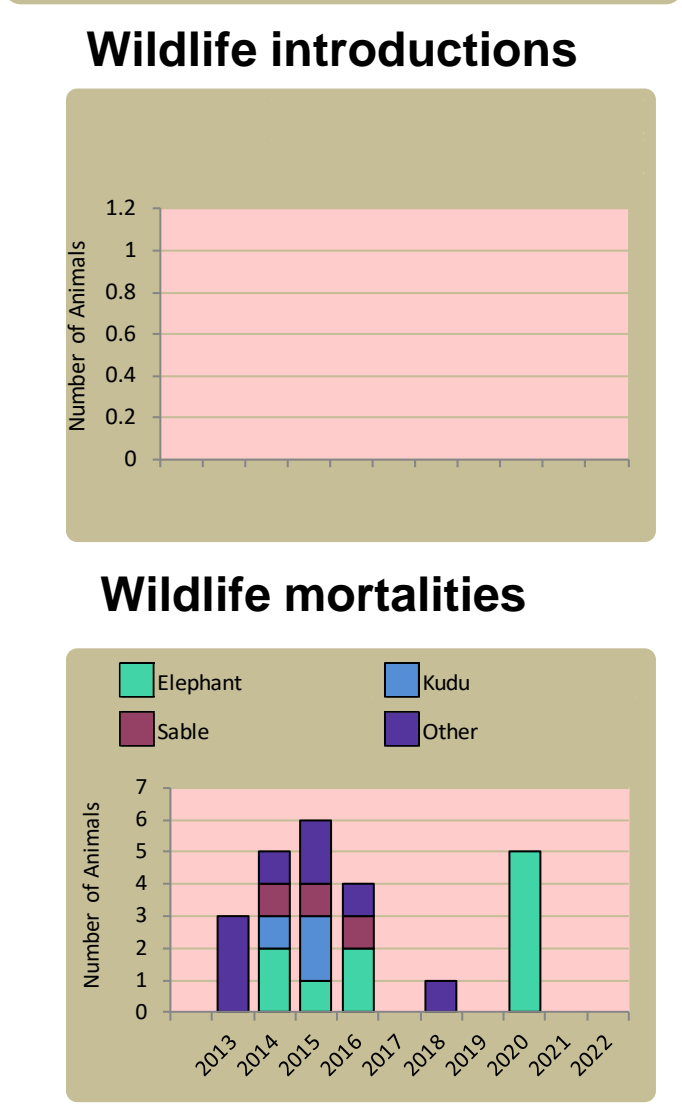
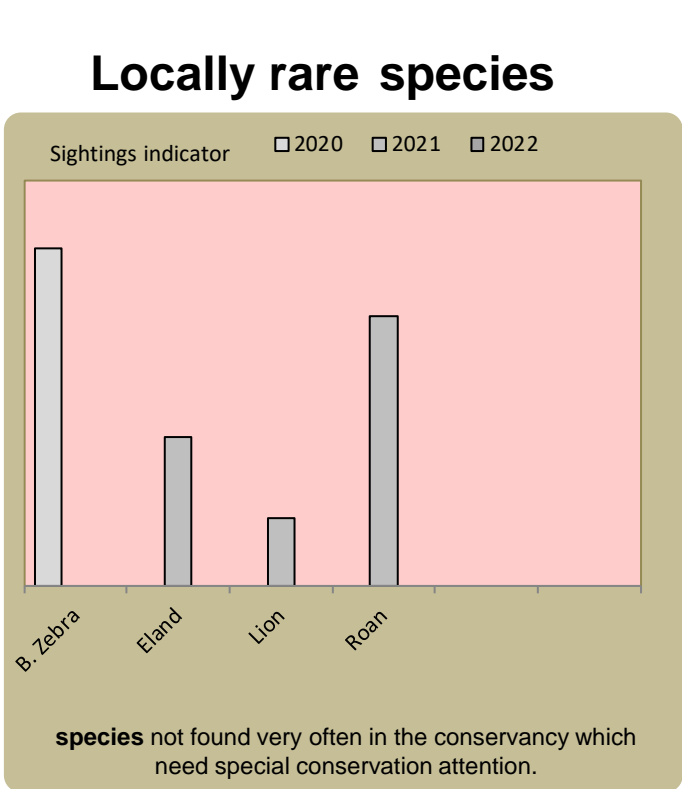
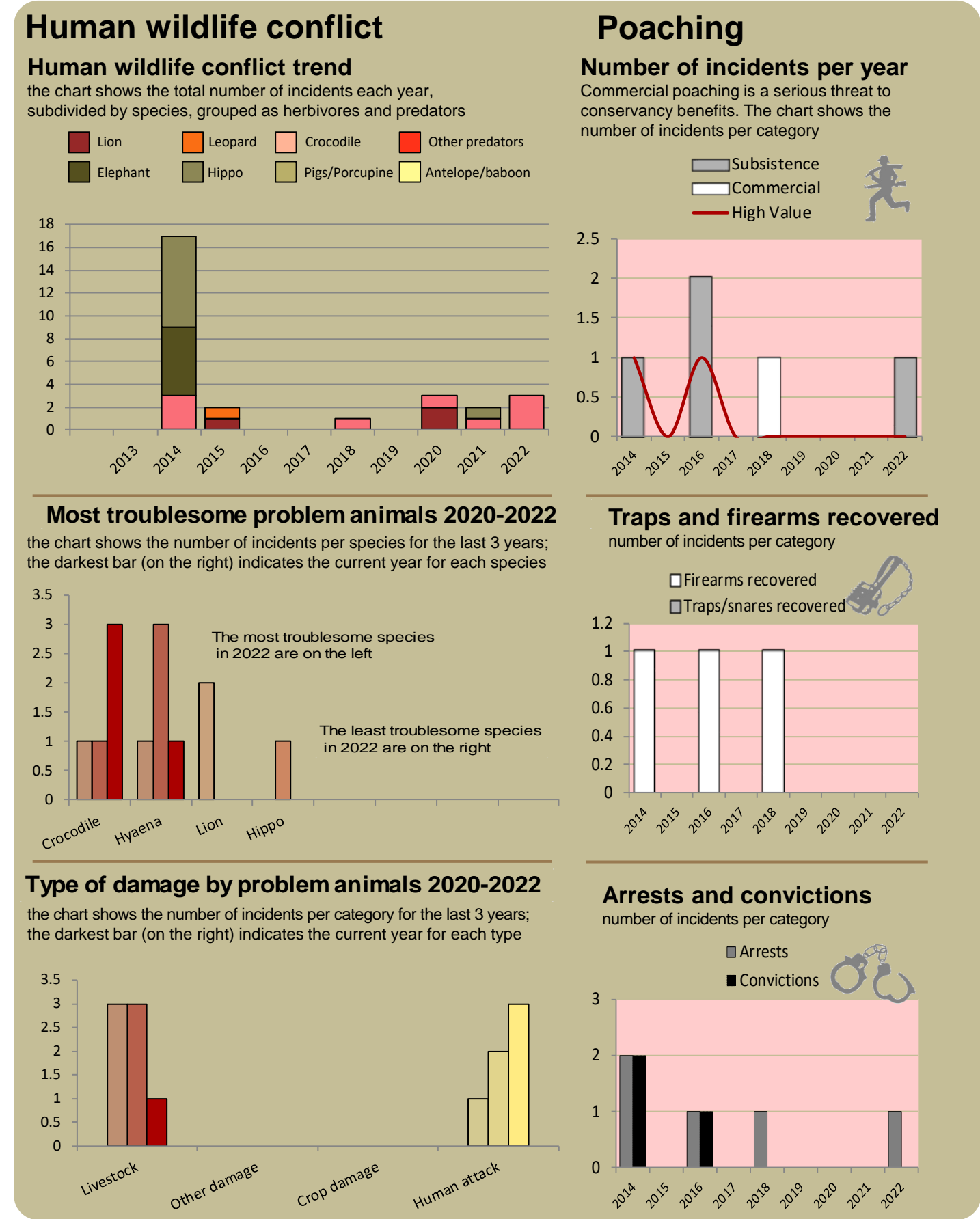
Kyaramacan Association: Masambo



Wildlife provides a wide range of benefits. Some wildlife can cause conflicts, but all wildlife is of value to tourism, trophy hunting and a healthy environment.

By using all the available information and adapting and improving activities, threats such as human wildlife conflict, poaching and other issues can be minimised.

Kyaramacan Association: Mutjiku



Wildlife provides a wide range of benefits. Some wildlife can cause conflicts, but all wildlife is of value to tourism, trophy hunting and a healthy environment.

By using all the available information and adapting and improving activities, threats such as human wildlife conflict, poaching and other issues can be minimised.

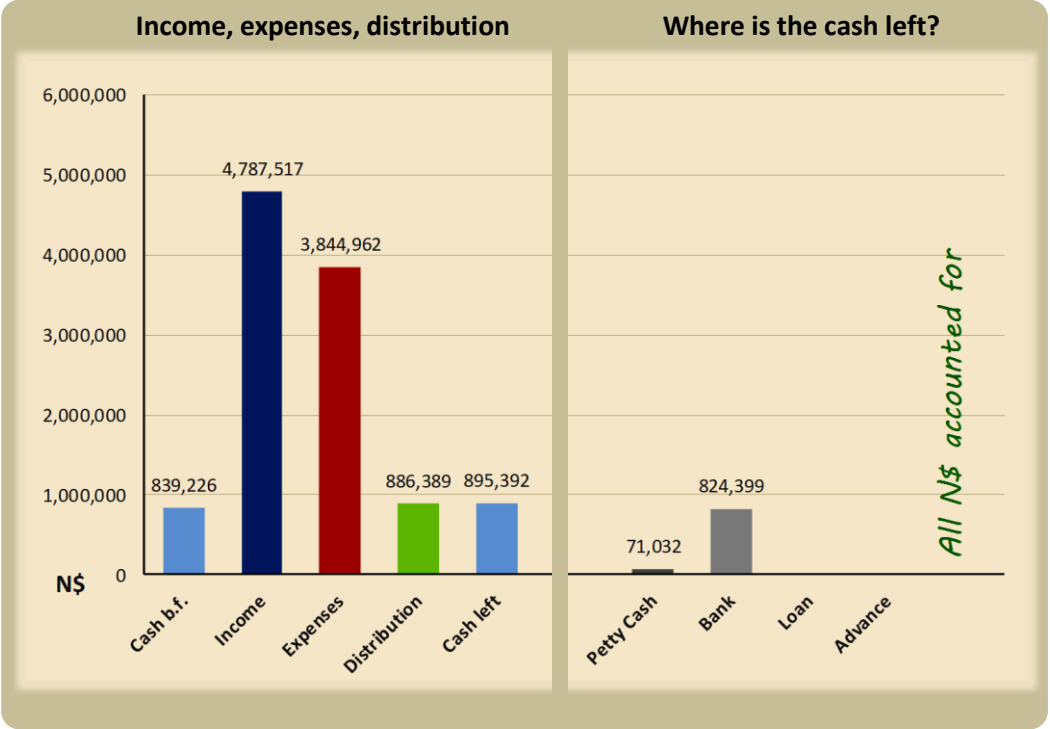
enabling equitable returns and benefit distribution...

Financial Year: 01/01/2022-31/12/2022

Sources of Income

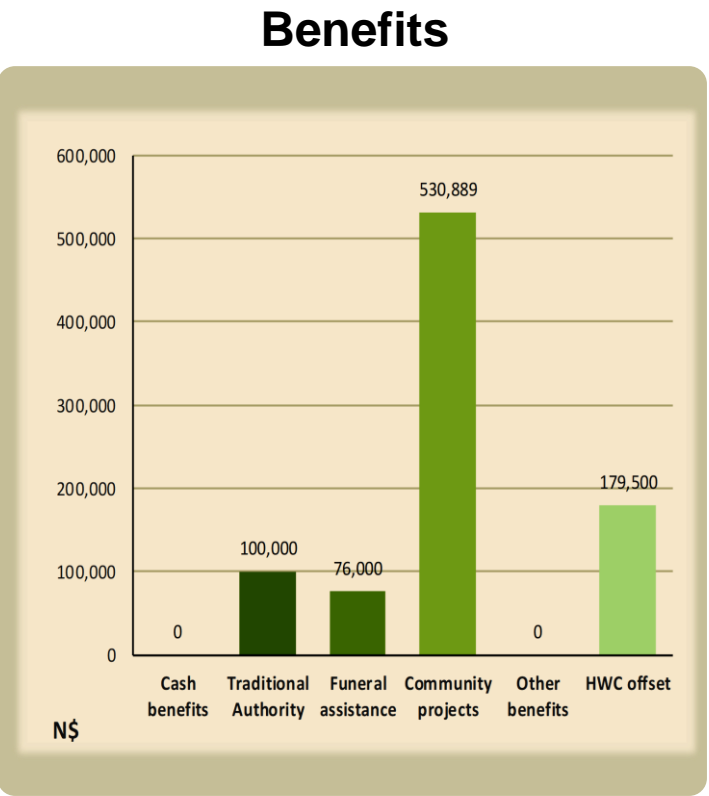
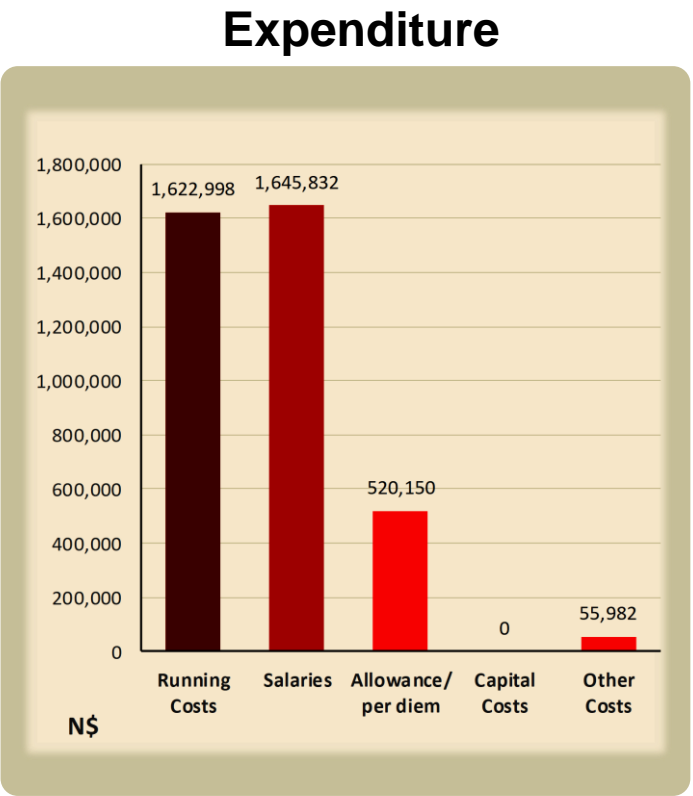
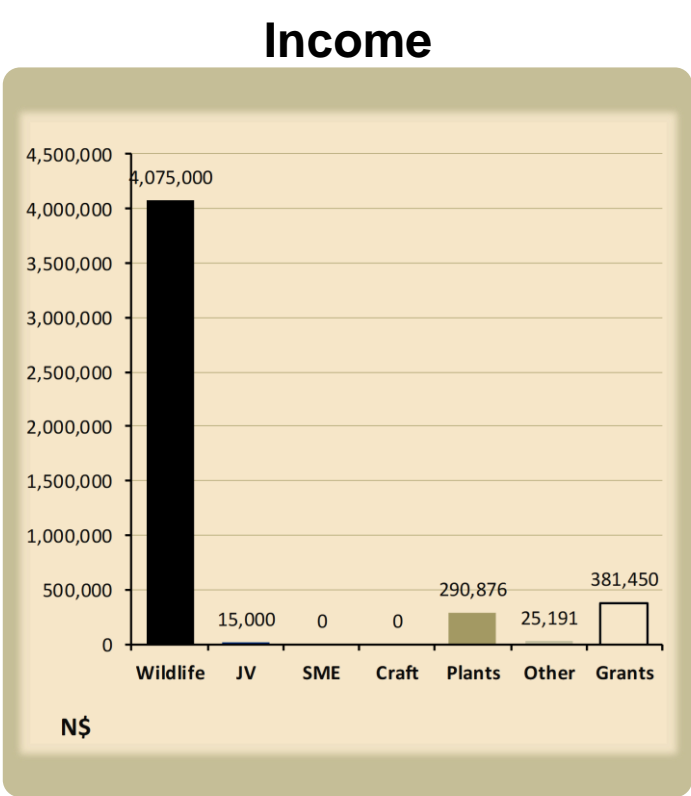
Income Type	Source	Amount
Wildlife Utilisation	Hunt Africa Concession	250,000
	Hunt Africa Concession	1,603,750
	Ndumo Hunting Safari cc	2,221,250
Joint Venture	White Sands Lodge and Campsite	15,000
Plant Utilisation	Devil's claw	290,876
Grants	Grants	83,750
	Grants	297,700
Other	Other income	8,600
	Other income	12,400
	Bank interest	831
	Other income	3,360
Grand Total		4,787,517

Financial Summary

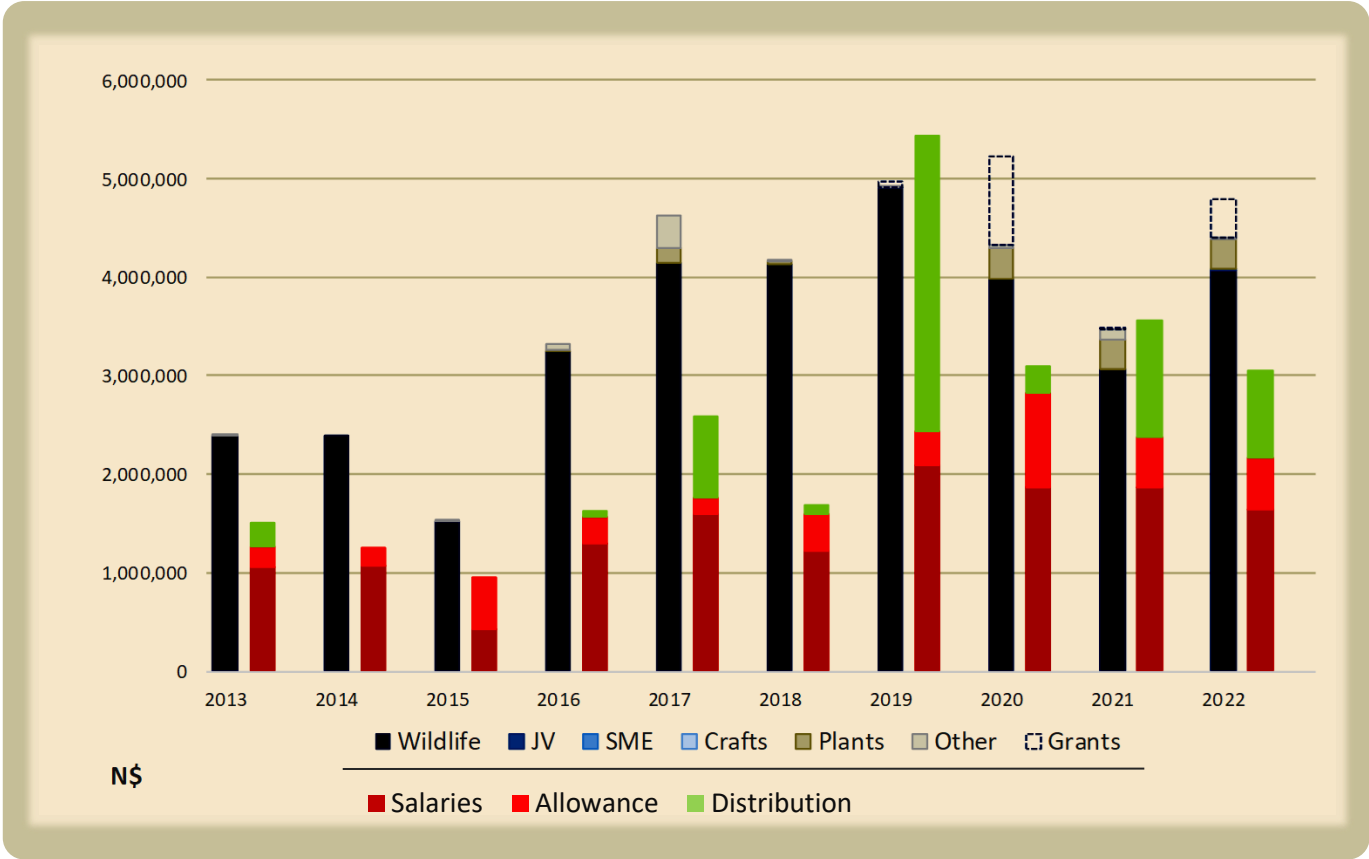


**Shortfall** = the amount of available cash is **less than** the ‘cash left’ according to the financial audit  
**Surplus** = the amount of available cash is **greater than** the ‘cash left’ according to the financial audit

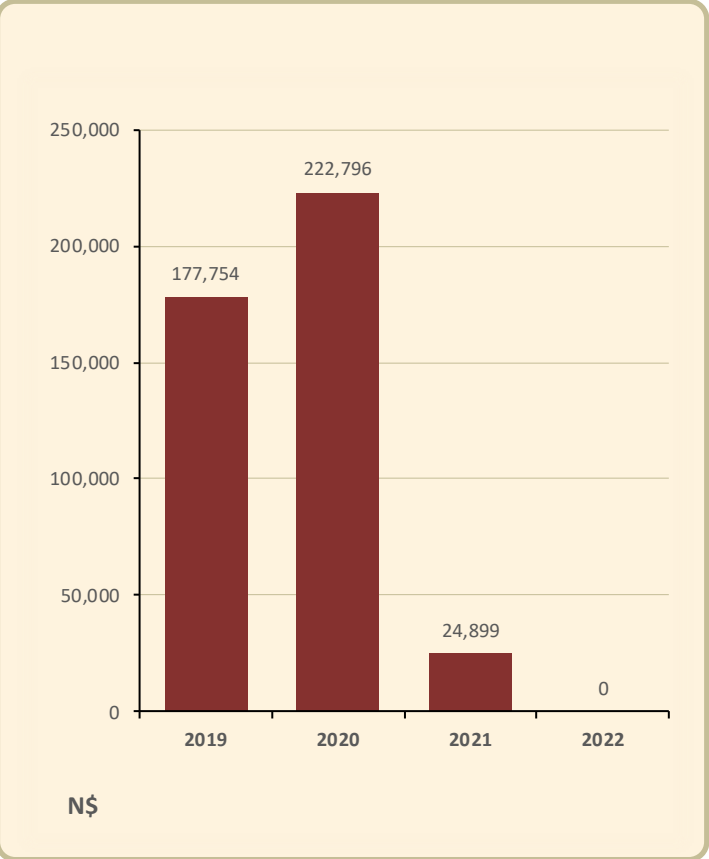
Summary of:



Income Trends



Unaccounted funds



Wildlife provides a wide range of benefits. Some wildlife can cause conflicts, but all wildlife is of value to tourism, trophy hunting and a healthy environment.

Conservancies reduce environmental costs while increasing environmental returns. Returns from wildlife can far outweigh human wildlife conflict costs.



## Enabling wise conservancy governance...

### Conservancy Statistics

Date Registered:	January 2006
Population (2011 census):	4660
Size (square kilometres):	4100
Registered members:	6000

### Key Compliance Requirements

Was an AGM held?	✓
Were elections held?	N/A
Were benefits distributed according to the BDP?	✓
Is game managed according to the GMUP?	✓
Was the financial report presented and approved?	✓

### Conservancy Governance

	Male	Female	Total
Number of management committee members	10	2	12
Attendance at AGM			240
Date of the last AGM:	17/12/2022		
Date of the next AGM:	Mar-23		
Other important issues			
Budget approved?	✓		
Work plan approved?	✓		
Annual conservancy report approved?	✓		

### Benefit Distribution

Type	Description	Beneficiary	Number
Community Devp.	Borehole Installation At One Village	Members	173
Social Benefits	Financial Support To Sport		
	Funeral Support		
Meat Distribution	Game Meat	Members	7000
Other Benefits	Hwc Offset	Members	55
	Ta Allowance	Ta	16

### Employment

	Male	Female	Total
Conservancy staff (Incl. CGG & CRM)	49	23	72
Number of Community Game Guards	17	26	43
Number of Community Resource Monitors			

### Governance Performance Rating

How well did the conservancy perform in the past year?

<i>Performance Category</i>	<i>This Year</i>	<i>Prev. Year</i>	<i>Explanation of performance category</i>
<b>Member engagement</b>			The conservancy is adequately engaging its members
<b>Benefit planning</b>			The conservancy developed its BDP in a transparent and participatory manner
<b>Benefit distribution</b>			The conservancy distributes benefits to its members in a fair, transparent and equitable manner
<b>Accountability</b>			Conservancy members are holding the management committee accountable
<b>Stakeholder engagement</b>			The conservancy maintains relationships with key external stakeholders
<b>Financial management</b>			The conservancy is effectively managing its finances

Colour codes:

none

weak

moderate

strong

exceptional

N/A