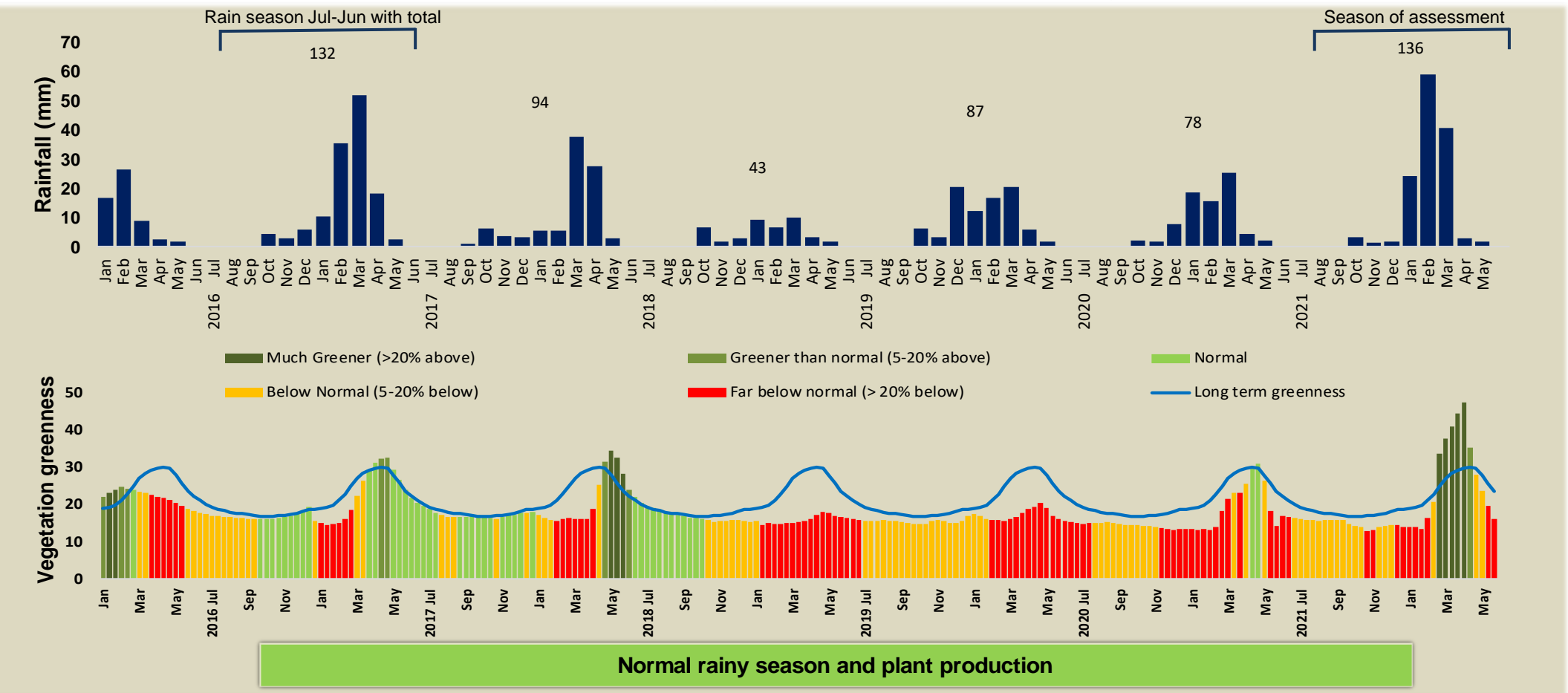


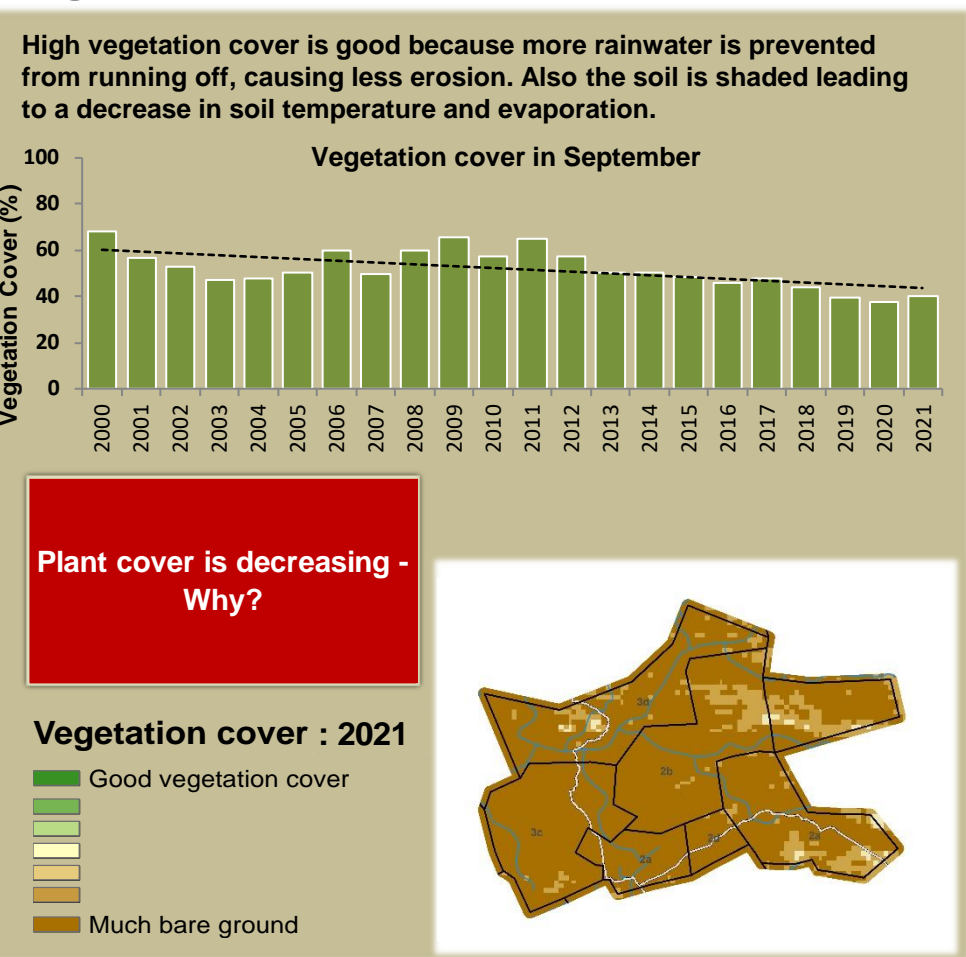


## Adapting in response to the current environmental conditions ...

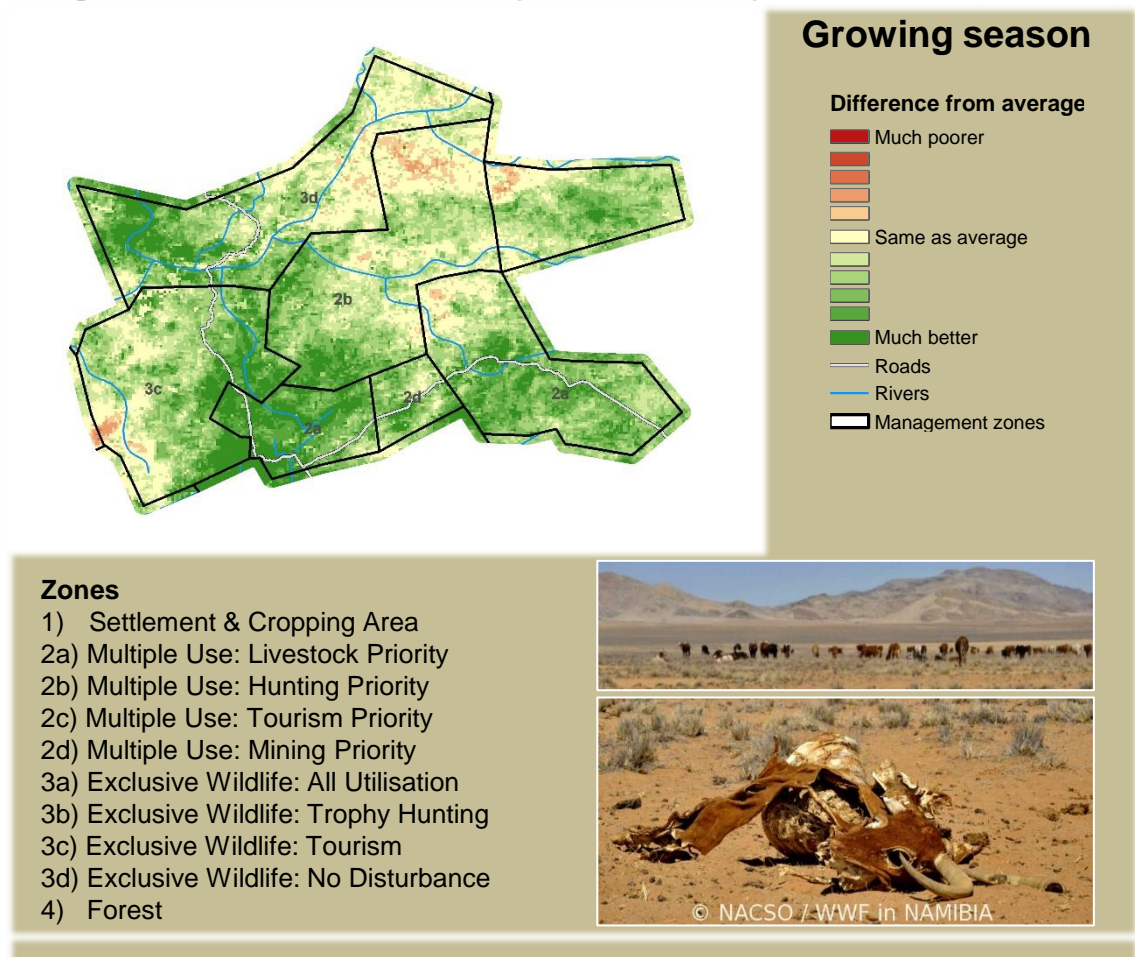
### Seasonal trends in rainfall and vegetation (2021 / 2022 Season)



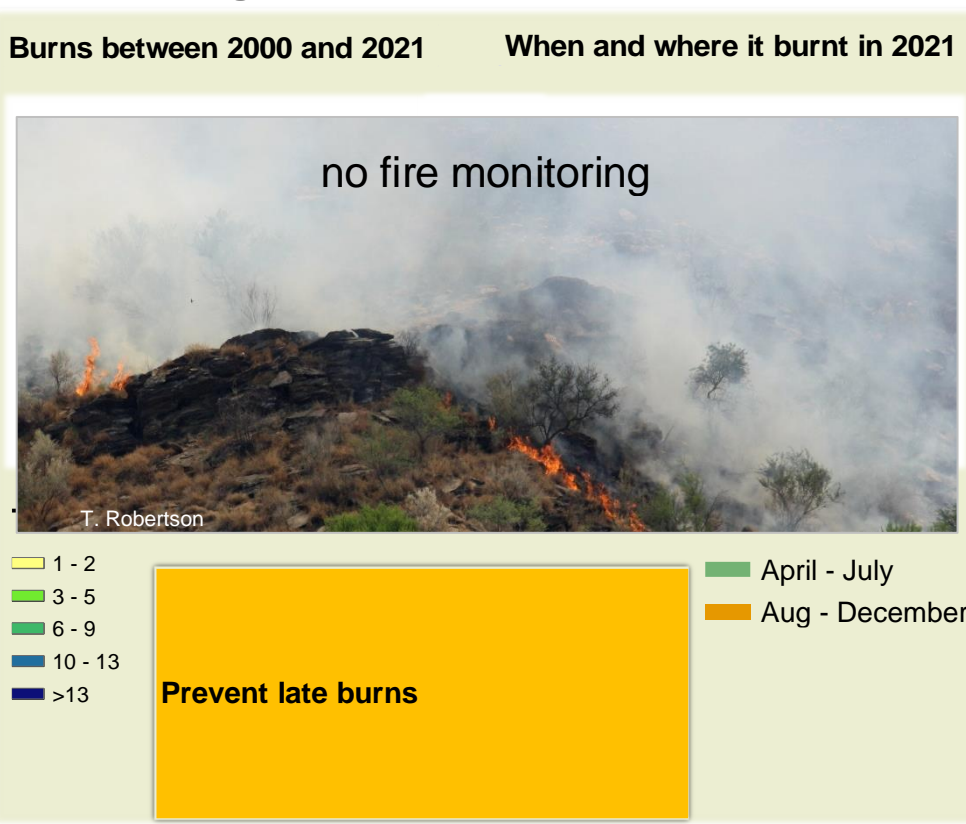
### Vegetation cover trend (2000 - 2021)



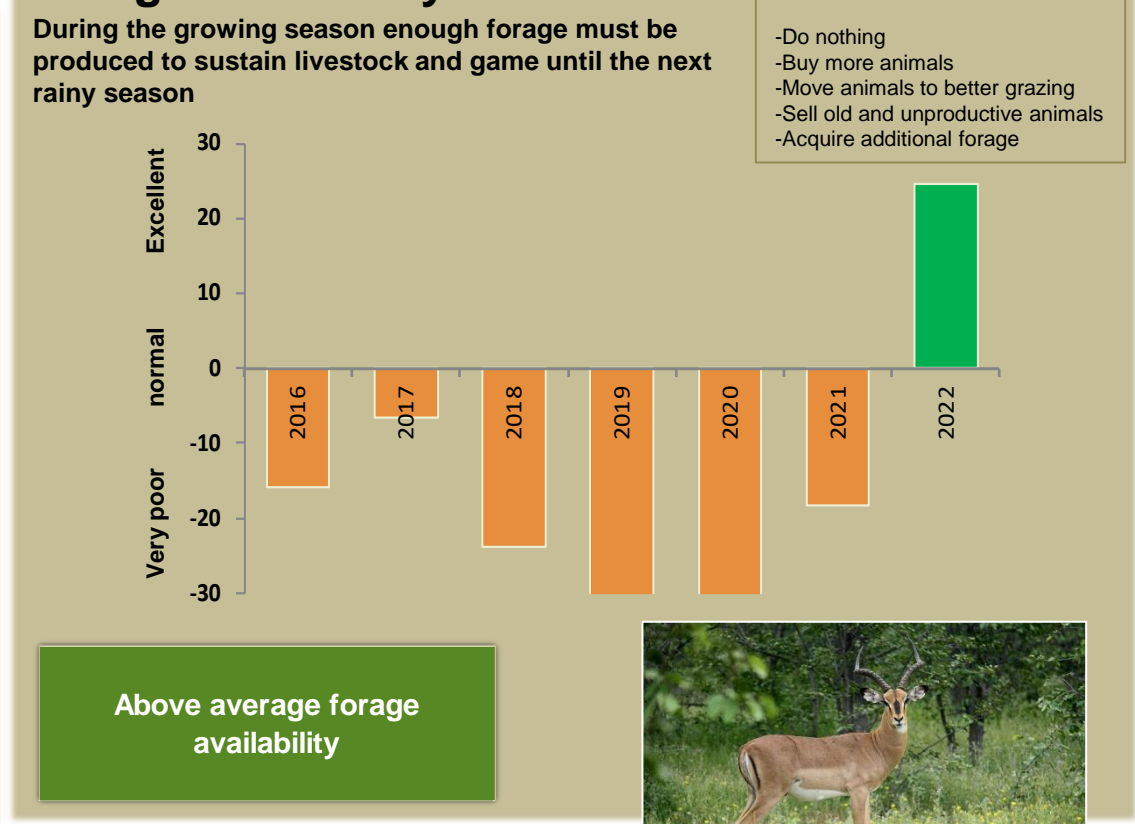
### Vegetation productivity (February to April) 2022



### Fire management



### Forage availability



Climate and vegetation patterns assist in our understanding of the status of wildlife and livestock in the conservancy for the effective management of these resources.