

# GAME COUNTS IN HARDAP GAME PARK

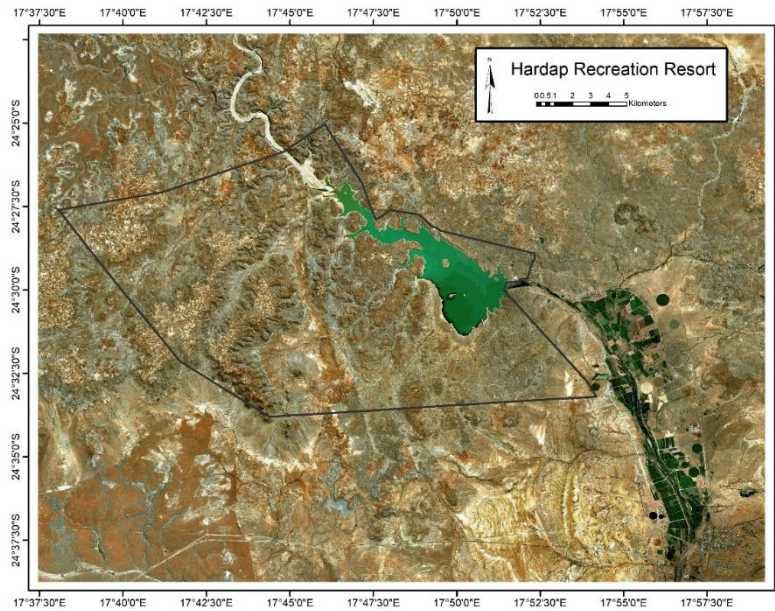
A collaboration between NACSO, MEFT and environmental NGOs

## May 2024

### Population Estimates

Species	Estimate	Lower 95% CL	Upper 95% CL	Model
Gemsbok	93	44	198	U
Kudu	41	14	119	HN
Ostrich	10	2	50	HN
Springbok	345	149	796	U
Hartmann's Zebra	68	26	177	U

Estimates were calculated using DISTANCE. Model selection: U = uniform key; HN = half normal



### Animals seen in this count:

Total Route km	100
Number of routes	2
Total park area (km <sup>2</sup> )	243

Count area  
23,800 ha

Species	Total	Route 1	Route 2
Baboon	16	12	4
Gemsbok	56	18	38
Giraffe	16	14	2
Jackal			
Klipspringer			
Kudu	16		16
Ostrich	2		2
Springbok	63	11	52
Steenbok	6	5	1
Warthog			
Hartmann's Zebra	17	1	16

### Total numbers seen per year



Species	2005	2006	2007	2008	2009	2010	2011	2012	2013	2014	2015	2016	2017	2018	2019	2020	2021	2022	2023	2024
Baboon					16	17		7	17	62		84	17	3	4	31	27	4	12	16
Gemsbok	47	129	77	113	237	205	178	225	393	206	603	480	427	248	85	19	65	50	63	56
Giraffe											2	10	13	13	8	26		14	14	16
Jackal, BB	3	6	3	8	7	2	3	11	4	5	4	10	7	4	4	5	1		1	
Klipspringer		2																		
Kudu	66	55	34	36	56	18	40	46	72	19	5	22	27	25	5	7	1	9	1	16
Ostrich	78	160	82	40	48	44	63	51	82	27	93	49	62	53	6	26			2	2
Springbok	379	606	322	372	390	581	676	454	351	222	234	402	455	445	310	380	176	206	107	63
Steenbok	16	4	4	4	5	2	4		3	4	5	6	1	2	6		4		8	6
Warthog	3	6	9	5	6	4	2	29	22	14	18	11	6	4		2	4			
Zebra, Hartmann's	6	12	18	16	43	26	108	38	93	14	50	156	80	75	51	26	82	55	29	17

### Trends: animals per 100km

