

maximising wildlife returns by minimising threats...

Performance Indicators

Management performance in 2020

Category	Performance		
1 Adequate staffing			
2 Adequate expenditure			
3 Audit attendance			
4 NR management plan			
5 Zonation			
6 Leadership			
7 Display of material			
8 Event Book modules			
9 Event Book quality			
10 Compliance			
11 Game census			
12 Reporting & adaptive management			
13 Law enforcement			
14 Human Wildlife Conflict			
15 Harvesting management			
16 Sources of NR income			
17 Benefits produced			
18 Resource trends			
19 Resource targets			

Key to performance indicators

weak/bad

reasonable

good

Performance is assessed on a scoring system from zero (none) to a maximum of between 3 and 6 (strong/excellent) depending on the indicator.

Indicators 1-17 reflect the performance of the management team in place in the conservancy and an efficient team can achieve a good rating in all 17 indicators.

Indicators 18 & 19 are influenced by external factors and are not considered a reflection of conservancy management. They indicate the current status of wildlife in the conservancy in relation to a theoretical optimal situation.

Human wildlife conflict

Human wildlife conflict trend

the chart shows the total number of incidents each year, subdivided by species, grouped as herbivores and predators

Most troublesome problem animals 2018-2020

the chart shows the number of incidents per species for the last 3 years; the darkest bar (on the right) indicates the current year for each species

Type of damage by problem animals 2018-2020

the chart shows the number of incidents per category for the last 3 years; the darkest bar (on the right) indicates the current year for each type

Poaching

Number of incidents per year

Commercial poaching is a serious threat to conservancy benefits. The chart shows the number of incidents per category

Traps and firearms recovered

number of incidents per category

Arrests and convictions

number of incidents per category

Wildlife removals – quota use and value

<div>Potential value estimates (N\$) for a single animal:</div> <div>• Potential trophy value - the average trophy value for that species in the conservancy landscape</div> <div>trophy values vary depending on trophy quality, international recognition of the hunting operator and the hunting area</div> <div>• Potential other use value - the average meat value for common species</div> <div>or</div> <div>the average live sale value of each high value species (indicated with an *). High value species are never used for meat</div> <div>Fractions of animals indicate that a quota of 1 animal was awarded with conditions i.e.</div> <div>a) over a period of several years and/or</div> <div>b) is shared with other conservancies</div>	Species	Quota 2020			Animals actually used in 2020						Potential	
		Total	Trophy	Other Use	Trophy	Own Use & Premium	Shoot & Sell	Capture & Sale	Problem Animal	Total Use	Trophy Value N\$	Other use Value N\$
	Duiker	5	1	4							1,900	189
	Eland *	1	1									6,964
	Elephant *	0.33	0.33								220,800	90,000
	Kudu*	2	1	1							5,900	10,842
	Leopard	0.33	0.33								37,900	
	Steenbok	2	2								3,500	
	Warthog	2	2								2,300	

monitoring numbers and trends for a healthy conservancy...

Current wildlife numbers and status

Species	Animals Seen 2020	Estimated population range	Wildlife Status		
			Count Trend	National Guideline	Desired Status
Duiker					
Elephant					
Gemsbok					
Giraffe					
Jackal					
Klipspringer					
Kudu					
Mtn. zebra					
Ostrich					
Springbok					

Desired Number – gives the species status in the conservancy based on what the conservancy would like to have.

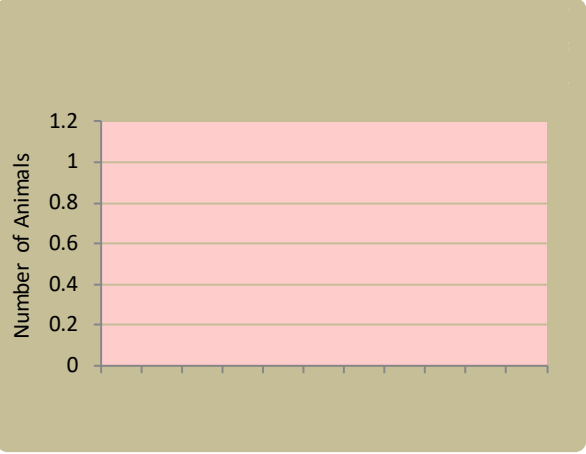
dark green (abundant) – reduce a lot;
light green (common) – reduce a little;
yellow (uncommon) – keep numbers the same;
light orange (rare) – double numbers;
dark orange (very rare) – more than double numbers.

Wildlife status summary in 2020

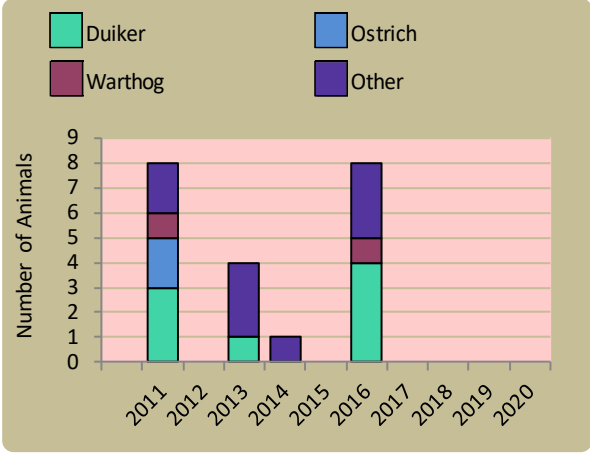
Key to wildlife status

extinct	very rare	rare	uncommon	common	abundant

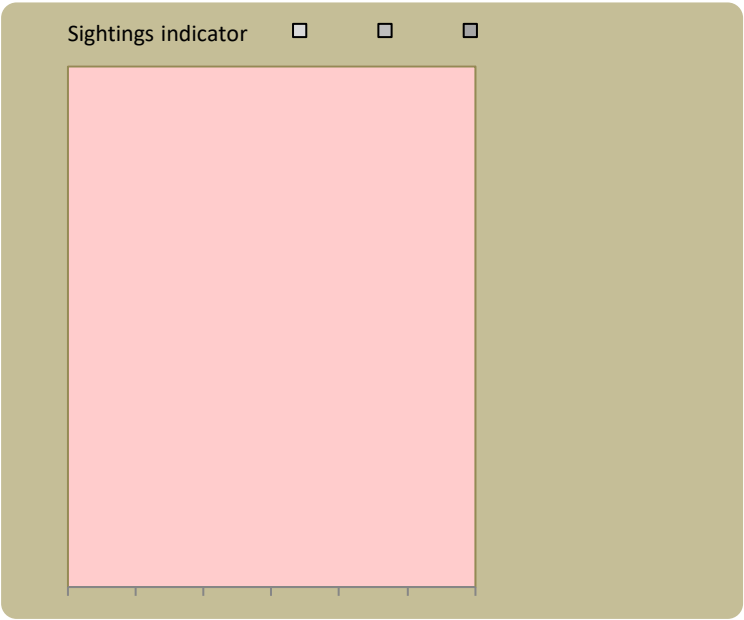
Wildlife introductions



Wildlife mortalities

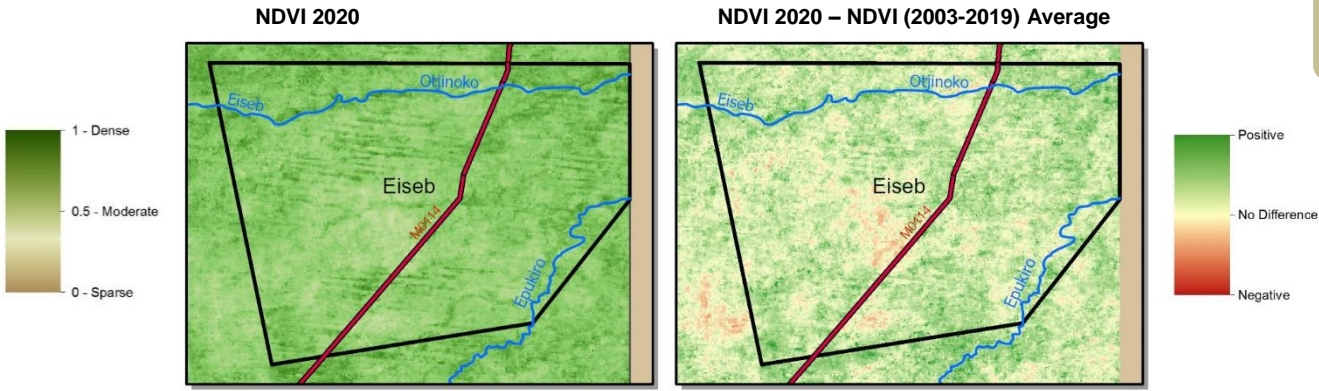


Locally rare species



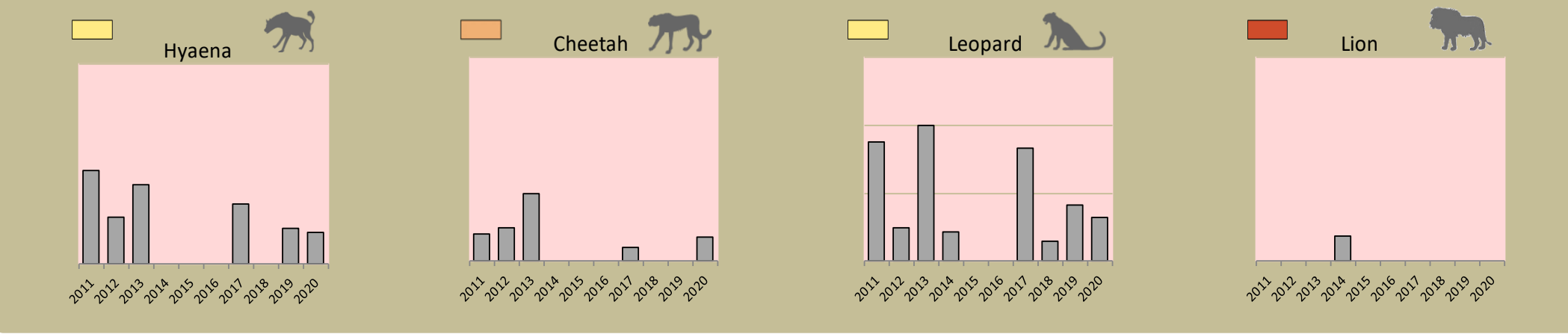
Vegetation

Green vegetation index (NDVI). Maps show vegetation cover during Feb-Apr of the current year and the difference between the current year and the long-term average (2003-2019)



Predator monitoring

charts show the average number of animals seen per Event Book each year status barometers reflect the general sightings trend over the last 5 years



Wildlife provides a wide range of benefits. Some wildlife can cause conflicts, but all wildlife is of value to tourism, trophy hunting and a healthy environment. By using all the available information and adapting and improving activities, threats such as human wildlife conflict, poaching and other issues can be minimised.

Enabling wise conservancy governance...




Conservancy Statistics

Date Registered:	March 2009
Population (2011 census):	1360
Size (square kilometres):	6626
Registered members:	118

Key Compliance Requirements

Was an AGM held?	✓
Were elections held?	✓
Were benefits distributed according to the BDP?	✗
Is game managed according to the GMUP?	✓
Was the financial report presented and approved?	✓

Conservancy Governance

	Male	Female	Total
Number of management committee members	6	6	12
Attendance at AGM	61	20	81
Date of the last AGM:	28/11/2020		
Date of the next AGM:	Nov-21		
Other important issues			
Budget approved?			
Work plan approved?			
Annual conservancy report approved?			

Benefit Distribution

Type	Description	Beneficiary	Number
------	-------------	-------------	--------

Employment

	Male	Female	Total
Conservancy staff (Incl. CGG & CRM)	11		11
Number of Community Game Guards	10		10
Number of Community Resource Monitors			

Governance Performance Rating How well did the conservancy perform in the past year?

<i>Performance Category</i>	<i>This Year</i>	<i>Prev. Year</i>	<i>Explanation of performance category</i>
1 Member engagement			The conservancy is adequately engaging its members
2a Benefit planning			The conservancy developed its BDP in a transparent and participatory manner
2b Benefit distribution			The conservancy distributes benefits to its members in a fair, transparent and equitable manner
3 Accountability			Conservancy members are holding the management committee accountable
4 Compliance			The conservancy is compliant with the standard operating procedures (SOPs)
5 Stakeholder engagement			The conservancy maintains relationships with key external stakeholders
6 Financial management			The conservancy is effectively managing its finances

Colour codes:

none

weak

moderate

strong

exceptional

N/A