

maximising wildlife returns by minimising threats...

Performance Indicators

Management performance in 2020

| Category | Performance |
|------------------------------------|-------------|
| 1 Adequate staffing | |
| 2 Adequate expenditure | |
| 3 Audit attendance | |
| 4 NR management plan | |
| 5 Zonation | |
| 6 Leadership | |
| 7 Display of material | |
| 8 Event Book modules | |
| 9 Event Book quality | |
| 10 Compliance | |
| 11 Game census | |
| 12 Reporting & adaptive management | |
| 13 Law enforcement | |
| 14 Human Wildlife Conflict | |
| 15 Harvesting management | |
| 16 Sources of NR income | |
| 17 Benefits produced | |
| 18 Resource trends | |
| 19 Resource targets | |

Key to performance indicators

weak/bad

reasonable

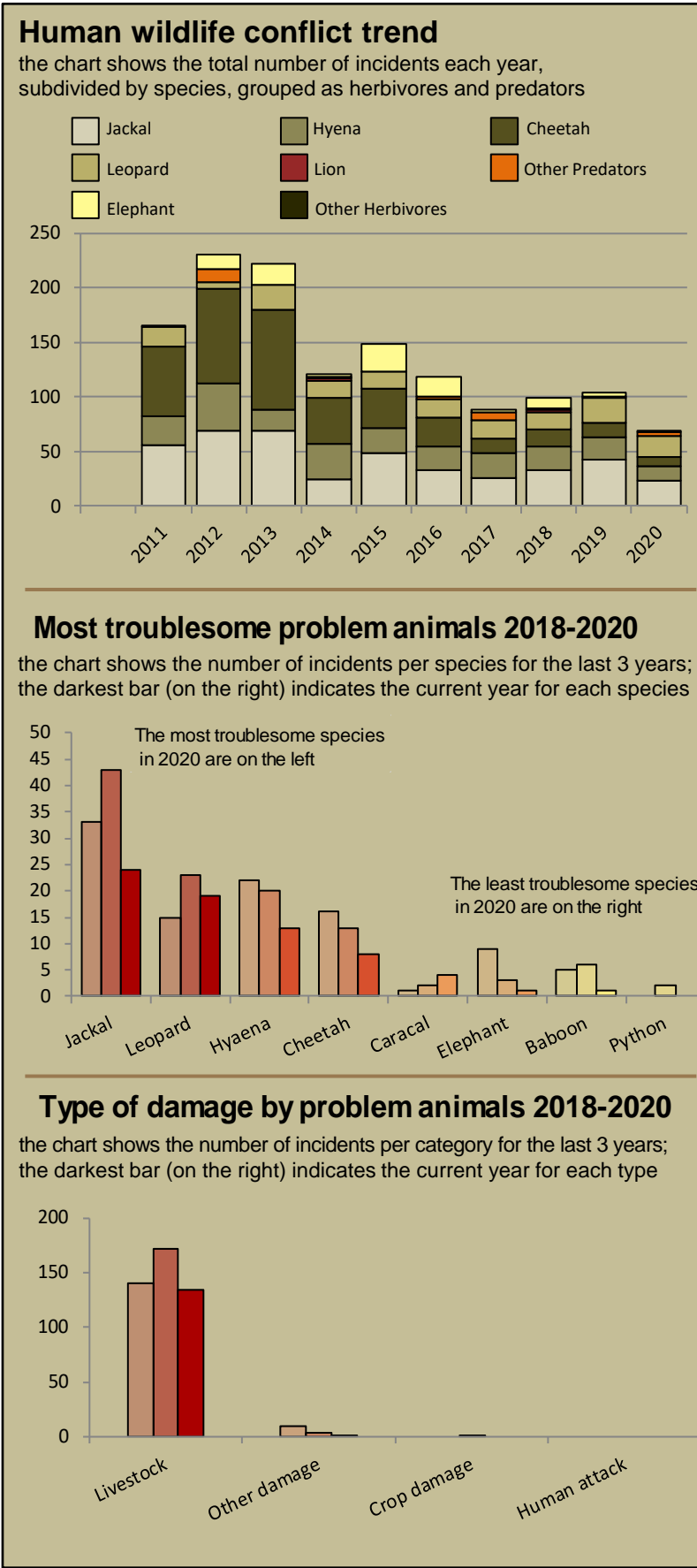
good

Performance is assessed on a scoring system from zero (none) to a maximum of between 3 and 6 (strong/excellent) depending on the indicator.

Indicators 1-17 reflect the performance of the management team in place in the conservancy and an efficient team can achieve a good rating in all 17 indicators.

Indicators 18 & 19 are influenced by external factors and are not considered a reflection of conservancy management. They indicate the current status of wildlife in the conservancy in relation to a theoretical optimal situation.

Human wildlife conflict



Poaching



Wildlife removals – quota use and value

| Potential value estimates (N\$) for a single animal: | Species | Quota 2020 | | | Animals actually used in 2020 | | | | | | Potential | |
|--|-----------|------------|--------|-----------|-------------------------------|-------------------|--------------|----------------|----------------|-----------|------------------|---------------------|
| | | Total | Trophy | Other Use | Trophy | Own Use & Premium | Shoot & Sell | Capture & Sale | Problem Animal | Total Use | Trophy Value N\$ | Other use Value N\$ |
| <div><div>Potential trophy value</div><div>the average trophy value for that species in the conservancy landscape</div><div>trophy values vary depending on trophy quality, international recognition of the hunting operator and the hunting area</div><div>Potential other use value</div><div>the average live sale value of each high value species (indicated with an *). High value species are never used for meat</div><div>Fractions of animals indicate that a quota of 1 animal was awarded with conditions i.e.</div><div>a) over a period of several years and/or</div><div>b) is shared with other conservancies</div></div> | Baboon | 5 | 5 | | | | | | | | 600 | |
| | Gemsbok | 2 | 2 | | | | | | | | 4,300 | |
| | Leopard | 0.33 | 0.33 | | | | | | | | 38,900 | |
| | Springbok | 8 | 4 | 4 | | 4 | | | | 4 | 2,700 | 702 |
| | Mtn Zebra | 3 | 3 | | | | | | | | 6,300 | |
| | | | | | | | | | | | | |
| | | | | | | | | | | | | |
| | | | | | | | | | | | | |
| | | | | | | | | | | | | |
| | | | | | | | | | | | | |
| | | | | | | | | | | | | |
| | | | | | | | | | | | | |

monitoring numbers and trends for a healthy conservancy...

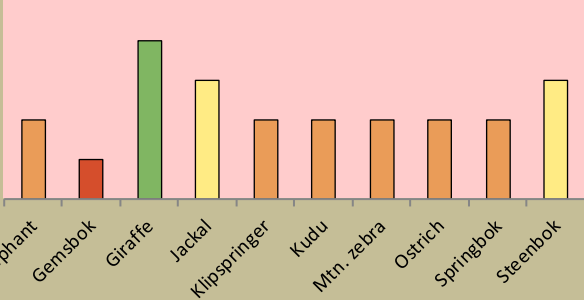
Current wildlife numbers and status

| Species | Animals Seen 2020 | Estimated population range | Wildlife Status | | |
|--------------|-------------------|----------------------------|-----------------|--------------------|----------------|
| | | | Count Trend | National Guideline | Desired Status |
| Elephant | | | | | |
| Gemsbok | 5 | 33 - 50 | | | |
| Giraffe | 10 | 20 - 30 | | | |
| Jackal | 2 | | | | |
| Klipspringer | | | | | |
| Kudu | | | | | |
| Mtn. zebra | 5 | 26 - 30 | | | |
| Ostrich | 2 | 16 - 20 | | | |
| Springbok | 24 | 173 - 510 | | | |
| Steenbok | 1 | 17 - 200 | | | |

Desired Number – gives the species status in the conservancy based on what the conservancy would like to have.

dark green (abundant) – reduce a lot;
light green (common) – reduce a little;
yellow (uncommon) – keep numbers the same;
light orange (rare) – double numbers;
dark orange (very rare) – more than double numbers.

Wildlife status summary in 2020



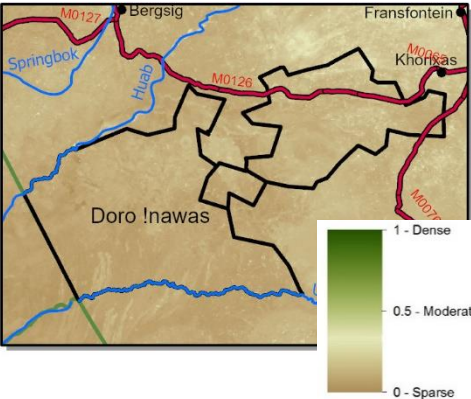
Key to wildlife status



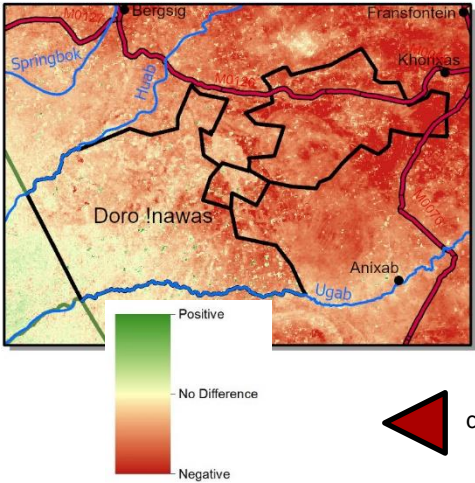
Vegetation monitoring

Green vegetation index (NDVI). Maps show vegetation cover during Feb-Apr of the current year and the difference between the current year and the long-term average (2003-2019)

NDVI 2020



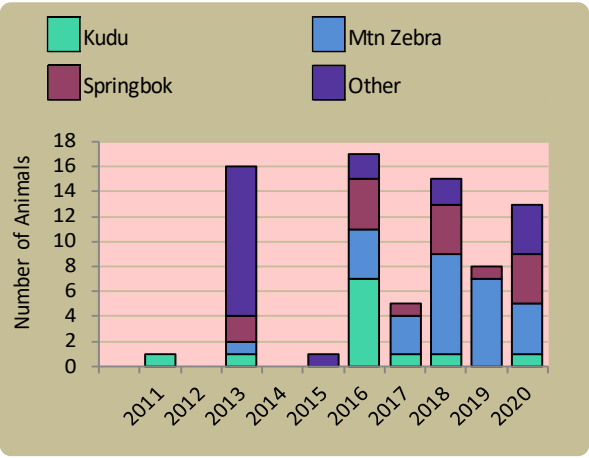
NDVI 2020 – NDVI (2003-2019) Average



Annual game count

Charts show the number of animals seen each year per 100 km driven during the game count. As a point of reference the dashed horizontal line represents the combined 10 year average in Palmwag and Etendeka concessions. Status flags reflect the general count trend over the last 5 years.

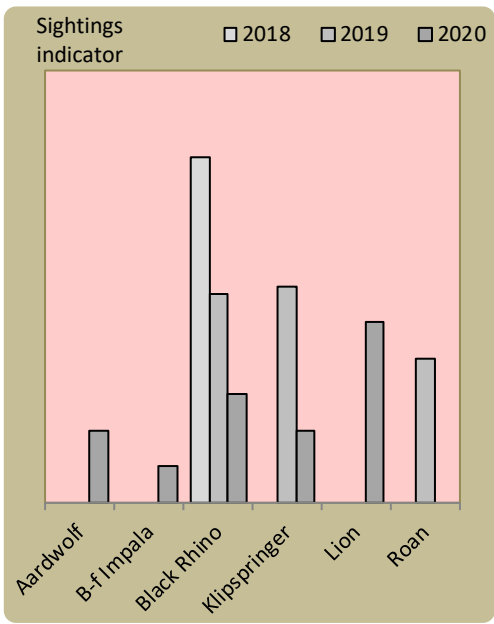
Wildlife mortalities



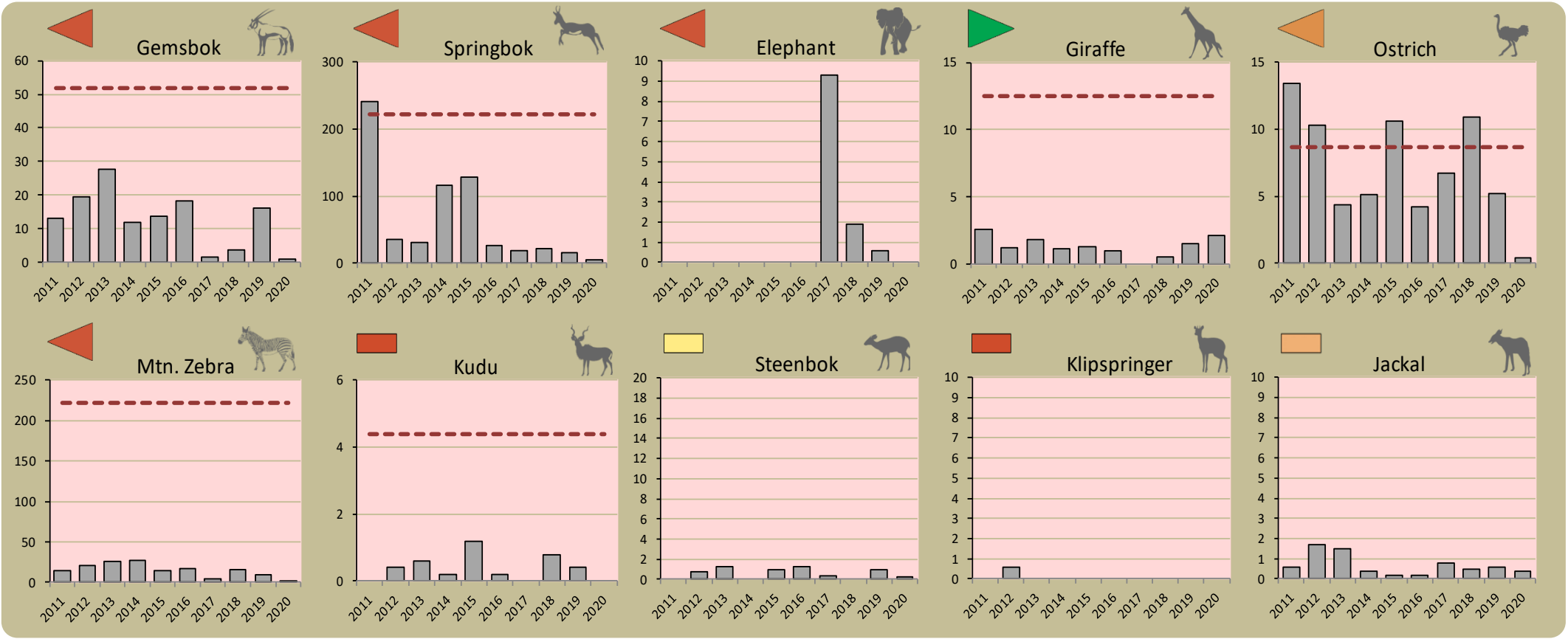
Flags



Locally rare species

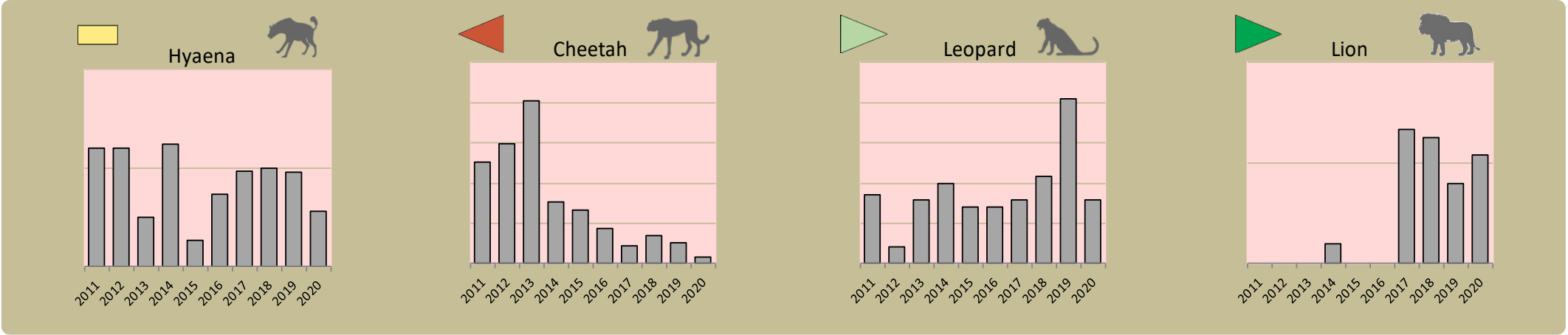


Locally rare species are not found very often in the conservancy and need special conservation attention.



Predator monitoring

charts show the average number of animals seen per Event Book each year status barometers reflect the general sightings trend over the last 5 years



Wildlife provides a wide range of benefits. Some wildlife can cause conflicts, but all wildlife is of value to tourism, trophy hunting and a healthy environment.

By using all the available information and adapting and improving activities, threats such as human wildlife conflict, poaching and other issues can be minimised.

Enabling wise conservancy governance...

| | |
|---------------------------|---------------|
| Conservancy Statistics | |
| Date Registered: | December 1999 |
| Population (2011 census): | 1110 |
| Size (square kilometres): | 4135 |
| Registered members: | 600 |

| | |
|--|-----|
| Key Compliance Requirements | |
| Was an AGM held? | ✗ |
| Were elections held? | N/A |
| Were benefits distributed according to the BDP? | ✓ |
| Is game managed according to the GMUP? | ✓ |
| Was the financial report presented and approved? | ✗ |

| | | | |
|--|------|--------|-------|
| Conservancy Governance | | | |
| | Male | Female | Total |
| Number of management committee members | 11 | 6 | 17 |
| Attendance at AGM | | | |
| Date of the last AGM: | | | |
| Date of the next AGM: | | | |
| Other important issues | | | |
| Budget approved? | | | |
| Work plan approved? | | | |
| Annual conservancy report approved? | | | |

| | | | |
|----------------------|----------------------|-------------|--------|
| Benefit Distribution | | | |
| Type | Description | Beneficiary | Number |
| Community Devp. | Backyard Gardens | Households | 18 |
| | Poultry | Households | 18 |
| | Water Infrastructure | Areas | 4 |
| Social Benefits | Food Parcels | Households | 260 |
| | Funeral Support | Households | 39 |

| | | | |
|---------------------------------------|------|--------|-------|
| Employment | | | |
| | Male | Female | Total |
| Conservancy staff (Incl. CGG & CRM) | 7 | 3 | 10 |
| Number of Community Game Guards | 4 | 1 | 5 |
| Number of Community Resource Monitors | | | |

Governance Performance Rating

How well did the conservancy perform in the past year?

| Performance Category | This Year | Prev. Year | Explanation of performance category |
|---|-----------|------------|---|
| 1 Member engagement | | | The conservancy is adequately engaging its members |
| 2a Benefit planning | | | The conservancy developed its BDP in a transparent and participatory manner |
| 2b Benefit distribution | | | The conservancy distributes benefits to its members in a fair, transparent and equitable manner |
| 3 Accountability | | | Conservancy members are holding the management committee accountable |
| 4 Compliance | | | The conservancy is compliant with the standard operating procedures (SOPs) |
| 5 Stakeholder engagement | | | The conservancy maintains relationships with key external stakeholders |
| 6 Financial management | | | The conservancy is effectively managing its finances |
| Colour codes: <div>none</div> <div>weak</div> <div>moderate</div> <div>strong</div> <div>exceptional</div> <div>N/A</div> | | | |