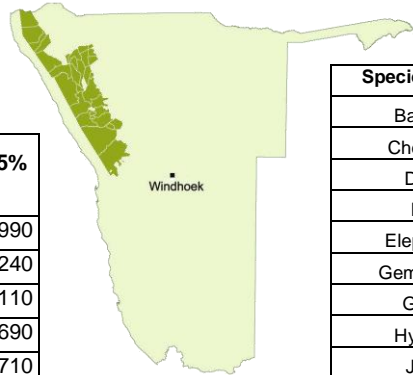


GAME COUNTS IN NORTH-WEST NAMIBIA

June 2015

Regional summary



Count area: 6.9 million ha

Total Population Estimates

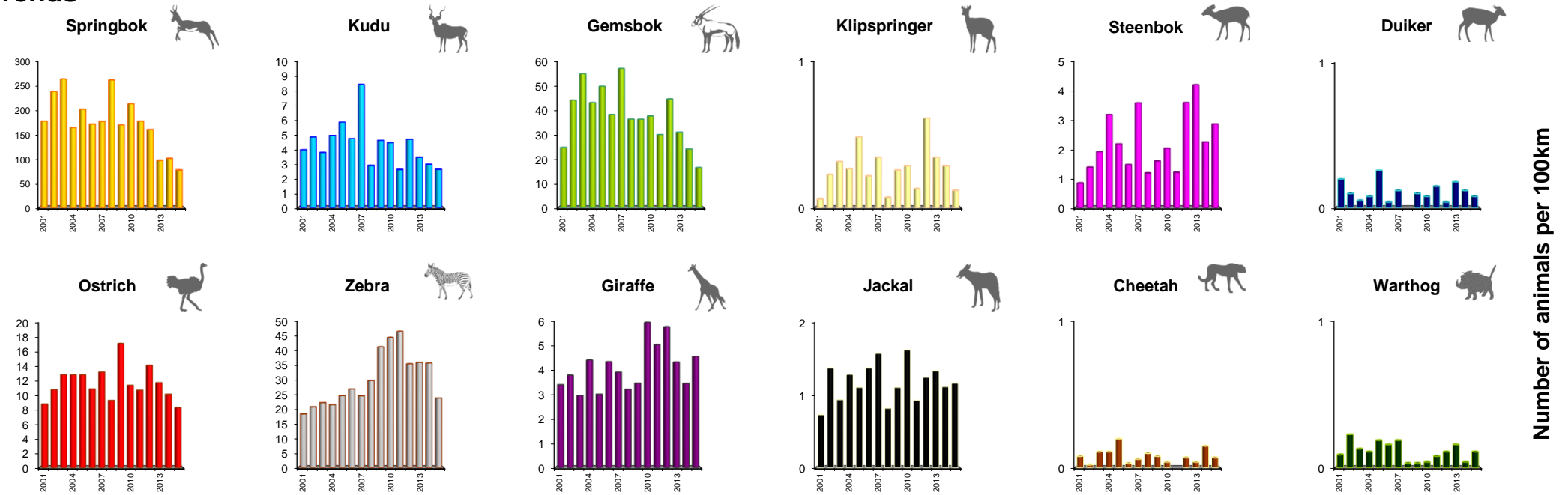
Species	Population estimate	Lower 95% CL	Upper 95% CL
Gemsbok (U)	12,970	9,360	17,990
Giraffe (U)	2,940	2,040	4,240
Kudu (U)	3,780	2,340	6,110
Ostrich (U)	7,290	5,480	9,690
Springbok (H)	59,940	46,840	76,710
Steenbok (H)	13,610	10,270	18,030
Zebra (U)	17,910	11,840	27,100

Estimates are derived using DISTANCE analysis which takes account of drop-off in detectability with distance from the transect line. Estimates are conservative estimates as, on average, 28% of the count area is not sampled (due to inaccessibility) and is consequently assumed to hold no animals. Model selection: U = uniform key; H = half normal.

Total number of animals seen each year

Species	2001	2002	2003	2004	2005	2006	2007	2008	2009	2010	2011	2012	2013	2014	2015
Baboon	108	116	203	135	555	165	567	239	310	390	172	510	548	192	334
Cheetah	5	1	7	7	14	2	4	7	6	3		5	3	11	5
Duiker	12	6	3	5	18	3	8		7	6	11	3	14	9	6
Eland	63	19		12	10	12	45	5	30		13	2		5	45
Elephant	40	24	45	17	107	5	36	44	72	31	73	39	34	74	64
Gemsbok	1,616	2,698	3,483	2,749	3,506	2,612	3,898	2,609	2,652	2,755	2,238	3,244	2,413	1,791	1,247
Giraffe	215	232	189	281	213	296	268	231	253	441	362	420	336	256	346
Hyaena	2			1	7		4	3	1	10	2	1	9	1	5
Jackal	45	84	60	82	78	94	108	59	81	119	68	91	104	83	89
Klipspringer	3	14	20	17	34	15	24	5	19	21	10	45	27	21	9
Kudu	189	297	241	316	413	324	576	207	337	327	190	329	269	221	200
Ostrich	577	659	815	817	903	741	902	666	1,247	832	772	1,027	911	752	630
Rhino	1	1	7	2	9	2	9	6	3	4	3	10	8	9	5
Springbok	11,606	14,560	16,734	10,509	14,227	11,746	12,135	18,729	12,411	15,601	12,818	11,711	7,586	7,531	5,876
Steenbok	49	85	122	203	154	101	245	85	117	149	88	261	325	167	218
Warthog	6	14	8	7	13	11	13	2	2	3	6	8	12	3	8
Zebra	1,210	1,274	1,414	1,376	1,738	1,838	1,684	2,136	3,004	3,248	3,361	2,583	2,790	2,648	1,812

Trends

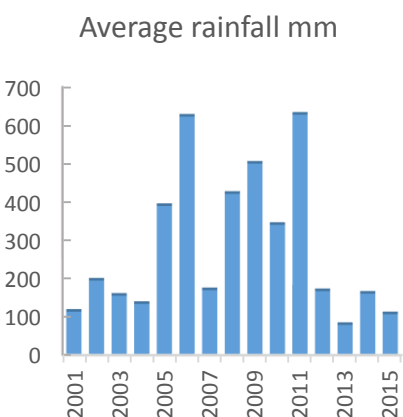


Route statistics and animals seen by conservancy

	Total	!Khoru !Goreb	#Kheadi //Hoas	Anabeb	Doro !Nawas & Uibasen Twyfelfontein	Ehi-Rovipuka	Etendeka	#Gaingu	//Huab	Marienfuss	Ohungu	Okangundumba	Okondjombo	Omatendeka	Ombujokanguindi	Ongongo	Orupembe	Orupupa	Otjambangu	Otjikondavirongo	Otjimboyo	Otju_west	Otuzemba	Ozondundu	Palmwag	Puros	Sanitatas	Sesfontein	Sorris sorris	Torra	Tsiseb
Total Route km	7,518	115	301	215	475	270	60	709	413	312	186	148	189	214	164	87	319	189	46	117	102	87	101	90	548	324	135	309	204	523	567
Total area (km2)	68,901	1,337	3,358	1,636	4,137	1,979	507	7,756	2,129	3,034	1,245	1,130	1,643	1,613	747	660	2,616	1,775	348	1,067	432	1,208	741	743	5,891	3,564	1,446	2,469	2,290	3,492	7,908
Number of routes	152	3	9	5	9	5	3	10	8	6	3	3	4	4	3	5	6	3	1	4	2	2	3	2	11	6	4	8	4	8	8
% area excluded	28	45	45	51	6	28	55	17	4	28	14	29	16	48	23	50	10	44	74	58	30	71	26	55	43	31	28	42	18	25	16

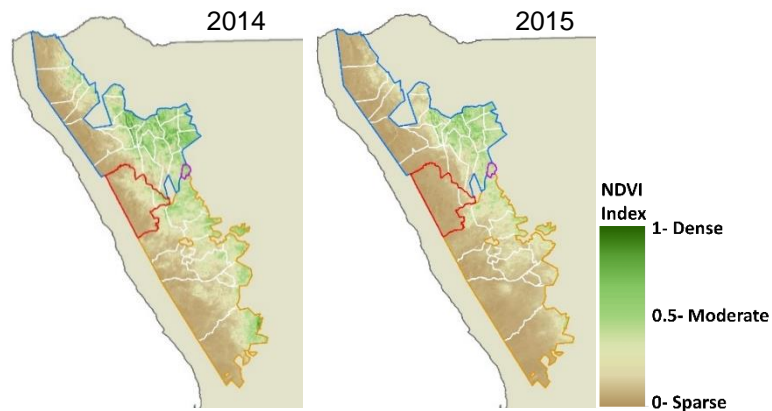
Species	Total	!Khoru !Goreb	#Kheadi //Hoas	Anabeb	Doro !Nawas & Uibasen Twyfelfontein	Ehi-Rovipuka	Etendeka	#Gaingu	//Huab	Marienfuss	Ohungu	Okangundumba	Okondjombo	Omatendeka	Ombujokanguindi	Ongongo	Orupembe	Orupupa	Otjambangu	Otjikondavirongo	Otjimboyo	Otju_west	Otuzemba	Ozondundu	Palmwag	Puros	Sanitatas	Sesfontein	Sorris sorris	Torra	Tsiseb			
Baboon	334		19	7	1	30						5	21	5	10	25								81	24	30				26		50		
Cheetah	5																																	5
Duiker	6					1		1	1									2			1													
Eland	0																																	
Elephant	63			4			14					7													14	1							23	
Gemsbok	1223		49	1	71	2	66		5	256			15	24			182							1	224	28	27	39	24	194	15			
Giraffe	317		43		7	35	27			1				59			4	3						23	55	6	15	4	35					
Hyaena	5																								5									
Jackal	81		4	4	1	3	5	2	6	4	4	1	1	5	1		2				4	1			20	1			1		7	4		
Klipspringer	9		2						7																									
Kudu	199		22	7	6		6	1	51				3						12	7				8	26	32						18		
Ostrich	630		5	6	55	30	2	14		64	5	14	9	12	29	31	81	12	16	2	3	2	1	6	65	56	22	29	12	19	28			
Rhino	5						1																		3								1	
Springbok	5842		17	231	667	178	123	634	4	186	25	261	80	643	153	20	526	81	156	47	3	29		14	325	83	271	251	7	630	197			
Steenbok	216	3	18	4	5	16	3	16	34			6	11	2	6	6		2	11	3		7	1	13	11	12	2	1	8	4	3	8		
Warthog	4								4																									
Zebra	1683		97	5	75	79	320	1	7	6			71	25	1		21							6	450	4	25	13		469	8			

Rainfall



The rainfall season is from July to June and values are an average for the whole area. The year represents the season immediately prior to the count.

Vegetation (NDVI)

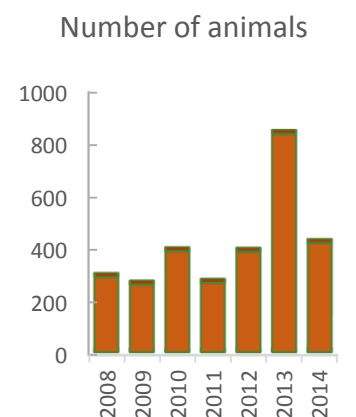


NDVI is a measure of the density of chlorophyll in vegetation cover. It can be used as an indicator of the amount of biomass available to wildlife. The maps here show the values for April in the current and previous game count year.

Harvesting offtake

Species	Animals
Gemsbok	572
Giraffe	16
Jackal	14
Klipspringer	5
Kudu	120
Ostrich	95
Springbok	1727
Steenbok	8
Mtn. Zebra	350

Mortalities



Total number of carcasses from all species.