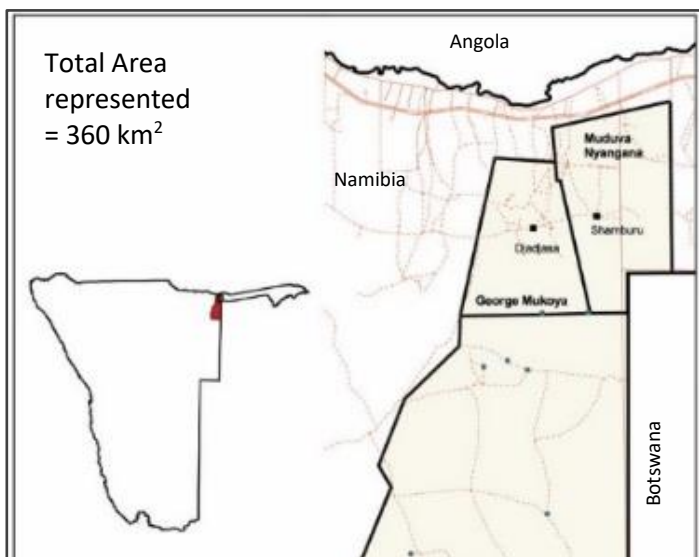


Estimates

Animals seen



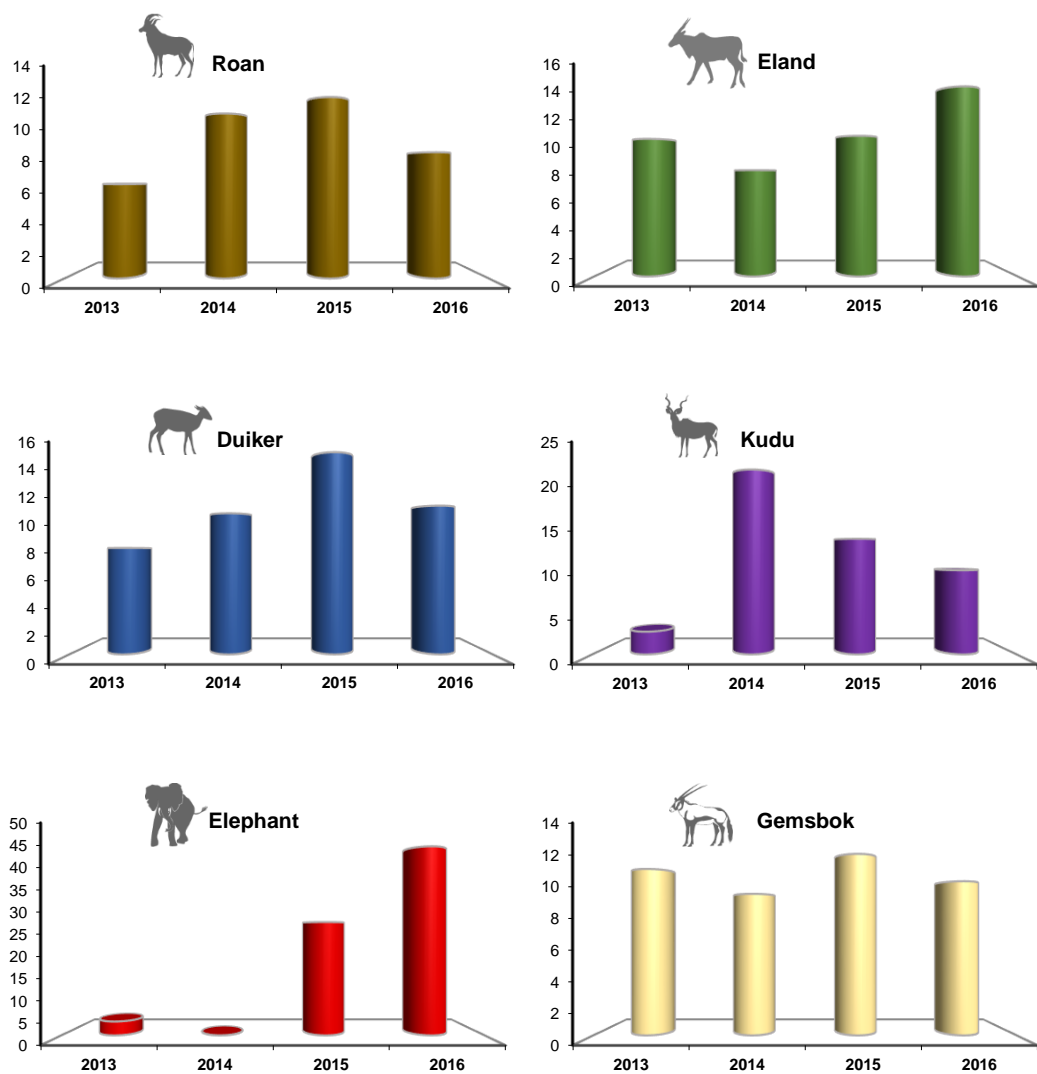
Species	George Mukoya		Muduva Nyangana	
	Estimate	95% CI Range	Estimate	95% CI Range
Duiker	319	203 - 351	192	109 - 340
Eland	153	66 - 353	114	19 - 691
Gemsbok	265	118 - 596	64	15 - 268
Kudu	103	44 - 241	199	54 - 730
Roan	16	5 - 50	190	48 - 745

Estimates are derived using DISTANCE analysis which takes account of drop-off in detectability with distance from the transect line. Sightings over the last 4 years were used to determine species detection profiles. Care should be taken when considering these estimates for quota setting purposes.

Species	Transects				Total Seen
	George Mukoya		Muduva Nyangana		
	Seen	Groups	Seen	Groups	
Duiker	28	26	15	14	43
Eland	33	11	22	4	55
Elephant	133	11	38	4	171
Gemsbok	34	14	5	3	39
Giraffe	19	5	70	10	89
Hyaena	1	1			1
Jackal					0
Kudu	14	6	24	8	38
Leopard					0
Lion					0
Ostrich	3	2	2	2	5
Porcupine					0
Roan	4	3	28	7	32
Steenbok	6	6	1	1	7
Vervet Monkey	1	1	7	1	8
Warthog			4	2	4
Wild dog					0
Wildebeest					0

	George Mukoya	Muduva Nyangana
Transects	24	11
Transect Length (km)	238	94
Area Represented (km ²)	238	122

Trends overall: Animals per 100km



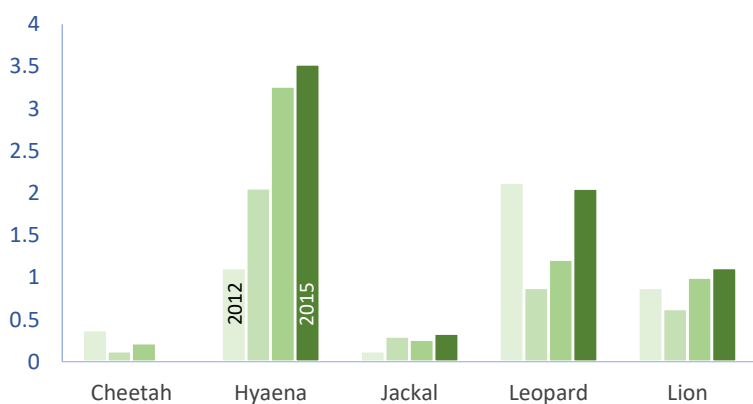
2015 versus 2016



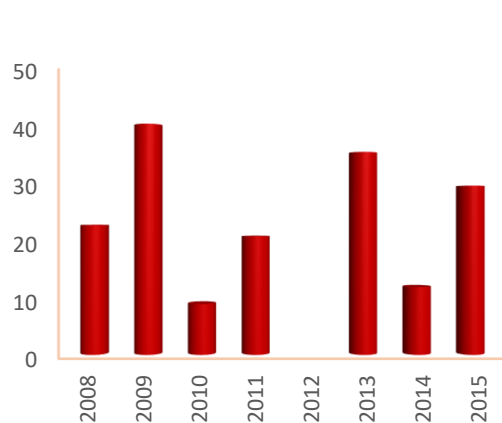
Species	Animals		Groups	
	2015	2016	2015	2016
Bushpig	2	0	1	0
Duiker	56	43	53	40
Eland	39	55	11	15
Elephant	98	171	9	15
Gemsbok	44	39	13	17
Giraffe	105	89	26	15
Hyaena	2	1	2	1
Impala	1	34	1	2
Kudu	50	38	13	14
Ostrich	8	5	3	4
Roan	44	32	9	10
Steenbok	20	7	16	7
V. Monkey	69	8	4	2
Warthog	32	4	8	2
Wild dog	3	0	1	0

Supplementary Data (Event Book & FEWS)

Predator Sighting Index



Mortalities (animals)



Rainfall (mm)

