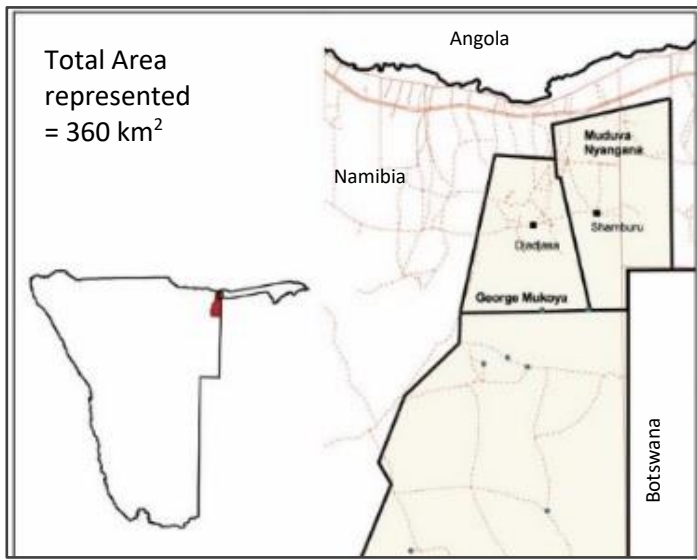


2017 GAME COUNTS: KAVANGO EAST

Estimates



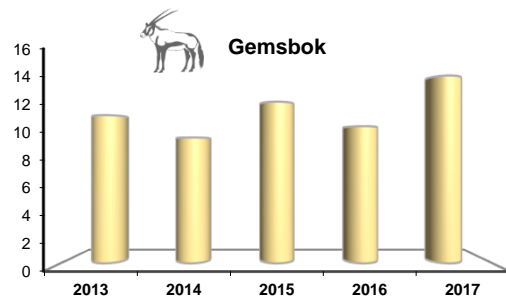
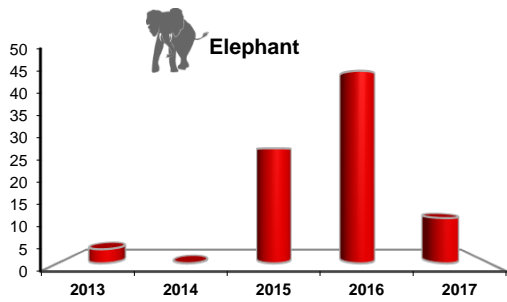
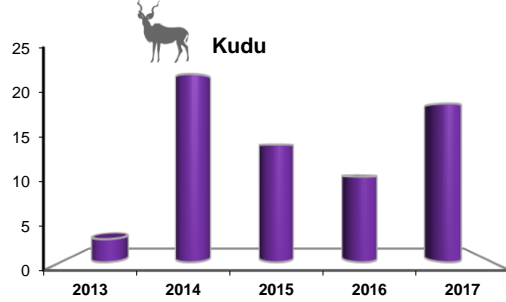
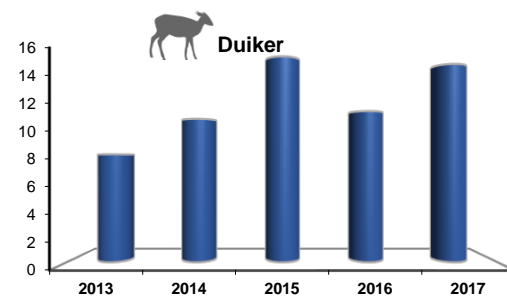
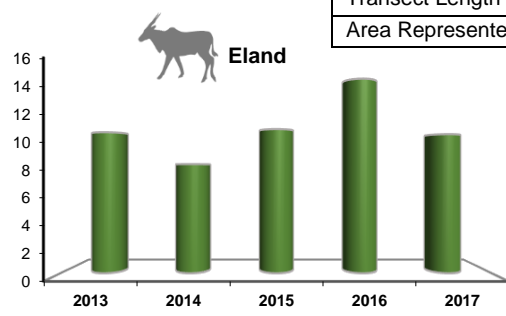
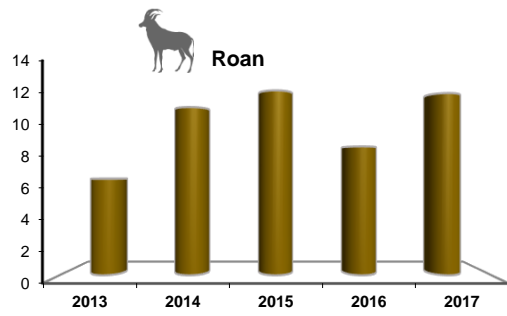
Species	George Mukoya		Muduva Nyangana	
	Estimate	95% CI Range	Estimate	95% CI Range
Duiker (HN)	417	270 - 643	225	90 - 564
Eland (U)	143	50-410	70	23-214
Gemsbok (U)	304	140-659	99	30-329
Kudu (U)	272	114-647	152	48-477
Roan (HN)	247	96-636	114	41-321
Steenbok (HN)	74	30-181	41	14-120

Estimates are derived using DISTANCE analysis which takes account of drop-off in detectability with distance from the transect line. Sightings over the last 5 years were used to determine species detection profiles. Model: U=uniform; HN=half normal. *Care should be taken when considering these estimates for quota setting purposes.*

Animals seen

Species	Transects				Total Seen
	George Mukoya		Muduva Nyangana		
	Seen	Groups	Seen	Groups	
Duiker	38	32	18	15	56
Eland	29	7	10	3	39
Elephant	4	1	36	7	40
Gemsbok	43	14	10	4	53
Giraffe	94	28	12	3	106
Hyaena					0
Jackal					0
Kudu	47	10	23	4	70
Leopard	2	1			2
Lion					0
Ostrich			1	1	1
Porcupine			2	1	2
Roan	32	9	13	8	45
Steenbok	7	6	3	3	10
Vervet Monkey	35	2	10	1	45
Warthog	8	3	1	1	9
Wild dog					0
Wildebeest	4	1			4

Trends overall: Animals per 100km

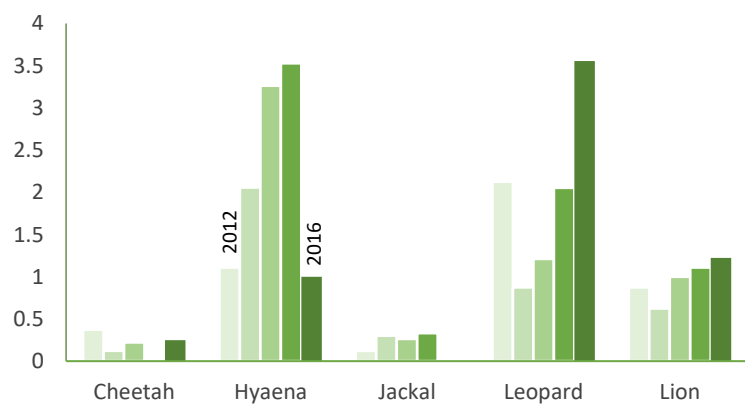


Sightings: last 3 years

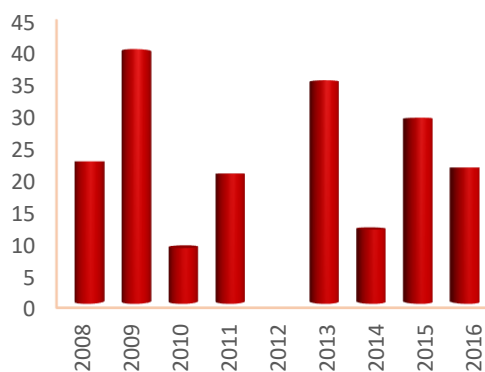
Species	Animals			Groups		
	2015	2016	2017	2015	2016	2017
Bushpig	2	0	0	1	0	0
Duiker	56	43	56	53	40	47
Eland	39	55	39	11	15	10
Elephant	98	171	40	9	15	8
Gemsbok	44	39	53	13	17	18
Giraffe	105	89	106	26	15	31
Hyaena	2	1	0	2	1	0
Impala	1	34	0	1	2	0
Kudu	50	38	70	13	14	14
Leopard	0	0	2	0	0	1
Ostrich	8	5	1	3	4	1
Roan	44	32	45	9	10	17
Steenbok	20	7	10	16	7	9
V. Monkey	69	8	45	4	2	3
Warthog	32	4	9	8	2	4
Wild dog	3	0	0	1	0	0

Supplementary Data (Event Book & FEWS (<http://www.fews.net/>))

Predator Sighting Index



Mortalities (animals)



Rainfall (mm)

