

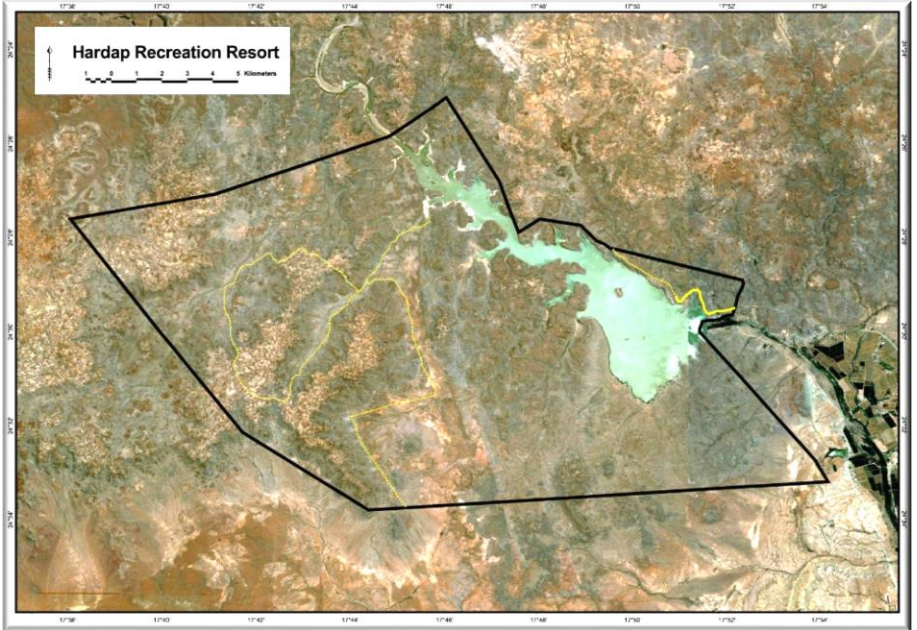
# GAME COUNTS IN HARDAP GAME PARK

May 2014

## Total Population Estimates

Species	Estimate	Lower 95 % CL	Upper 95% CL
Gemsbok	943	653	1362
Kudu	218	106	449
Mountain Zebra	75	25	223
Ostrich	202	116	351
Springbok	1352	683	2676
Warthog	63	17	235

Estimates were calculated using DISTANCE analysis.



## Total numbers seen per year

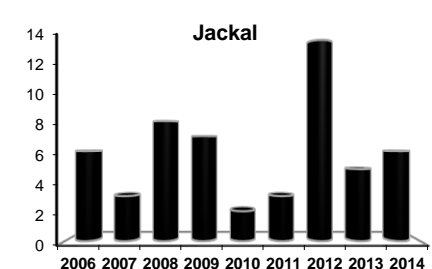
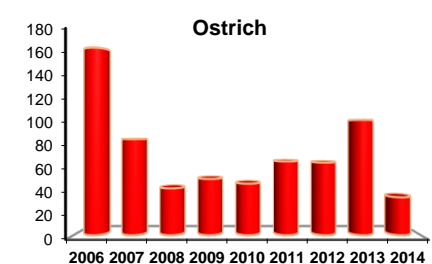
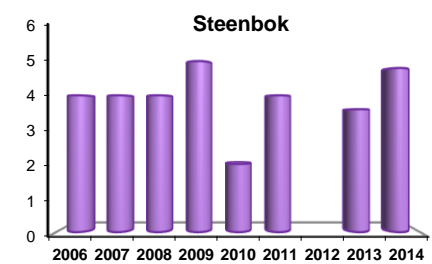
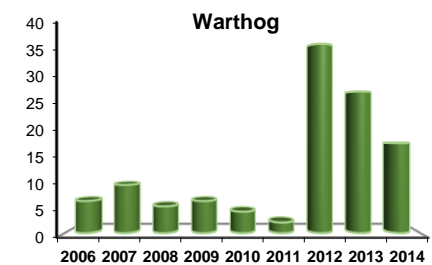
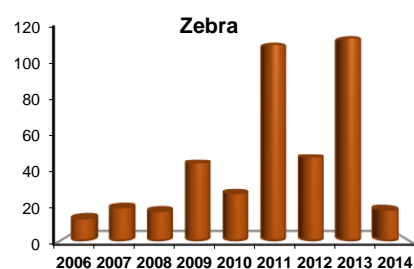
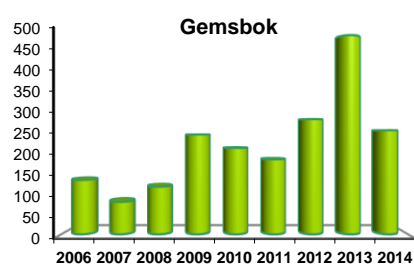
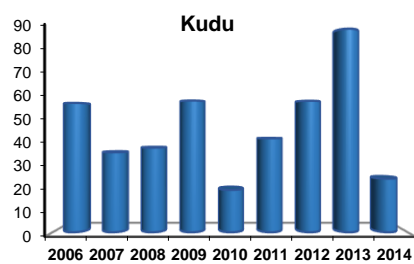
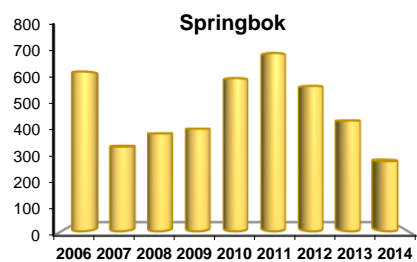
Species	2005	2006	2007	2008	2009	2010	2011	2012	2013	2014
Baboon					16	17		7	17	62
Gemsbok	47	129	77	113	237	205	178	225	393	206
Jackal	3	6	3	8	7	2	3	11	4	5
Klipspringer		2								
Kudu	66	55	34	36	56	18	40	46	72	19
Mountain Zebra	6	12	18	16	43	26	108	38	93	14
Ostrich	78	160	82	40	48	44	63	51	82	27
Rhino	2	3			5	2	1		4	
Springbok	379	606	322	372	390	581	676	454	351	222
Steenbok	16	4	4	4	5	2	4		3	4
Warthog	3	6	9	5	6	4	2	29	22	14

## Animals seen during this count:

Total Route km	80
Total area (km <sup>2</sup> )	238
Number of routes	2
% area excluded	8

Species	Total	Route 1	Route 2
Baboon	62	62	
Gemsbok	206	181	25
Jackal	5	2	3
Klipspringer	0		
Kudu	19	13	6
Mountain Zebra	14	6	8
Ostrich	27	19	8
Rhino	0		
Springbok	222	125	97
Steenbok	4	3	1
Warthog	14	12	2

## Trends:



Y-axis = Number of animals per 100km