

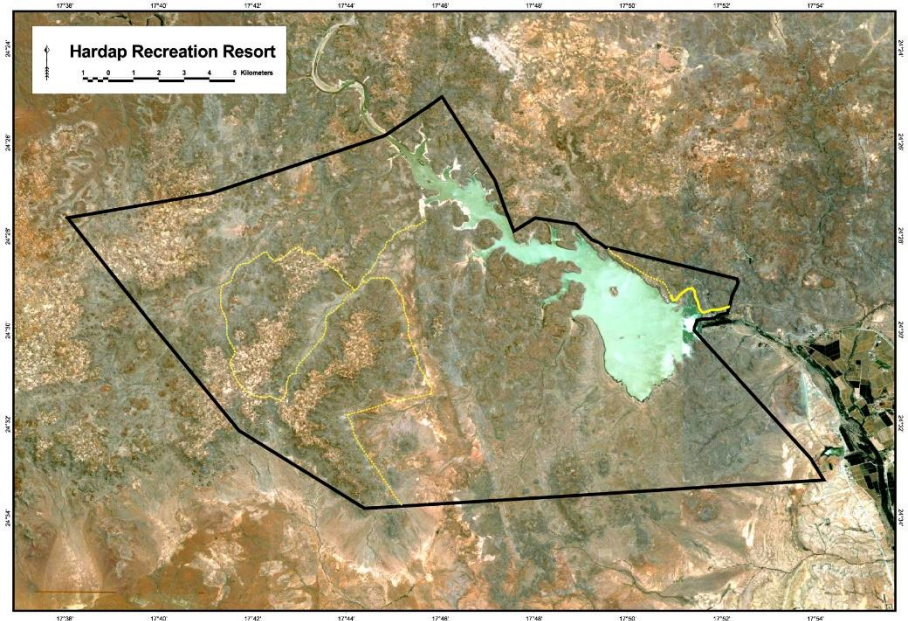
GAME COUNTS IN HARDAP GAME PARK

May 2016

Total Population Estimates

Species	Estimate	Lower 95 % CL	Upper 95% CL	Model
Gemsbok	1,480	990	2,220	HN
Kudu	160	80	310	HN
Ostrich	180	110	310	HN
Springbok	2,170	1,350	3,480	HN
Hartmann's Zebra	540	340	850	U

Estimates were calculated using DISTANCE. Numbers are rounded to the nearest 10.
Model selection: U = uniform key; HN = half normal



Total numbers seen per year

Species	2005	2006	2007	2008	2009	2010	2011	2012	2013	2014	2015	2016
Baboon					16	17		7	17	62		84
Gemsbok	47	129	77	113	237	205	178	225	393	206	603	480
Jackal	3	6	3	8	7	2	3	11	4	5	4	10
Klipspringer		2										
Kudu	66	55	34	36	56	18	40	46	72	19	5	22
Ostrich	78	160	82	40	48	44	63	51	82	27	93	49
Springbok	379	606	322	372	390	581	676	454	351	222	234	402
Steenbok	16	4	4	4	5	2	4		3	4	5	6
Warthog	3	6	9	5	6	4	2	29	22	14	18	11
Hartmann's Zebra	6	12	18	16	43	26	108	38	93	14	50	156

Animals seen during this count:

Total Route km	80
Total area (km2)	238
Number of routes	2
% area excluded	8

Species	Total	Route 1	Route 2
Baboon	84	78	6
Gemsbok	480	222	258
Jackal	10	4	6
Klipspringer	0		
Kudu	22	17	5
Ostrich	49	25	24
Springbok	402	242	160
Steenbok	6		6
Warthog	11	8	3
Hartmann's Zebra	156	60	96

Trends: Number of animals per 100km

