

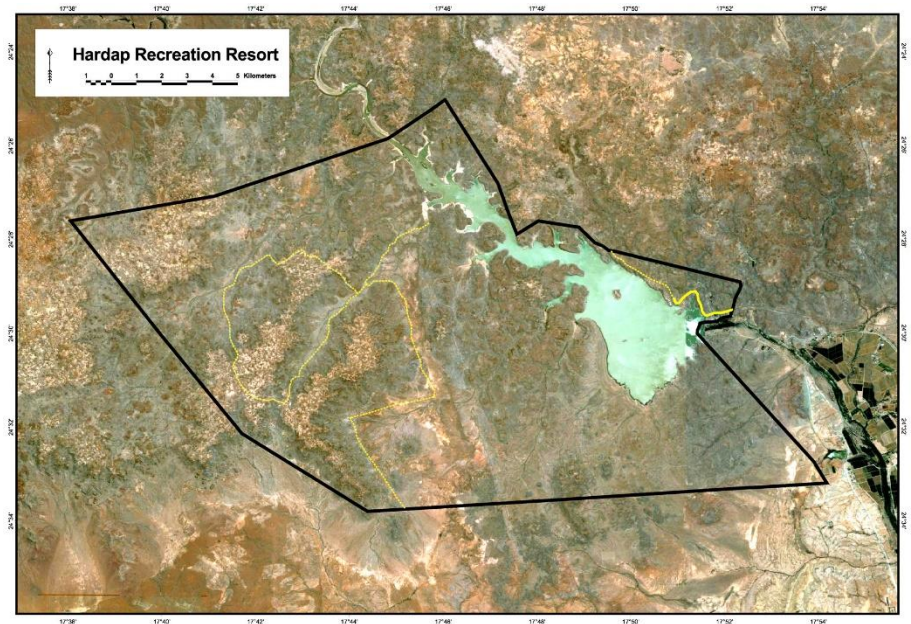
GAME COUNTS IN HARDAP GAME PARK

May 2015

Total Population Estimates

Species	Estimate	Lower 95 % CL	Upper 95% CL	Model
Gemsbok	2,607	1720	3950	Uniform
Kudu	42	12	153	Uniform
Mountain Zebra	179	79	408	Half normal
Ostrich	355	196	644	Half normal
Springbok	1,379	731	2,601	Uniform
Warthog	103	40	266	Uniform

Estimates were calculated using DISTANCE analysis.



Total numbers seen per year

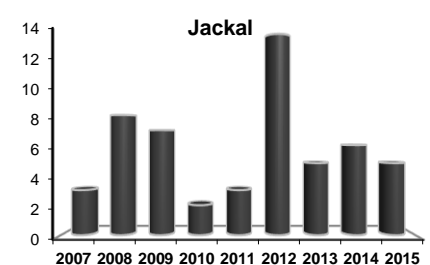
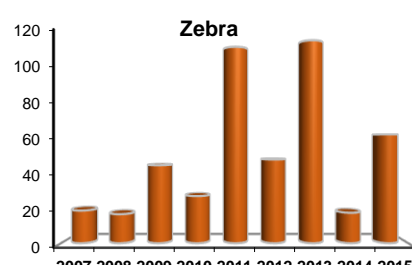
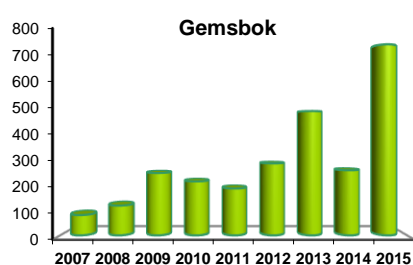
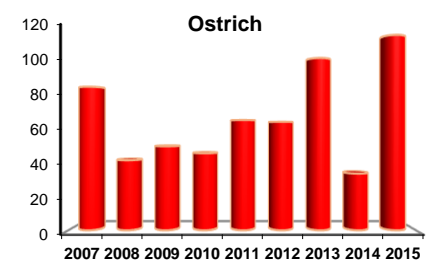
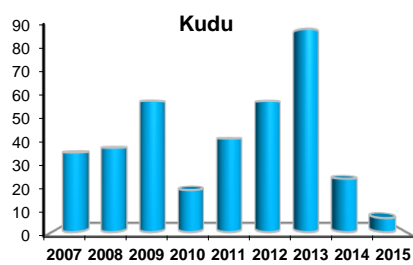
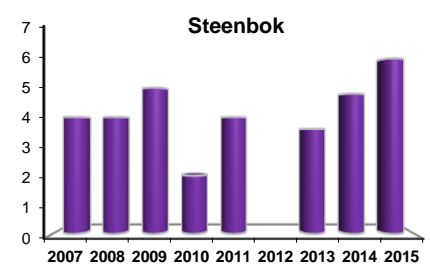
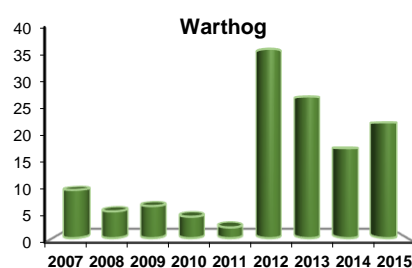
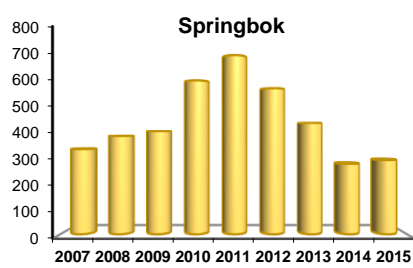
Species	2005	2006	2007	2008	2009	2010	2011	2012	2013	2014	2015
Baboon					16	17		7	17	62	
Gemsbok	47	129	77	113	237	205	178	225	393	206	603
Jackal	3	6	3	8	7	2	3	11	4	5	4
Klipspringer		2									
Kudu	66	55	34	36	56	18	40	46	72	19	5
Mountain Zebra	6	12	18	16	43	26	108	38	93	14	50
Ostrich	78	160	82	40	48	44	63	51	82	27	93
Rhino	2	3			5	2	1		4		
Springbok	379	606	322	372	390	581	676	454	351	222	234
Steenbok	16	4	4	4	5	2	4		3	4	5
Warthog	3	6	9	5	6	4	2	29	22	14	18

Animals seen during this count:

Total Route km	80
Total area (km ²)	238
Number of routes	2
% area excluded	8

Species	Total	Route 1	Route 2
Baboon	0		
Gemsbok	603	232	371
Jackal	4	1	3
Klipspringer	0		
Kudu	5	2	3
Mountain Zebra	50	12	38
Ostrich	93	68	25
Rhino	0		
Springbok	234	115	119
Steenbok	5		5
Warthog	18	11	7

Trends:



Y-axis = Number of animals per 100km