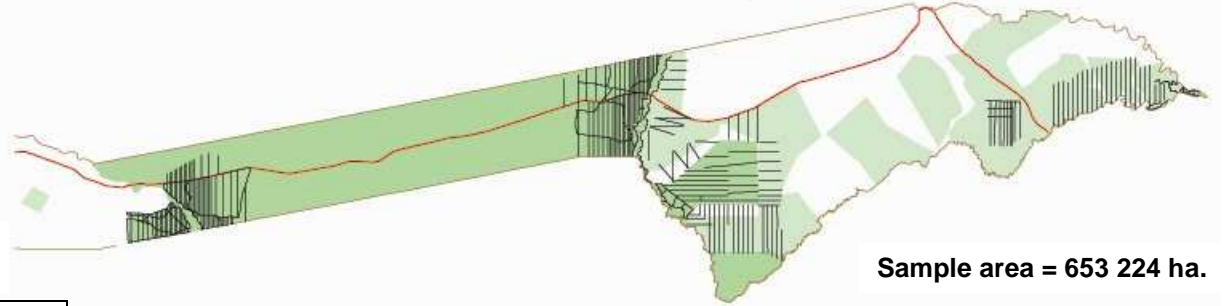


GAME COUNTS IN BWABWATA & CAPRIVI

Dry Season 2011 Live sightings



Numbers seen by conservation area

	Parks				Conservancies												
	Bwabwata West - Mahango	Bwabwata West - Buffalo	Bwabwata East	Mudumu	Bayerwa	Dzoti	Impallia	Kabulabula	Kasika	Kwandu	Mashi	Mayuni	Nakobolelwa	Salambala	Sikunga	Sobbe	Wuparo
Total km	294	517	868	181	76	90				44	96	69		214	41	90	60
No. of routes	22	35	58	12	12	12				6	9	6		16	4	10	5

Species	Bwabwata West - Mahango	Bwabwata West - Buffalo	Bwabwata East	Mudumu	Bayerwa	Dzoti	Impallia	Kabulabula	Kasika	Kwandu	Mashi	Mayuni	Nakobolelwa	Salambala	Sikunga	Sobbe	Wuparo
Baboon	52		20	90													
Buffalo	13	1424	360	31													
Bushbuck		8	1	3							1						
Bushpig																	
Crocodile		2															
Duiker	36	62	120	14	3	2				6	10	4		7	1	11	1
Eland		5	26	11								2					
Elephant	197	856	1051	447	32	1					8			5	50		2
Giraffe	33		79	11											1		
Hippo	11	8	3	3						1							
Hyaena			3											1			
Impala	382	91	519	293							5	10		99			2
Jackal BB				2													
Kudu	194	226	268	42	10	14				10	6			19		3	3
Lechwe	72		165	3													
Leopard		1	3														
Lion		2	11	1													
Ostrich	26		2														
Reedbuck	11	1	28	1							2			3			
Roan	22	14	18	57		2					35	30					1
Sable	57	238	222	1													
Steenbok	1	12	30	3													
Tsessebe	3		47	1													
V. Monkey		30	29	2													
Warthog	33	69	58	32	5	4					10			35		5	
Wild dog				20													
Wilbeest	12		35	224										115			
Zebra	128	8	264	145		7					20			1209			

□ = no counts were undertaken this year in these conservancies

Estimates

Estimates were calculated using DISTANCE, for all species with sufficient sightings. These are **average** estimates as they are calculated using sightings from the 3 most recent count years. Conservancies have been grouped due to the low numbers of animals recorded. The bottom row of the table (hyphenated) numbers = 95% Confidence Intervals.

Species	Bwabwata West - Mahango	Bwabwata West - Buffalo	Bwabwata East	Kwandu Mayuni Mashi Sobbe	Mudumu	Bayerwa Dzoti Wuparo	Salambala	Nakobolelwa Kabulabula Kasika Impallia	Sikunga
Buffalo	19	2358	** 1214	0	*	0	0		0
	7-53	1095-5077	329-4476	0	*	0	0		0
Duiker	166	659	1429	1583	462	172	165		*
	114-240	534-814	1172-1741	1129-2220	276-774	100-297	83-329		*
Elephant	238	2912	5289	*	4387	167	*		*
	93-609	2251-3768	3987-7015	*	2817-6832	49-564	*		*
Giraffe	66	0	205	0	*	0	0		*
	40-109	0	114-369	0	*	0	0		*
Impala	1159	781	4254	119	2422	*	639		0
	594-2260	321-1899	2656-6813	44-325	1216-4824	*	305-1339		0
Kudu	637	2088	1607	605	490	85	235		0
	470-862	1343-3249	1218-2120	242-1515	262-914	36-201	101-546		0
Lechwe	*	0	325	0	*	0	0		0
	*	0	155-683	0	*	0	0		0
Reedbuck	16	25	97	*	*	0	0		0
	5-50	7-96	40-239	*	*	0	0		0
Roan	147	212	62	464	527	*	0		0
	86-252	118-379	30-128	170-1268	258-1077	*	0		0
Sable	199	700	575	0	*	0	0		0
	97-409	447-1096	269-1230	0	*	0	0		0
Steenbok	56	150	313	0	174	0	0		0
	30-102	99-226	221-443	0	81-376	0	0		0
Tsessebe	*	0	133	0	*	0	0		0
	*	0	66-268	0	*	0	0		0
Warthog	181	396	539	943	1661	61	525		0
	107-304	229-687	380-764	408-2179	1046-2638	26-143	281-980		0
Wilbeest	29	0	161	0	2144	0	#		0
	11-77	0	62-419	0	623-7381	0	#		0
Zebra	384	*	1390	*	1706	*	#		0
	216-683	*	949-2037	*	1064-2736	*	#		0

* = too few observations to provide useful local estimates of numbers

** = estimate is an average of the last 2 count years

0 = no animals seen in counts

= Many animals were seen however they were only in one or two groups and estimating population size was not possible using DISTANCE

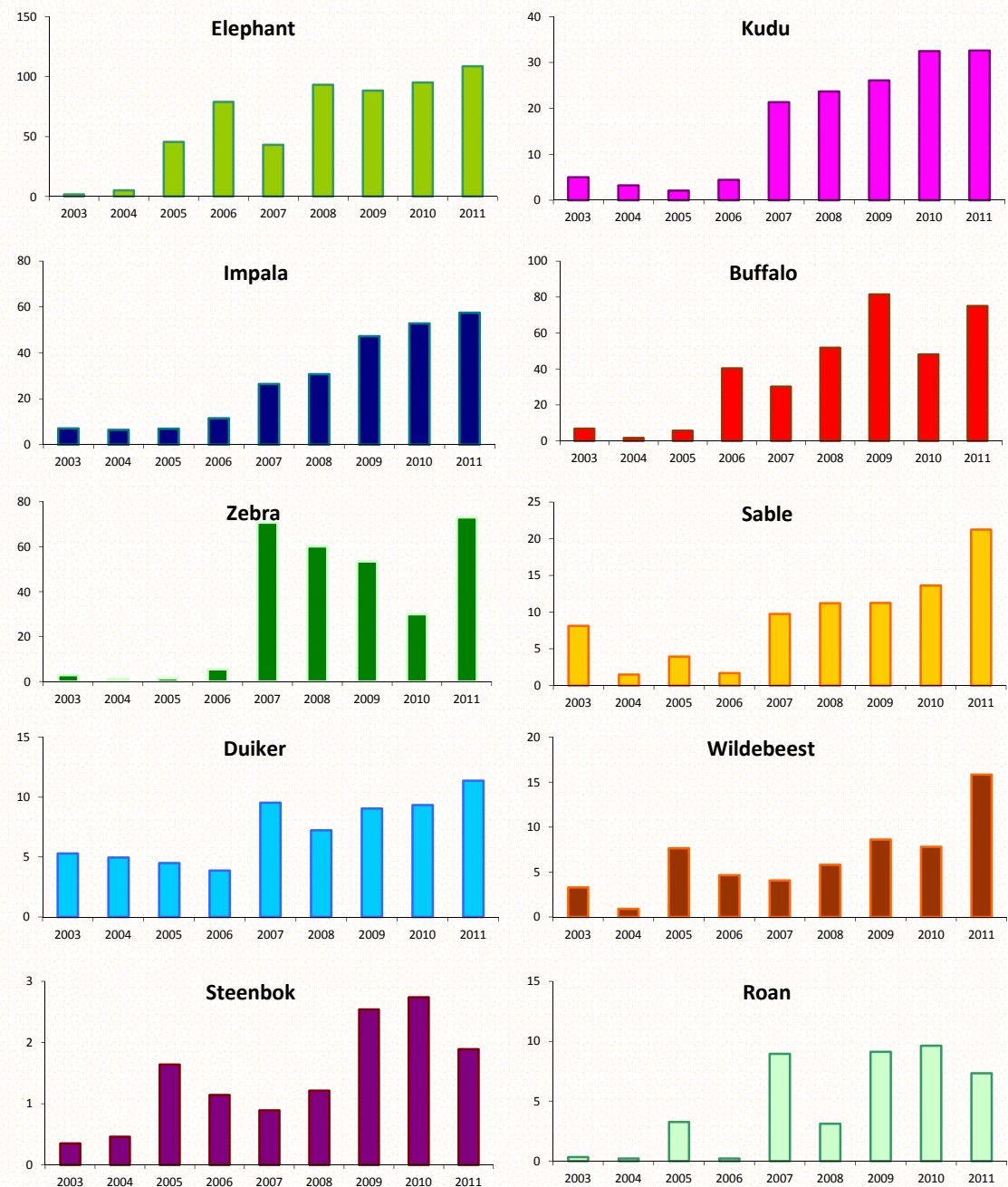
Numbers seen by habitat

Species	Riverine zone with floodplain grassland	Woodland < 8km from the river	Woodland > 8km from the river	Eastern floodplain and grassland	Riverine forest (Impallia)
Baboon	116	31	15	0	
Buffalo	1691	110	27	0	
Bushbuck	10	1	2	0	
Bushpig	0	0	0	0	
Crocodile	2	0	0	0	
Duiker	9	91	176	1	
Eland	0	8	36	0	
Elephant	253	867	1503	4	
Giraffe	57	22	44	1	
Hippo	23	3	0	0	
Hyaena	0	1	2	1	
Impala	1043	354	158	6	
Jackal BB	0	0	2	0	
Kudu	196	225	368	6	
Lechwe	175	65	0	0	
Leopard	0	3	1	0	
Lion	0	2	12	0	
Ostrich	0	7	21	0	
Reedbuck	30	12	4	0	
Roan	1	28	150	0	
Sable	39	331	148	0	
Steenbok	1	12	33	0	
Tsessebe	21	3	27	0	
V. Monkey	30	31	0	0	
Warthog	80	42	119	10	
Wild dog	20	0	0	0	
Wilbeest	8	27	350	0	
Zebra	533	156	269	809	

Numbers seen - 2011 vs 2010

Species	Animals		Groups	
	2010	2011	2010	2011
Baboon	188	162	9	6
Buffalo	1194	1828	36	44
Bushbuck	7	13	5	8
Bushpig	0	0	0	0
Crocodile	5	2	5	2
Duiker	232	277	213	252
Eland	3	44	1	6
Elephant	2363	2649	200	222
Giraffe	51	124	23	31
Hippo	62	26	10	8
Hyaena	3	4	3	3
Impala	1311	1401	118	120
Jackal BB	9	2	5	1
Kudu	807	795	169	176
Lechwe	262	240	32	23
Leopard	0	4	0	4
Lion	2	14	1	7
Ostrich	5	28	3	7
Reedbuck	56	46	17	15
Roan	239	179	55	31
Sable	338	518	53	58
Steenbok	68	46	57	41
Tsessebe	33	51	13	8
V. Monkey	34	61	5	4
Warthog	282	251	119	104
Wild dog	0	20	0	1
Wilbeest	194	386	22	20
Zebra	743	1781	46	59

Trends – Numbers per 100km



Trends were calculated using both dry season and wet season counts for years prior to 2007, and only dry season counts were used from 2007 onwards. Great care should be taken when interpreting the charts prior to, and after 2007 as, in addition to the count season changing, the number of transects increased and their spatial distribution expanded at this time.